

Grindings

Idaho Gem Club, Inc.

P.O. Box 8443 Boise, Idaho 83707-2443

VOL 78 NO 5

MAY 2018



PRESIDENT'S MESSAGE

DIRECTORY

ITEM	PAGE
ALAA	15
ARTICLES	9,10
AFMS	13
BENCH TIPS	12
BIRTHDAYS	11
CALENDAR	6
FIELD TRIPS	8,9,10
OTHER	19
JUNIORS	5
MINUTES, Board	2,3
MINUTES, General	4
NEW MEMBERS	9
NFMS News	13
NFMS Shows	14
NOTICES	7
OFFICERS	2
PRESIDENT'S MESSAGE	1
REFRESHMENT	7
SCHOLARSHIP	16-18
SUNSHINE REPORT	7
WORKSHOP	6

Our rockhounding season is in full swing. I hope everyone has been having a great time getting out for some collecting. The last two field trips were very successful and well attended. The trip to Beacon Hill is becoming quite popular. There were folks from four different clubs, including ours. It's good to see the excitement we all have to visit the popular collection areas. Our next trip is going to be an overnigher to the Sunstone claim in Oregon. Check further in this newsletter for details. It is another popular area for us to visit.

I would like to thank Diane and Chuck Frederick for their generous donation of material from Peggy Dean's estate. She wanted us to use it for club activities. You will be seeing great material in door prizes, as well as the July and August auctions in the park. Deana has graciously agreed to help with sorting and bagging.

Janelle Wintersteen, our Juniors leader, is requesting that folks bring in some crystals to show the juniors for the June program. Please do not bring in your dearest pieces that may get damaged. If you have some crystals to donate to the kids, that would be great, but Janelle is mostly looking for things to show the different crystal forms that can be found in our general area (within about 100 miles or so).

Ed Moser has a display case set up at the Nampa Public Library, 3rd floor. It includes jewelry, dinosaur bones, and other specimens. They are really enjoying it. The library is interested in having a workshop for the kids on area geology. Please contact Ed if you would be interested in participating in an educational endeavor.

Also, remember that Marge will be having a wire wrapping class on Thursday, June 14th from 6 to 8:45 pm. The general workshop will be on the next Thursday, after the general meeting, and the Kid's Workshop will be on June 23 from 10 am to 2 pm. Please call Brent at 208-863-9336, or Stewart's Rock Shop at 208-342-1151 to reserve your spot.

I hope to see you all at the next general meeting.

Respectfully submitted, Dana Robinson, President

BOARD OF DIRECTORS

PRESIDENT: Dana Robinson
208-345-3823, 208-713-8582
drobinso@boisestate.edu

1st VP: Willa Renken
208-362-3941
wlr_dkr@msn.com

2nd VP: Deana Ashton
208-794-5628
gemdigger2014@outlook.com

SECRETARY: Christine Anderton
208-703-0740
cah.cuepoc@live.com

TREASURER: Rochelle Eytchison
208-343-4302
dawgkatz@aol.com

NFMS DIRECTOR/GRINDINGS
EDITOR: Linda Barlow
208-724-3309
barlow596@gmail.com

BOARD MEMBERS:
Cullen Anderson, 208-412-6822
cullenanderson@hotmail.com

Cheryl Peterson, 208-991-6631
cpete4421@gmail.com

Brent Stewart, 208-863-9336
gene@stewartsgemshopinc.com

Ed Moser, 208-340-8060
ed.moser15@gmail.com

Twila Gallaher, 208-853-6703
tkgboise@cableone.net

Sandy Blodgett, 208-859-4080
(Historian)

Librarian: Christy Powers

CLUB WEBSITE:
www.idahogemclub.com

MINUTES OF THE IDAHO GEM CLUB
BOARD MEETING
June 5th, 2018

Meeting called to order at 7:32 p.m.

Present: Willa Renken, Deana Ashton, Dana Robinson, Cheryl Peterson, Brent Stewart, Twila Gallaher, Sandy Blodgett, Ed Moser, Rochelle Eytchison, and Linda Barlow.

Absent: Cullen Anderson, Christine Anderton,

Guests: Cheryl Link, Duane Winterroth, Janelle Wintersteen, Deanna Moser.

Minutes Corrections: None as printed in Grindings. Willa motioned to accept the minutes. Deana seconded. Motion approved.

Secretary Report: None.

Treasurer Report by Rochelle Eytchison: Monthly financial statements provided. Not much changed in the last month. Sandy had a question about the report from a previous meeting on where an influx of money had come from. BLM requires us to keep money in an account for two of our claims for which we have a plan of operation. The Sunstone claim requires \$1500 and the Beacon Hill claim is \$1000. This is to be used in the event we walk away from the claims and reclamation is needed. The Wells Fargo account was set up by Ron Coolbaugh as a CD which matures and rolls over to the next period. She is not sure how much interest is being made on the account. We will leave it as it is for now.

Federation Director Report by Linda Barlow:

-AFMS Conservation & Legislation Committee is looking for 7 people to represent rockhounds with a passion and desire to preserve Recreational Rockhounding as a functional activity on our public lands.

-AFMS President's message is to remind everyone to maintain the ethics of the NFMS and AFMS as rockhounds.

-NFMS is also asking all clubs to submit a nominee for Rockhound of the Year. To nominate someone, submit a short paragraph about the member you think should be recognized as a Rockhound of the Year. If we nominate one member a month we can pick one from that group to enter for next year. Linda will accept these nominations.

-Safety was also discussed and various reasons people give for not using safety equipment, cost, time to implement, nobody is watching, etc. Most safety equipment like goggles are very inexpensive and much less than a hospital visit for an eye injury. Everyone is encouraged to think about safety in all of their activities.

-AFMS History of Earth Sciences programs.

-AFMS All American Club Award and E-Yearbook information reviewed.

-The BLM is starting a project to remove junipers from the sage grouse areas to promote sagebrush growth. Sage grouse move out of an area with too much juniper.

-There are also road closures in the area around Lowman to remove tree hazards from the Pine fire. See NFMS/AFMS reports (page 13-14)

-Websites available in Grindings for Boise National Forest & all forest

closures and motor vehicle use route maps.

Program Report by Deana Ashton: Chris Dail expressed the desire to return this month and give his program. Dana will touch base with him to see if it is still on. Deana asked Cheryl Link & she agreed to show sunstone information as a backup.

Juniors Report by Janelle Wintersteen: She will be discussing crystal forms this month. Please ask members to bring in crystals to show forms from our area. She also discussed the Crystals book that Linda brought back from the NFMS show and wants to encourage juniors to purchase one for home. The Board also discussed subscriptions for Mini-Monthly Miner by Darryl Powel as presented at NFMS. Brent has done programs for 6 different schools in just one month. Attendance ranged from 78 to over 3,700. AFMS FRA (Future Rockhounds of America) Badges are also available from the AFMS for youth activities. See the NFMS newsletter for more information.

Field Trip Report: Cullen was not at the meeting.

-Willa filled us in on the trip to Beacon Hill. There were 34 vehicles that were led in representing members from the Boise club, Caldwell club, Weiser club, Mtn. Home club, and a few from Twin Falls. Everyone had lots of luck and found good material. We also discussed work that is needed (excavating) on the claim next year. Willa will schedule that for next spring.

-Linda Barlow reported on Succor Creek trip where she found 2 large limb casts. It was also well attended and some folks went way back and found some beautiful Thunderegg and Geodes.

-The next field trip will be to the Sunstone Claim near Plush and Lakeview, OR. Cheryl Link will be leaving on Saturday from the Caldwell Flying J truck stop. It is a long trip, 7 hours one way, so she will be staying until Monday. Linda will be going out on Thursday. It is in a public area so we can camp there and there is an outhouse. Sandy advised that you take spare tires, preferably 10-ply, as the road is very rocky. (see notice from Cheryl Link, page 8)

-Dana described the material that was donated by Diane and Chuck Frederick from Peggy Dean's estate. There is a lot of tumbling material, as well as slabs for the building fund to raffle and material for auctions and door prizes. Deana has agreed to help sort.

New Membership Applications: Reviewed early to allow Rochelle to leave a bit early. 12 applications were reviewed. Willa motioned to accept. Ed seconded. Motion passed.

Workshop Report by Brent Stewart: There will be a wire-wrapping class with Marge Conley on Thursday, June 14th from 6-8:45 p.m. The general workshop will be the Thursday after the general meeting, June 21st from 6-8:45 p.m. The Kid's Workshop will be on Saturday, June 23rd from 10 a.m.-2 p.m. Please call Brent at 208-863-9336 or the shop at 208-342-1151 to RSVP. The next general workshop will be on Saturday, June 30th from 10am-2pm.

Historian Report by Sandy Blodgett: He received meeting minutes from 1936-1939 from Brent Stewart. Sandy and Dana are still trying to get hold of Tina Frederick to transfer the historian materials to Sandy.

Old Business: Dana asked if we need to order another new trailer at this time. Willa suggested waiting until we have a better idea of what table rent will cost so we know how many tables we will need to store. The matter was tabled until we have more information.

New Business:

-Duane Winterroth has been in contact with a company to make us embroidered patches that we can put on hats, shirts, vests, or whatever anyone wants. The two sizes would be 3" and 3 1/2". The prices quoted were \$4.50 for 50 patches or \$3.75 for 100. The board has asked for the price at the next quantity break, which is 500. Linda also asked about the price for a 12" version for a vest to use at NFMS events and meetings. Duane will get a price quote for that size as well. We will make a decision at the next board meeting when he has the new figures.

-Sandy had questions about why dedicated funds had been merged into one for a CD. It was set up by Ron Coolbaugh to maximize interest earnings at the time. He would like the monies generated by the building fund to be shown separately on the Expense Report.

-Sandy had questions about voting on club bills that are paid. If the bill exceeds the budget, then we vote on it.

-Sandy asked about presenting each new member with a copy of the bylaws and articles of incorporation. It seems cost prohibitive to hand out paper copies when it can be accessed on the web site.

Meeting adjourned at 9:30 pm.

Respectfully submitted Dana Robinson, President

**MINUTES OF THE IDAHO GEM CLUB
GENERAL MEETING
May 15th, 2018**

Meeting called to order at 7:30 p.m.

Pledge of Allegiance was led by Dana Robinson.

Several guests introduced themselves, including three members from Midas Gold.

DOOR PRIZES: Rick Corbett drew for juniors and several adult door prizes. The door prizes for tonight were donated by the Midas Gold guests.

BUILDING FUND: Raffle done by Duane Winterroth drew 7 winners. The slabs for the building fund raffle were also donated by Midas Gold.

MINUTE CORRECTIONS: None as printed in the Grindings. Willa motioned to accept. Howard seconded. Motion carried.

SECRETARY REPORT: None. Secretary absent. Deana Ashton graciously took minutes.

TREASURER REPORT: None. Treasurer absent. tonight.

JUNIOR: excused to program on Dinosaurs.

FEDERATION REPORT by Federation Director, Linda Barlow:

Placed new NFMS directory in the library, 2017-2018

Reported on a monthly newsletter by Diamond Dan for the Juniors.

Reviewed a book on Crystal Forms donated by Darryl Powell (Diamond Dan) at NFMS Annual Meeting that is great for juniors, very informative.

Our newsletter, Grindings, took 1st Place in the NFMS competition.

Phil Neuhooff was presented with his 1st Place Award from NFMS competition for advanced article he wrote on black lights.

At the NFMS Annual Meeting, the display case winner was a 13-year-old who made 98 out of 100 points on a perfect case plus three other awards in competition against the adults. Well done! It shows how juniors can be successful in the cases they create.

REFRESHMENT COMMITTEE: No Updates.

FIELD TRIP REPORT by Cullen Anderson: Field Trip Report:

Cullen announced the trip to Succor Creek, meeting at 8 am at the Gem Stop, leaving at 8:30 am.

The field trip to Beacon Hill was also announced and

will be on June 2 and 3. The meeting place for Beacon Hill will be the rest stop off I84 just over the Oregon border at 8 am, leaving at 8:30 am.

Since the Beacon Hill trip was changed, the Sunstone claim was substituted for June.

LIBRARY REPORT: Our new librarian, Christy Powers, is not present tonight, however the Library is open for check outs and returns.

WORKSHOP REPORT by Brent Stewart: He reviewed the upcoming workshops and the wire wrapping class for June. The dates for the future wire wrapping classes are listed in the Grindings (page 6). Kent Owings is also interested in giving wire wrapping classes, as well.

OLD BUSINESS: Willa let us know that the trailer has been ordered and is in process. She also went over the successful Night at the Museum at the Boise Valley Adventist School. Brent Stewart, Cheryl Lind, Howard Roos, and Willa Renken put up 7 black light cases in a darkened hallway. It was the highlight of the event. They also gave the club a donation for our help.

PROGRAM: The equipment for the evening's program by Chris Dail from Midas Gold was not cooperating. He will come back next month to do the presentation. The alternate was a video segment from Treasures of the Earth describing how metals shape our world. It did run longer than expected since it got started late.

ADJOURNMENT: at 9:15 p.m.

Respectful submitted, Dana Robinson, President



ROCKY RATTLER'S PAGE

By
JANELLE WINTERSTEEN

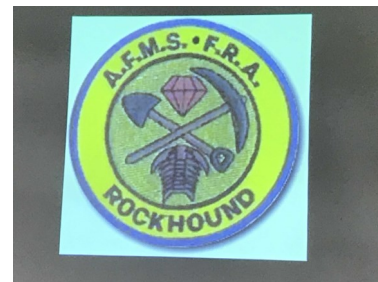
Crystals are the subject for the Rocky Rattlers in June. I have books and rocks and sometime we will get media set up so the juniors can see film footage. But having rocks in the kids' hands is still the most important.

If any of the adults reading this have crystals they would like to bring in and show, feel free. I ask that no one bring in anything extraordinarily valuable. Crystals from the intermountain west are the best. My in-laws gave me two huge quartz crystals from a Korean trip I will go ahead and bring, along with calcite crystals and small quartz spars Jim Story gave me several years ago. Coyote and Dana have brought me stuff.

We will talk about the differences between crystal formation and the gems that give this state its name.



**KIDS
WORK-
SHOP!**
Come Join
the Fun:
June 23rd
10am-2pm



IDAHO MUSEUM OF MINING & GEOLOGY EVENTS

If you love rocks, minerals and Idaho mining history, you'll dig the Idaho Museum of Mining and Geology. We're seeking enthusiastic and friendly volunteers to help with tasks at the museum.

SPRING EVENTS:

June 30: International Asteroid Day
Comets, asteroids, & Meteoroids

Sept. 16: Rock Party 12-4:30 pm *A celebration of Idaho's mining & geologic history w/activities for children & adults. Shirley Ewing 208-283-3186*

FIELD TRIPS:

June 16: Gold Panning,
(Idaho Gold Prospectors Association)

COMMUNITY PROGRAMS By Brent Stewart

5/4/18: Star Elementary School: 3rd grade, 100 attendance

5/10/18: Lewiston School District Rendezvous:
4th grade, 415 attendance

5/18/18: Meridian School District Rendezvous:
4th grade, 3700 attendance

5/21/18: Prospect Elementary School:
1st grade, 135 attendance

5/22/18: Reed Elementary School (Kuna):
4th grade, 78 attendance

5/23/18: Riverside Elementary School (Boise):
3rd grade, 100 attendance

IDAHO GEM CLUB (IGC) CALENDAR

June 14: Wire Wrapping class
 June 17: Father's Day
 June 19: General Meeting
 June 21: General Workshop
 June 21: Summer Solstice
 June 23: Jr. Workshop
 June 23-25: Sunstone
 Field Trip
 June 30: General Workshop
 July 03: Board Meeting
 July 04: Independence Day
 July 17: General Meeting, Picnic, Auction



YESTERYEAR BY SANDY BLODGETT HISTORIAN

MOTIONS STILL IN FORCE

Mar. 3, 1987: Allow other organizations to use our tables for a donations of \$2.50 per table per day with a Guarantee to return all tables in good condition & to pay any repair cost needed due to any damage incurred.

Apr. 21, 1987: Insurance be put on the club's material in storage.

Feb. 2, 1988: Non-members may enter competitively in our shows.

June 21, 1988: The proposal of the Junior club to become affiliated with the Idaho Gem Club, Inc. be accepted.

May 2, 1988: A building fund account be set up.

June 7, 1989: A tape recorder be purchased for club use.

Jan. 7, 1992: Form a committee in charge of the Holiday Relief Station (Black Creek Rest Stop).

Feb. 4, 1992: Names of all new members be published in the "Grindings".

WORKSHOP SCHEDULE By Brent Stewart

THURSDAY after General Meeting (usually 3rd Thursday),
 June 21: 6pm-8:45pm
 SAT./SUN. (Saturday/Sunday after General Meeting):
 June 23: Juniors Workshop, 10-2pm
 Reserve w/Brent Stewart (208-863-9336)
 Or Stewart's Shop# (208-242-1151)
 6/30: General Workshop 10am-2pm

WIRE WRAPPING CLASSES:

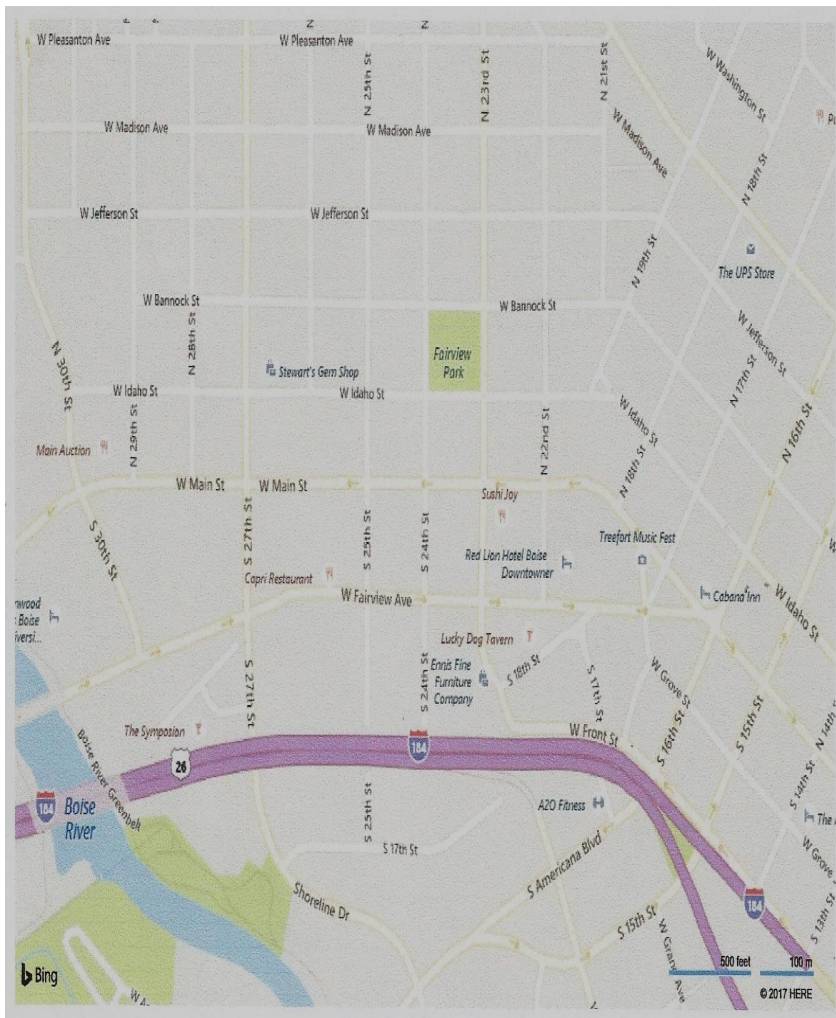
Copper & Brass wire: free, silver & gold: \$10/class

June: Thur., June 14, 6:00-8:45pm

July: Thur., July 26, 6:30-8:30pm

Aug: Thur., Aug. 16, 6:30-8:30pm

ADDRESS: 2620 W. Idaho St., Boise, Idaho
 Next door to Stewart's Gem Shop



2ND VICE PRESIDENT MESSAGE

SUNSHINE LADY REPORT

Please let me know if you are aware of any of our members having surgery, an illness, or just in need of cheer. We all can use some good cheer! We try and keep in touch with all our members, and I apologize if we have overlooked any member who has lost a loved one. Please let us know if we can help in any way. Contact Deana Ashton at 208-794-5628 or any Idaho Gem Club Board Member/officer.

IF YOU WOULD LIKE TO ATTEND ANY GEM CLUB FUNCTIONS BUT ARE UNABLE TO DRIVE, CALL ME! WE WILL DO OUR BEST TO GET YOU THERE!

If you know of any members in need of cheer or to request flowers be sent, and to inform us of illnesses and those who have passed on, please contact Deana Ashton at [208-794-5628](tel:208-794-5628).

MARCH 2018 SUNSHINE REPORT

Our Hearts are with the family of Marian Phillips who now hunts rocks in heaven. Thanks to her family for donating her stone beads to the Book Nook Sale of the Garden City Library on June 7-9. We are unable to provide our readers with information on Marian d/t Legacy.com website being unable to process our request.

NOTICES

Timberline Rockhound Club will want to sell two 10 inch slab saws (used) and two electric motors. The equipment is surplus and the prices will be on the low end of reasonable. The equipment will be brought to the show or I can be contacted at 208.345.1997. Greg Sandmeyer

REFRESHMENT COMMITTEE GUIDELINES

We encourage member participation in bringing cookies snacks and beverages to share during break at general meetings. Total provision among members assigned to bring refreshments is for 8 dozen cookies or snacks and drinks/ juice. That can be veggie trays, breads, any other treats.

*We ask for **10 adult and 10 youth door prizes** which are wrapped in a bag. Usually minerals or rocks or slabs. Club provides coffee service and paper plates napkins and cups.*

The basic duties of refreshment committee includes chair set up, cleanup and take down. Please come early and remain late to assist with these.

Please contact **Deana Ashton, 208-794-5628**, and let her know if and what you will be bringing for the current month so she can coordinate and be sure enough is provided for snack, beverage, and **door prizes**. Some could bring food, some could bring beverages, some could bring door prizes. Thanks for your participation.

Members whose last name begins with letter listed below, are asked to bring after meeting snacks and door prizes for the month indicated.

JANUARY _____ BANQUET
 FEBRUARY _____ --A-D
 MARCH _____ --E-K
 APRIL _____ --L-R
 MAY _____ --S-Z
 JUNE _____ --A-D
 JULY _____ PICNIC: A-K*
 AUGUST _____ PICNIC: L-Z*
 SEPTEMBER _____ --E-K
 OCTOBER _____ --L-R
 NOVEMBER _____ --S-Z
 DECEMBER _____ HOLIDAY COOKIES
 BY ALL

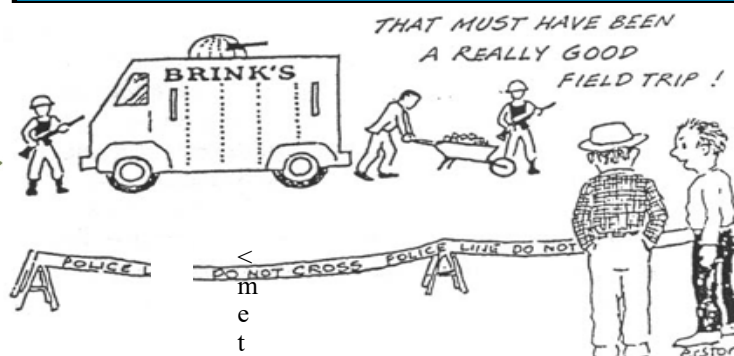
Idaho Gem Club Member Field Trips

**June 23-25: Oregon Sunstone
Claim, Plush, OR.
(overnighter) trip
Contact Cheryl Link for info 208-375-5360
clink@micron.com
See page 9& 10 for sunstone info,
directions, and map**

**July 21: Reynolds Creek
Aug 25: Dismal Swamp
Sept. 22: Hog Creek
October 20: Haystack Butte
(possible joint with Owyhee Club)
ALTERNATE TRIPS: Squaw Butte**



FIELD TRIP REPORTS



Cartoon by Erston Barnhart
From Rockbuster News 2/99
via T-Town Rockhound 6/99

Kristin Hissner's find
at Beacon Hill.

Howard Roose's find
At Beacon Hill.

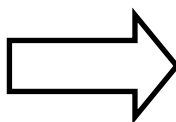
FIELD TRIP SUPPLIES

Rock Hammer
Chisel, Pick, Pry Bar
Shovels
Buckets or
Collecting Sacks
Screening Box
Map or GPS

Water
Sunscreen and a Hat
Knee Pads
Gloves
Safety Glasses
First Aid Kit

Good boots or hiking shoes
Rain Coat (Dress in Layers for Cooler Mornings)
Lunch/Dinner/Snack Foods /Camping supplies
(Depending on Length of Trip)

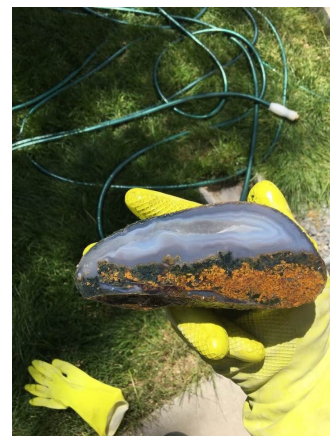
BEACON HILL FIELD TRIP TO RIGHT.



SUCCOR CREEK FIELD TRIP BELOW.



Limb Casts were first find of
the day. by Linda Barlow.
Lots of Thundereggs and Ge-
odes also found.



PICTURES COURTESY OF TODD JACKSON



OREGON SUNSTONE FIELD TRIP INFORMATION

WHAT ARE OREGON SUNSTONES?

Sunstones are feldspar crystals that formed in lava 13-14 million years ago, a volcano in Steens Mountain erupted, pouring out massive amounts of lava. The lava flow was subsequently covered by a vast lake & remained underwater for thousands of years. As the lake gradually dried up, the exposure to weather caused the lava to decompose & reveal loose sunstones.

KNOW BEFORE YOU GO

The boundaries of the Oregon Sunstone Public Collection Area are marked by orange plastic posts that say "Oregon Sunstone Public Collection Area" (OSPCA) & corners are marked w/large BLM triangles on wooden posts.

Due to the isolated location, rock hounds visiting the collection area should be well prepared. The only facilities available at the site are a portable toilet, picnic tables, & a shade structure. You are welcome to camp anywhere within the Oregon Sunstone Public Collection Area. There is no fee for collecting sunstones, but you may not collect sunstones for trade or commercial purposes.

PRIVATE MINING CLAIMS

Within the OSPCA is a 20-acre parcel of private mining claims. Private mining claims are also located outside & adjacent to the Oregon Sunstone Public Collection Area. You will need a member of Idaho Gem Club to guide you to our claim. This is the first one I've known or attended since becoming a member. Suggest you take advantage of this trip!

Large mechanized mining claim operations are visible near the entrance to the OSPCA. Mining on these claims is regulated through Federal & State permits. These claims are restored at the end of mining operations. No public collection is allowed within these private mining claims.

COLLECTING

As you walk within the OSPCA, keep your eyes to the ground & look for the opaque yellowish stones, picking them out of the soil & rocks. Sunstones can be red or green, but pale yellow is the most common color. Hand tools such as shovels & picks may be used for digging, but please fill in any holes you create. Mechanized equipment for digging is strictly prohibited.

FLORA & FAUNA

Although the OSPCA may seem somewhat desolate, it is always possible to observe desert animals. During daylight hours, black-tailed jackrabbits, cottontail rabbits, short-horned lizards, sagebrush lizards, & the western skink may be seen. Nighthawks may be observed catching insects in the evening, & coyotes heard howling at night. While sagebrush is the most common plant, native grasses such as Indian rice grass & Needle & Thread grow in the area.

DIRECTIONS TO THE SITE

For southbound travelers on Highway 395: From Hwy 395, turn left (east) onto Country Road 3-10 (the Hogback Road). Stay on the Hogback Road for 20.2 miles until you can turn left on County Road 3-11. Drive 1/2 mile & turn left onto BLM Road 6155. Remain on the 6155 road for about 8 1/4 miles then turn left onto BLM road 6115. Follow the 6115 road for about 5 miles until you can turn right onto BLM Road 6195 & the entrance sign for the Sunstone Collection Area.

CAUTION: BLM roads are unpaved & impassable in wet conditions even with a 4-wheel drive vehicle. If you are planning a visit NOV thru May, contact BLM Lakeview District Office for info on weather & road conditions.

The nearest services are located in Plush, Oregon, approx. 23 miles south. Services include gas & grocers at the store & picnic tables, water, & toilets at Egan Park.

www.blm.gov/or/districts/lakeview
From BLM/OR/WA/GI-12/033+1122.32

Welcome New Members

ADULT:

1. Natalie Banes, Boise
2. Irina & Robert Barrett, Boise
3. Sasha Barrett, Boise
4. Rich Benedict, Boise
5. Carole & Mack Bingham, Meridian
6. Setsuko & Arthur Church, Weiser
7. Carolyn & Robert Ingersoll, Melba
8. Maria Carruthers & Trevor Steed, Eagle
9. Gigi Stephens & Jason Smith, Boise

JUNIOR RATTLES:

1. Claire Barrett, Boise
2. Eddie Barrett, Boise

June Field Trips: (Geodes & Sunstones)

This month the club will have two field trips.

The first one was on June 2 & 3 to the club's claim called "Beacon Hill" for geodes. I heard it was well attended by 5 different Idaho Rock Clubs! There were 36 vehicles. We hope you had a great time and collected lots of nice material. We only go there two times a year because we have to travel over private land to get to the claim. We have established a good rapport with the land owners and want to keep it that way. If you want to attend one of our field trips, please let us know so we can make sure you tag up with the group.

The second field trip will be the weekend of June 23 & 24. This will be to the club's claim called Faceteer 1, 2, & 3 for Sunstones. Sunstones are the Oregon State Gem Stone. This trip is out of town located near the city of Plush, Oregon. The travel time one way is roughly 7.5 hours. Yes, seven and a half hours one way. The club has had these claims for nearly thirty years.

Because this will be a long drive, I am asking you to confirm your attendance with me so I can plan my vacation time at work accordingly. If those who can attend can leave before Friday, I hear a couple are leaving Thursday due to the long drive time. If there are many who want to go over Friday and none who want to go over Saturday, then I will ask for Friday off at work and take everyone over on Friday. If no one can leave early on Friday and many want to go over on Saturday, then I will ask for Monday and Tuesday off so we can stay longer once we get there. If you are confused by this - please text me 208-859-5098 and I will try to clarify. **A reminder for those who are not Idaho Gem Club Members and are reading this, you are allowed access to this claim only while attending an Official Idaho Gem Club field trip!**

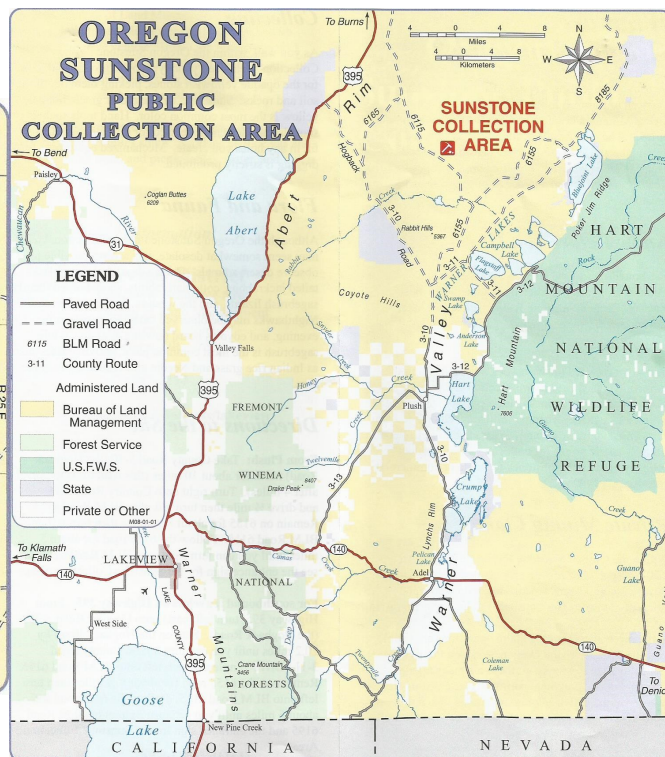
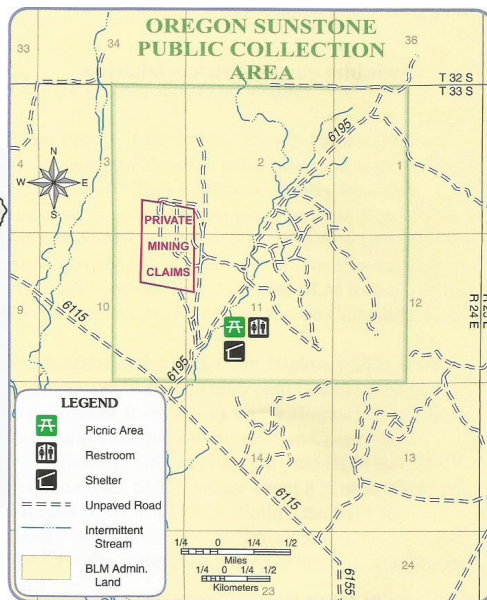
There is one pit that we currently dig in. This is done by hand tools only. NO motorized equipment is allowed ever! Our plan of operation specifies this. **Do not violate this!**

Tools to take with you: Rock hammer, gad bar, chisel, shovel, bucket, classification screens ($\frac{1}{4}$ and $\frac{1}{2}$ inch size), rock pick, small bush, collecting bag or bottle, hat, gloves, sun protection cream, tick spray and any personal comfort items. The closest real store is in Lakeview which is 60 miles away. Plush has just the basics needs like water, beer, ice cream and gas. *After basting in that hot high desert sun you will think of ice cream as a basic need believe me.* I will have more details at the club meeting Tuesday June 19th.

What type of material can be found on this claim? Clear, pink and red sunstones. I don't want to mislead you as a high percentage of the stones are clear so when you find a pink or red and it is not blood from a cut of your finger, you have usually found a nice stone that can be faceted. How do we find this material? Use a rock hammer and chisel and bang on the lava rock/basalt to break up the rock and hopefully find a pocket of sunstones hiding within.

Where will we meet to make this journey? That depends on which days most people who will make the commitment to make the trip over. There has been a discussion to meet at the Flying J Truck Stop along the right-hand side of the freeway heading west near Caldwell while others think it would be best to meet at the truck stop on the right-hand side just before you leave Burns. I might do both.

I don't normally give out my personal email address but for this trip I think its the only best option. clink.5.link@gmail.com Email me if you are going on this field trip so I can plan my vacation time off. Best regards, Cheryl Link



**JUNE**

06/03 Keith Powers
 06/03 Debbie Taylor
 06/05 Charles Dringale
 06/06 Keelyn Legg
 06/06 Xaria Legg
 06/07 Dianne McCoy
 06/08 Beverly Hopkins
 06/09 Liane Kerting
 Vick
 06/10 Bianka
 Hendershot
 06/11 Dan Escobar
 06/11 Patricia Osgood
 06/13 Mike Geokan
 06/15 Sarah Neuhoﬀ
 06/16 Nancy Baker
 Haviland
 06/16 Chris Blickfeldt
 06/16 Orion Sorensen
 06/17 Cullen Anderson
 06/17 Natasha
 Anderson
 06/17 Sandy Blodgett
 06/17 Dorota Siejek
 Hendershot
 06/19 Norm Cover
 06/21 Cheryl Peterson
 06/24 Meredith Russell
 06/29 Carl Fuller
 06/30 Jonathan
 Barnett

FACETED:

Alexandrite

CABOCHON:

Moonstone

TRADITIONAL:

Pearl

JULY

07/09 Sierra Sandoval
 07/11 Tim Koah
 07/12 Steve Fogdall
 07/12 Loren Francis
 07/14 Irina Barrett
 07/14 Stella Russell
 07/14 Jason Strid
 07/20 Patsy ethel
 07/21 Ann Stewart
 07/22 Tom Rogers
 07/25 Michael Corbett
 07/25 Jerry Ricksecker
 07/26 Steve Lauritzen
 07/26 Larry Ridley
 07/28 Henry Strid
 07/28 Philena
 Thompson
 07/29 Catherine
 Parsons
 07/30 Debbie Housh

FACETED:

Ruby

CABOCHON:

Carnelian



Land Management Officer Shoots Woman Off-Roading in Berdoo Canyon

An officer with BLM or the [Bureau of Land Management](#) officer shot a woman who was off roading on Berdoo Canyon off of Dillon Road. Riverside County Sheriff's investigators responded Sunday at 11 p.m. but were in the remote canyon most of the day Mon. "The preliminary investigation revealed at this time that the Bureau of Land Management officers responded to assist the Joshua Tree National Park Service ranger ... with an illegal off roading failure to yield investigation," said RSO Investigator Armado Muñoz. He says they were trying to get the off roaders to stop, "A Bureau of Land Management officer attempted to stop the off road vehicle and an officer involved shooting occurred at that time," he said that adding the female hurt was a passenger, "adult female that was in the off road vehicle was injured as a result of the shooting and transported to a local hospital for treatment of the non life threatening injuries that she suffered and a male adult was also detained at the scene."

A friend of the victim who did not want to be identified tells KMIR the couple was riding a side by side off road vehicle and the woman shot is a nurse and would never threaten an officer.

Muñoz says armed officers patrol the federal lands and it's important before you go off roading to know where you're going, "Before you go out and use those vehicles to make sure that you are driving them in a place where it's allowed ... sometimes people go out and assume that it's okay so we just encourage you to do some homework." Muñoz says the officer is on administrative leave until the investigation is complete.

We reached out to the [Bureau of Land Management](#) who deferred us to RSO who is charged with investigating this shooting but did send us helpful links to off-roading and maps.

[Tread Lightly](#), [ROHVA](#), [Riverside County Sheriff's Off Road Maps](#)



Bench Tips

See all Brad's jewelry books
at Amazon.com/author/bradfordsmith
www.BradSmithJewelry.com

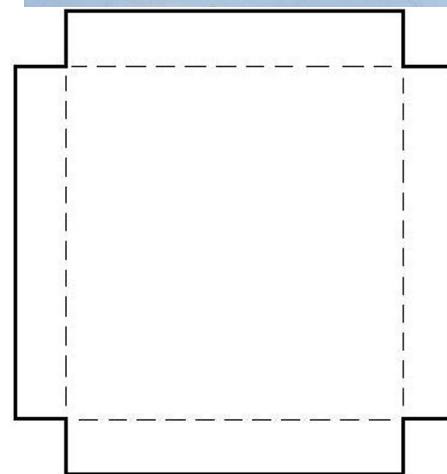
REVOLVING SOLDER PAD

Often when we're soldering we have multiple pieces on the pad or a single piece and would like to work on several sides of it during the same heat.

One of the ways to deal with this is to put your solder pad onto a turntable. That way you can rotate each piece into position when you need to or can rotate the pad to reach another side of a larger piece.

All you need to make one of these is a piece of aluminum sheet and an inexpensive turn table assembly. A good hardware store will have both, although you can usually find the aluminum in the scrap pile of a local sheet metal shop.

To build a turntable for my 6 inch solder pad, I used a seven inch square piece of aluminum sheet and cut out 1/2 inch notches from each corner. Then I used a bench vice to bend the sides along the dotted lines to form a tray that cradles the solder pad. I attached the tray to the turntable assembly with a couple small flat-head machine screws and nuts.



QUENCHING

Do you hear that little hiss when some jewelers drop a hot piece from soldering directly into the pickle? That hiss sends small droplets of acid into the air that can rust nearby tools and can't be all that good to breathe. To avoid this, I keep a coffee cup of water at the solder station to cool a soldered piece before dumping it into the pickle. It's also useful for annealing metals and for cooling off tweezers

Members, Non-members, clubs, etc. can advertise in the Grindings Newsletter. This service is provided to help defray the cost of printing and mailing the newsletter and is encouraged by the NFMS. The only criteria for the ad is that it be hobby related (e.g. rocks, equipment, grit, shows, etc.).

2" x 4" (business card size): Non-members \$15,
Member notices are \$5.

4" X 6" AD (1/4 page): Non-members \$30,
Members \$10 Payable to Idaho Gem Club.
Give monies to Treasurer & AD to Editor

THE GRINDINGS

is the monthly newsletter of the Idaho Gem Club, Inc., associated with the Northwest Federation of Mineralogical Societies. Permission to copy is freely granted when proper credit is given to both the publication and the author. Articles without bylines are written by the Editor or President.



AFMS NEWS

AFMS CONSERVATION & LEGISLATION

COMMITTEE CHAIR (John Martin): Looking for 7-10 pro-active Rockhounds within AFMS who have the desire and passion to be part of a committee that will be trying to preserve Recreational Rockhounding as a functional activity on your public lands. (USA is 3.8 Million Sq. Miles in size with 2.28 Million Sq. Miles of "Public Lands" owned by the taxpayers of the US & managed by various agencies of our Federal Government for & on behalf of the Citizens of the US. Including Military Installations, National Monuments, National Forests, & National Parks.)

AFMS PRESIDENT MESSAGE (Sandy Fuller): With 7 federations and 54,500 members, she encourages us to be reflective of our AFMS Code of Ethics while visiting collecting sites. As club members, we are ambassadors and need to be vigilant in identifying those who flaunt our ethics & take appropriate actions to limit the damage they inflict on all of us.

AFMS ROCKHOUND OF THE YEAR CHAIR (Judi Allison): Give a round of applause to those hard working, yet quiet, folks who have gone out of their way to do something above & beyond for your club this year. Submit a paragraph honoring this person during this year. Your Editor's suggestion is that we have monthly submissions and the Board chooses one of the 12 (6 months left now) for this honor and then submit to NFMS Rockhound of the Year Chairperson.

SAFETY MATTERS: THE PRICE OF SAFETY AFMS Safety Chair (Ellery Borow): Why are more people not striving toward being safe with our hobby? **ANSWERS:** Cost! Time! Distracting! Better idea! No one watching! I'm lucky! Safety is an attitude, an attention to detail, & a certain modicum of creativity.

-COST: \$900 ER visit or \$3 goggles?

-TIME: 3 seconds to lower & secure hood of slab saw? 4 seconds to adjust safety goggles? 9 seconds to walk over & turn on ventilations fan for soldering torch fume exhaust hood?

-DISTRACTION: Misfitting gloves? Goggles restrict vision

-IDEAS: Tool, equipment, & hobby supply instructions well thought by experts in area.

-WATCHING: If not safe for yourself, be safe for the special people in your life – children, brothers, sisters, husband, wife, significant other, parents, neighbors, friends, 4-footed friend

-LUCKY: Injury odds are always 50/50!

HISTORIAN by Jennifer Haley: She discusses programs in the early days to today including history of the AFMS Future Rockhounds of America (FRA) program for our youth, how to gain earth science information – our local club libraries, outreach programs to schools and museums, & visiting other clubs.

SAVING HISTORY – THE E-YEARBOOK by Mark Nelson, Bulletin Editors Advisory Committee Chair: The All American Club Award is given to the individual club Yearbook, highlighting a club's activities for the past year, including group activities, individual member participation, workshops, & shows. Credit is given for attendance at regional & national shows, participation in competitive displays & at meetings, holding officer positions on various committees, Junior activities, club members volunteering as Judges for AFMS contests, writing to state representatives & involvement in ALAA. This is not a competition between clubs, it is a competition of each club against a "national standard".

NFMS NEWS (LOCAL)

May 31, 2018: US Dept. of Interior's Bureau of Land Management signed Record of Decision for the Bruneau-Owyhee Sage-Grouse Habitat Project. Decision authorizes removal of encroaching western juniper on 617,000 Acres in 1.67mil-acre area in Owyhee County. "Junipers are such significant invasive plants that even small amounts of them cause Sage-grouse to avoid & abandon habitat." BLM issued the Final Environmental Impact Statement (EIS) for this project on 2/9/18.

Forest Service temporarily closes National Forest System (NFS) road 545 for hazard tree removal by Lowman Ranger District d/t Pioneer Fire. Known as Long Creek Road which is 4 miles north of Lowman. Effective until July 10, 2018, Starts at junction of NFS road 582 proceeds northeasterly 15.5 miles to junction NFS road 515.

Emmett Ranger District of Forest Service seeks public help in identifying illegal motorist: 2 jeep-like vehicles were witnessed in destruction of a wet meadows by mud-bogging in late April within Tripod Meadows area 2 miles west of Smiths Ferry.

To view maps of designated routes for motor vehicle use, visit <https://go.usa.gov/xQm6Y>

To view a detailed description of all forest closures visit: <https://www.fs.usda.gov/alerts/boise/alerts-notices>.

To view interactive Boise National Forest closure story map visit: <https://usfa.maps.arcgis.com/apps/MapSeries/index.html?appid=1b9f2d8115374ad3a943d95decd3835d>



NFMS CLUBS SHOW SCHEDULE

SEE NFMS NEWSLETTER FOR COMPLETE LISTING OF SHOWS
IN THE NORTHWEST NEWSLETTER OR WEBSITE

June 15-17: Fri 10-5, Sat 10-5, Sun 10-4
Lower Umpqua Gem & Lapidary Society
Reedsport Community Building
451 Winchester Ave., Reedsport, OR
Bill Hendrickson 541-271-6816
AgateLicker44@utlook.com
Website: ReedsportRockandGemShow

August 3, 4, & 5: Fri & Sat 10-5, Sun 10-4
Far West Lapidary & Gem Society
North Bend Community Center
2222 Broadway, North Bend, OR
Don Innes 541-396-5722
Don-innes.innes20@gmail.com

August 4 & 5: Sat 10-5, Sun 10-5
Darrington Rock & Gem Club
Mansford Grange, 28806 463rd Abve. NE
Darrington, WA
Troy Lehman 360-391-1153
littleexplorers@juno.com

August 11 & 12: Sat 9-5, Sun 10-5
Maplewood Rock & Gem Club
Maplewood Rock & Gem Clubhouse
8802 196th St. SW, Edmonds, WA
Mary Ann Collins, 206-714-3922
collmal@comcast.net

September 8 & 9: Sat. 9-5, Sun 10-4
Clallam County Gem & Mineral Association
Vern Burton Community Center
308 East 4th St., Port Angeles, WA
Kathy Schreiner 360-681-3811 or
Kathy Bachman 360-681-3994
PO Box 98, Sequim, WA 98382

September 8 & 9: Sat 10-5, Sun 10-5
Marcus Whitman Gem & Mineral Society
Walla Walla County Fairgrounds
Community Center Blding,
363 Orchard St.
Walla Walla, WA
Jack I. Edwards, (cell) 509-520-1182
jcedwards1475@hotmail.com

September 15 & 16: Sat 10-5, Sun 10-4
Southern Washington Mineralogical Society
Castle Rock Fairgrounds, 120 Fair Lane
Castle Rock, WA
Robert Klickman & Nicole Doiron 360-785-4417
PO Box 679, Winlock, WA 98596

September 22 & 23: Sat. 10-6, Sun 10-4
Cascade Mineralogical Society,
Green River College, Student Union Building
12401 SE 320th St., Auburn, WA
Mark Hohn, 32009 199th Ave. SE,
Kent, WA 98042 253-332-3736
showchair@cascademineraologicalsociety.org
www.cascademineraologicalsociety.org

October 12-14: Fri 10-6, Sat. 10-6, Sun 10-5
Portland Regional Gem & Mineral Show Assoc.
Washington County Fair Complex
873 NE 34th Ave., Hillsboro, OR 97013
Beth Heesacker, heesack-er@coho.net
4145 NW Heesacker Rd.,
Forest Grove, OR 97116

October 27-28: Sat. 9-6, Sun. 10-5
Bellevue Rock Club, Vasa Park
3560 W. Lake Sammamish PKWY SE
Bellevue, WA 98008
Bruce Himko, POBox 1851 Bellevue, Wa 98009
bellevuerockclub@comcast.net

November 10 & 11: Sat. 9-5, Sun. 10-5
Maplewood Rock & Gem Club
8802 196th St SW, Edmonds, WA
Mary Ann Collins 206-714-3922
collmal@comcast.net

December 8 & 9: Sat. 9-5, Sun. 10-5
Maplewood Rock & Gem Club
8802 196th St SW, Edmonds, WA
Mary Ann Collins 206-714-3922
collmal@comcast.net

ALAA

To all ALAA Members, Rockhounds and Friends,

If you enjoy Rockhounding in the Quartzsite, Brenda or Bouse area of Arizona. Your Recreational Rockhounding days may be numbered. Your help is urgently required to keep Rockhounding alive in these areas. The access Roads are being closed and may be as soon as January 2019.

See the attachment for more information.

Please read the information below and submit any comments and recommendations.

American Lands Access Association, Inc.

The roads being closed here are most of the roads we use in The Brenda AZ. and Bouse, AZ. areas. I haven't checked Cactus plain yet We need to ask for an extension until at least Feb. 1, 2019. Also submit asap any GPS coordinates as rockhound sites needing roads. Also emphasis the need for roads for senior citizens and those with disabilities.

Let me know if you are responding!!

Jack Caufield caufieldj@earthlink.net

News Release:Colorado River District, Arizona

For Immediate Release, May 30, 2018

Media Contact: Dolores Garcia, dagarcia@blm.gov 602-417-9241

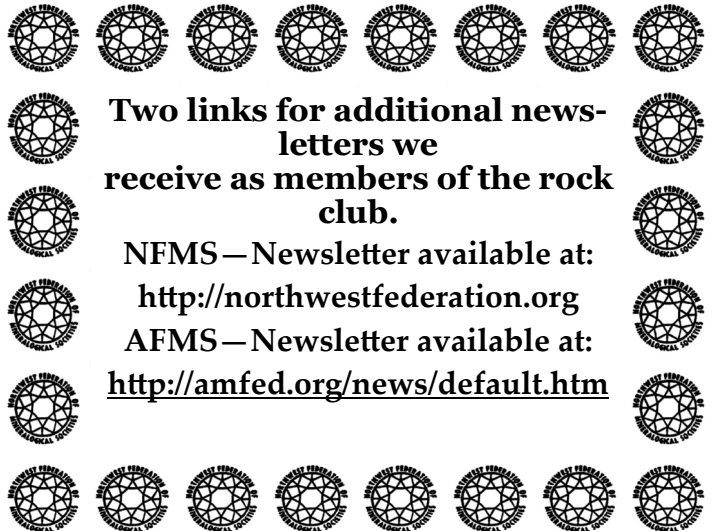
BLM seeks public input on Bouse and Cactus Plain Travel Management Plan

LAKE HAVASU CITY, Ariz. - The Bureau of Land Management Lake Havasu Field Office invites public participation in the review of the Bouse and Cactus Plain Travel Management Plan and Environmental Assessment. The plan and environmental assessment involve the communities of Parker and Bouse in La Paz County, Arizona. The documents have been released for public review and input through an online platform and there will be two open house meetings scheduled for mid-June. Travel management is a comprehensive approach to the administration of travel and transportation networks of roads, primitive routes, trails and areas. This planning includes the inventory and mapping, route designations, and other measures necessary for providing access to and across public lands for a variety of uses by right-of-way holders, recreational users, grazing allotment permittees, mining claim holders and more. The open houses are scheduled for Tuesday, June 12 at the Bouse Booster Club from 4 to

7 p.m. and Wednesday, June 13 at Parker High School from 4 to 7 p.m. BLM staff will be available for discussion, and maps of the travel network alternatives will be on display for review at the following locations: Bouse Booster Club Parker High School (Alumni Hall) [27747 Frame Ave](https://www.google.com/maps/place/27747+Frame+Ave,+Bouse,+AZ+85325/@32.354,-110.744,15z) 1608 Laguna Ave. Bouse, AZ 85325 Parker, AZ 85344 The public comment period is from May 31, 2018 to June 29, 2018.

Stakeholders are encouraged to submit their comments for the record through the BLM online land use planning tool, ePlanning, at the following web address: <https://go.usa.gov/xQvuu>. The ePlanning site also has an interactive web map that will record public comments online. Written comments may be mailed to: Lake Havasu Field Office, [1785 Kiowa Ave, Lake Havasu City, Arizona 86403](https://www.google.com/maps/place/1785+Kiowa+Ave,+Lake+Havas+City,+AZ+86403/@32.354,-110.744,15z), faxed to (928) 505-1270, or emailed to blm_az_lhfo_tmp_comment@blm.gov. More information is available online at: <https://go.usa.gov/xQvuu>

The BLM manages more than 245 million acres of public land located primarily in 12 Western states, including Alaska. The BLM also administers 700 million acres of sub-surface mineral estate throughout the nation. The agency's mission is to sustain the health, diversity, and productivity of America's public lands for the use and enjoyment of present and future generations. Diverse activities authorized on these lands generated \$75 billion in sales of goods and services throughout the American economy in fiscal year 2016 - more than any other agency in the Department of the Interior. These activities supported more than 372,000 jobs.



Two links for additional newsletters we receive as members of the rock club.

NFMS—Newsletter available at:

<http://northwestfederation.org>

AFMS—Newsletter available at:

<http://amfed.org/news/default.htm>

Application

Earth Science Scholarship Awarded by the Idaho Gem Club, Inc.

Description: The Idaho Gem Club, Inc., a 501c3 non-profit organization devoted to promoting “the interests of its members in mineralogy, geology, gemology, the art of lapidary and kindred arts and sciences” is offering a \$500 scholarship for to help defray the educational costs for a local undergraduate Earth science student (see eligibility criteria below).

Eligibility: Applicants must be a full time, undergraduate student majoring or minoring in Earth science (including geology, geophysics, and earth science education) at a two- or four year college or university in the Treasure Valley region of Idaho during the 2016-2017 school year. Although not required, preference may be given to Idaho residents.

Terms of acceptance: The funds provided through this scholarship are to be used solely for the purpose of meeting the costs of undergraduate education, including tuition, books or materials, or field camp fees. Awardees are requested to visit a general meeting of the Idaho Gem Club, Inc. to give a short 15-20 minute presentation on an Earth science topic of general interest to our members.

Instructions: Please fill out in full the two page application form on the following pages. Note that as part of the application, a 1-2 page essay is required in addition to the information requested in the application. Applicants must have their application endorsed (via signature) by an Earth science faculty member at the institution they are attending during the 2017-2018 academic year. Completed applications should be **received by September 30, 2018** either by email (pneuhoff@yahoo.com) or at the following address:

**Scholarship chair person
Idaho Gem Club Inc.
P.O. Box 8443
Boise, Idaho 83707- 8443**



IDAHO GEM CLUB,**INC.****FREE APPLICATION FOR
EARTH SCIENCE****SCHOLARSHIP**

The Idaho Gem Club Inc. is offering
time college or university student majoring in Geology, Geophysics, or Earth Science
Education.

a \$500 scholarship for any full

Applications must be filled out and either emailed (pneuhoff@yahoo.com) or returned
to:

**Scholarship chair person
Idaho Gem Club Inc.
P.O. Box 8443
Boise, Idaho 83707- 8443**

before September 30, 2018 to be eligible for the scholarship. Scholarship forms can be
obtained in the Geology department or Financial Aid offices or on the web at [http://
www.idahogemclub.com](http://www.idahogemclub.com)

{Please type or print legibly; asterisk (*) indicates required information}

PERSONAL DATA

Name*:

Address*:

Email: _____

Local Phone*: _____

Are you a resident of Idaho*? _____

Have you ever been a member of a gem or mineral club*? _____

If yes give name and location*:

College or University Attending*:

Class Level (e.g., Sophomore, Junior, etc.) in 2016-2017*: _____

Major(s) and Minor(s)*: _____

Department(s)*: _____

Current G.P.A.*: _____

Name and department of Faculty member sponsoring application*:

APPLICATION ESSAY*:

The Idaho Gem Club, Inc was formed for purposes that included promoting “the interests of its members in mineralogy, geology, gemology, the art of lapidary and kindred arts and sciences.” Please write a 1-2 page essay describing your career goals, and how it will benefit the public good through application of your education in earth science to education, natural resource development and stewardship, hazard evaluation, or similar pursuits as a professional.

Note to applicants:

The scholarship will be awarded at one of the Club’s regular monthly meetings, held on the third Tuesday of each month. We are asking the recipient to present a short program (relating to earth science) at a meeting. Would you be willing to do this*?

SIGNATURE

By signing this application, you certify that the above is true and correct. Also, you certify that you will use Idaho Gem Club Inc. Scholarship funds only for the purpose of defraying the cost of attending an institution of higher education (i.e., tuition, books, etc.)

Student Signature*: _____ Date*: _____

I know the above student and certify that they are an earth science student in good standing and endorse their application.

Signature of faculty sponsor*: _____ Date*: _____

FIELD TRIPS AROUND IDAHO & USA

The proposed 2018 field trip schedule for Idaho Falls follows, but WAGON MASTERS are needed.

Proposed Field Trips	Date	Site	Prospect	Wagonmaster (WM) and Comments
	June 16-17	Specific location TBD	Obsidian	WM: TBD Day trip Difficulty level: TBD
	June 23-24	Pogo Claim	Pogo jasper and agate	WM: TBD Day trip Difficulty level: Easy
	June 30–July 1	Big Southern Butte	Obsidian	WM: TBD Day trip Difficulty level: Rough drive and hard walking.
	July TBD	Gilmore, hosted by Gary Beardall. Activities include: knapping and possible field trips that include: <input type="checkbox"/> Agate Mountain claim <input type="checkbox"/> Nicolai Mine and ghost town	Agate, Opalite	WM: TBD Dry camp at Beardall's near Gilmore ghost town Difficulty level: Easy
	July 14-15	Red Hills, Pass Creek	Agate	WM: TBD Day trip Difficulty level: Moderate
	July 21-22	Lime Creek Hole in the Rock Challis Bench	Agate, Jasper	WM: TBD Camp @ Challis Hot Springs Difficulty level: Easy to Moderate
	TBD	Steak Fry	Angus steaks	WM: Tom Strong
	August 4-5	Specific location TBD	Travertine	WM: TBD Day trip Difficulty level: TBD
	August 11-12	Mackay Mine Hill Tour	Some copper ores	WM: TBD Day trip Difficulty level: Easy
	August 18-19	Blue Jay Mine, Leadore	Azurite, Malachite	WM: TBD Scouting/day trip Difficulty level: Expected to be hard
	August 25-26	Copper Queen Mine	malachite	WM: TBD Scouting/day trip Difficulty level: Expected to be hard
	TBD	LEARNING DAYS		
	Sept. 8-9	Spar Canyon, Challis	Lace agate	WM; TBD Scouting/day trip Difficulty level: Expected to be hard



P.O. Box 8443

Boise, Idaho 83707-2443

The purpose of the Idaho Gem Club is to promote mutual, educational and scientific interests and benefits of its members in mineralogy, geology, gemology, the art of lapidary and kindred arts and sciences.

Dues:

\$22.00 per person
\$25.00 per couple
\$28.00 per family

Subscription:

\$10 per year



GENERAL MEETING
3rd. Tuesday of every month

BOARD MEETING:
1st. Tuesday of every month
Church of the Brethren
2823 N. Cole Road, Boise, Idaho
ALL Meetings Start at 7:30 p.m.

USTICK	
<div data-bbox="1198 1528 1393 1570" style="border: 1px solid black; width: 120px; height: 20px; margin: 0 auto;"></div> <p style="text-align: center;">Mountain View Church of the Brethren 2823 N. Cole Road</p>	COLE
NORTHVIEW	
FAIRVIEW	