


# Grindings

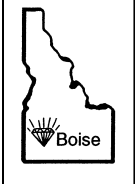
**Idaho Gem Club, Inc.**

P.O. Box 8443  Boise, Idaho 83707-2443

VOL 75 NO 2

March 2015

## President's Message



### BOARD OF DIRECTORS

**Phil Neuhoff**  
President  
939-4508

[pneuhoff@yahoo.com](mailto:pneuhoff@yahoo.com)

**Willa Renken**  
1st Vice President  
362-3941

[wlr\\_dkr@msn.com](mailto:wlr_dkr@msn.com)

**2nd Vice President**  
**Deana Ashton**  
794-5628

[shesteched@msn.com](mailto:shesteched@msn.com)

**Brent Stewart**  
863-9336

[gene@stewartsgemshopinc.com](mailto:gene@stewartsgemshopinc.com)

**Ed Moser**  
340-8060

[ed.moser15@gmail.com](mailto:ed.moser15@gmail.com)

**Melodee Worley**  
890-6834

[melphilw@hotmail.com](mailto:melphilw@hotmail.com)

**Phillip Worley**  
891-3990

[melphilw@hotmail.com](mailto:melphilw@hotmail.com)

**Dana Robinson**  
343-0487

[drobins@boisestate.edu](mailto:drobins@boisestate.edu)

Secretary

Melodee Worley  
890-6834

Treasurer  
Barbara Wanner  
794-7968

NFMS Director  
Charles McCreath  
344-5085

Editor  
Linda Barlow  
724-3309  
[barlow596@gmail.com](mailto:barlow596@gmail.com)

Club Web Site  
[www.idahogemclub.com](http://www.idahogemclub.com)

Thanks to all of you who helped make this year's gem show a great success! Many club members spent hours preparing for the show, setting up, taking down, and volunteering at the show. This year I was pleased to see large numbers of volunteers from loading on Thursday through take down and reloading the storage on Sunday. Thanks to all of you. Attendance was steady all weekend, providing a great chance to show off the club to the community. The show is also our biggest source of income for the year, and without having final numbers I hand I predict that we did well on that front as well. I hope everyone enjoyed they show. I know I did, but was thankful for some rest afterwards.

It has been brought to my attention that we need more volunteers to tumble rocks for use in grab bags at the show. The club has at least one large tumbler that could be borrowed for that purpose, and the club will defray grit expenses. I know there are a lot of people out there with tumbling rough that they could donate as well. If you could help with this, please contact either myself or Willa Renken for details.

A number of club members have donated significant amounts of rocks and other materials to the club. For those of you who qualify for itemized deductions on your tax returns, remember that as a 501c(3) non-profit your donations to the club are tax deductible. If you are interested in receiving a receipt for your donations, please see our treasurer, Barb Wanner.

Spring is in the air and collecting season is just around the corner!

*Phil Neuhoff, President*

**MINUTES OF THE IDAHO GEM CLUB  
GENERAL MEETING  
February 17th, 2015**

**General Meeting**

**February 17, 2015**

**Our meeting was called to order by President Phil Neuhoff, at 7:34pm.**

**The Pledge of Allegiance was led by Board Member, David Douglass.**

**We had several guests and new members here this evening, thanks so much for joining us.**

**A motion to accept the minutes as printed in the "Grindings" (with a correction) was by Clint Chaney, seconded by Twila Gallaher.**

**Door prizes were drawn for Juniors, as well as adults, with 12 lucky winners.**

**Building Fund drew for 2 lucky winners.**

**Juniors will be receiving information about a Youth Poster Contest, being held by the AFMS. Ed will also be handing out about Dinosaur. He spoke of a Dinosaur Museum located in Caldwell. Open 9-5 weekdays, with being open Saturday.**

**There was nothing new from Secretary, Treasurer, or other departments.**

**The conversation and focus of tonight's meeting, is our upcoming show. Help will be needed for loading supplies, at Lockaway Storage. Friday morning help will be needed to set-up for the dealers and other locations for the show. Tear down on Sunday will need helping hands.**

**Each Chair location spoke, volunteers are still needed for most areas.**

**In the Juniors room, Brent Stewart and Aaron Wanner will be answering questions about setting up your case.**

**Our meeting was adjourned at 9pm.**

*Respectfully submitted,  
Melodee Worley - Secretary*



**MINUTES OF THE IDAHO GEM CLUB  
Board Meeting  
March 3rd, 2015**

President Phil Neuhoff called our meeting to order at 7:30pm.

Present this evening were Phil N., Deanna A., Willa R., Dana R., Barb W., David D., Brent S., Melodee W., Sandy B., Ed M., and Cheryl P. Charles M. was absent and excused.

Guests present were Doug R. and Aaron W.

A motion to accept the minutes as printed in the "Grindings" was by Willa R. and seconded by Dana R.

Secretaries report, I collected the clubs mail. Gave mail to our Treasurer. I've received a donation of books at the least general meeting, from Patsy Bethel. I've also been given a new book, from Mac's Gems, who was present at our recent show. The book is about "Dryhead Agate." Mac's Gems also donated a specimen of a Dryhead Agate for our black light room display. From the Silent Auction table, Cheryl Link came across a Lapidary Journal, featuring Dryhead Agate.

Treasurers report Barb spoke of balances and disbursements. At the upcoming general meeting she'll have some information about attendance and money's made, at our recent show.

There seems to be some confusion about our membership applications. There was no email information line, other concerns were about family memberships. A family should be a couple with children under the age of 18.

Our Show Chairman, Brent Stewart, will be contacting dealers, to advised them of the increased in fees for the show in February 2016. Fees went from \$14 to \$18 per foot of table space purchased.

Federation information, "Stamps" should be turned in at this upcoming meeting. Charles was absent for the evening. But don't forget the NFMS Annual Meeting in Ogden, UT. They're to have some field trips in the area, at that time.

Show locations were discussed. It had been suggested to start looking for Chairs for our February 2016 Show, in November and December of this year. We felt with all that needs taken care of to start in September and October.

It's coming to the clubs attention that both The Dingley's and Gene Alvey, will no longer be tumbling rock for the grab bags. The tumblers are quite large, grit is reimbursed from the club. So anyone wanting to continue this task, contact any Board Member.

I'm looking into new table coverings, I've found a source for the cloth, but I'm looking into another option, before I get permission to go forward with the purchase. I'll keep everyone informed.

Deanna A. is planning this months program on "Fluorescents." So anyone that thinks they may have a specimen that might be florescent bring it to the meeting.

Juniors Ed M. has specimens for you at this meeting. "Bring your Folders."

No workshop will be held at this time.

Deanna A. will be asking for volunteers for refreshments.

Field trips will begin in April. The first will be to Graveyard Point.

Old Business, Lifetime members will be recognized, Gene & Philena Thompson, Chuck & Gerri Goertzen, and Honorary Lifetime members James & Helen Dillion. A motion to accept was by Willa R. and seconded by Ed M. These members will be recognized at our Annual Banquet in January 2016.

Phil N. brought up that a longtime member, Don Nelson, had recently passed away. Doing what he loved rockhounding and riding his 4-wheeler. His family may be having a sale in the future.

New memberships were reviewed, 13 were approved. With 2 pending, a motion by Dana R. and seconded by Ed M.

Our meeting adjourned at 9:10pm.

*Respectfully submitted Melodee Worley - Secretary*

**Federation report is as follows, per the NFMS newsletter:**

DEC/JAN 2015 NORTHWEST NEWSLETTER VOL. 55, NO. 2 PAGE 7 **2015 NFMS SHOW UP-DATES, APRIL 10-12, 2015**

**OGDEN-GRAM #2****By Evan Day**

For those who like to make their reservations early; the **Headquarters** for the **NFMS 2015 Show and Annual Meeting** is Ogden's "**Comfort Suites Hotel**". At this "full service" inn, we will not only have exceptionally nice rooms with full breakfasts included; but the committee luncheons and the Awards Banquet are also taken care of by their on-site restaurant. Just off I-15, it is a short drive to the show site, and 21st street is an easy access road to downtown Ogden with all of its attractions. For reduced rates, be sure to mention you are with the "NFMS convention". Call (801) 621-2545 or visit their website at "<http://www.comfortsuites.com/hotel-ogden-utah-UT422>".

On the other side of I-15 is the full hookup **Century Mobile Home and RV Park**. They also will offer a reduced rate if enough folks make reservations. (801-731-3800) or "<http://centuryparkrv.com>") There is free dry camping in a paved parking lot right next to the Show; and the fairgrounds has several "electric only" spots next to the equestrian facilities about a block away.

The **NFMS Annual Meeting** will be at 4:00 on Friday afternoon, about 100 yards from the show building in the Golden Spike Events Center. The **ALAA meeting** will be just before, at 1:00 Friday in the same conference room. We have invited **U.S Representative Rob Bishop**, whose district includes Ogden, to speak to us. Mr. Bishop is the designated Chairman of the House Natural Resources Committee in the incoming 2015 Congress! This is the key body for everything we Rock-hounds are concerned about! Rob's schedule is not yet settled, but we are optimistic we can get him.

The **Awards Banquet** will be in the Baja Room of the Hotel, buffet style so we all get good hot servings. **Bob Jones**, editor of "Rock & Gem Magazine, will probably be our featured speaker at the Dinner. He will confirm this later (after his computer gets fixed. (Even HE isn't immune!)

Elsewhere in this NFMS newsletter, you will find the application forms for exhibiting at the Show. The same forms serve for both **Competitive and Non-competitive** displays. Just fill in the appropriate parts pertaining to your application. We will have a at least 60 cases, with first priority given to Competitive exhibits; next to Non-competitive exhibits from folks in clubs outside of Ogden, and the rest from around the area. At Hermiston last August, the **Rice Museum** in Portland offered to bring one of their wonderful items, a special treat indeed.

In addition, we will be delighted if folks in the NFMS volunteer to **Demonstrate** their many skills during the Show. Let me know if you can do so, and I will have our Demo chairman call you for details. Also scour your yard and garage for good stuff to bring to the **Silent Auction**.

During the Show we will be treated to tours of the **Eccles Dinosaur Park** acres of life-size reproductions of these pre-historic creatures. In the main building are many more exhibits, and the **Palentology Laboratory** staffed by several volunteer Golden Spike Club members in association with the **Natural History Museum of Utah**.

Field trips to Topaz Mountain and Wendover (in the West Desert) are on tap. More information later as ideas and the weather develop.

More details will follow in future Ogden-Grams. Questions? Contact Evan Day at 801-391-2912 or email to [eday@sisna.com](mailto:eday@sisna.com).

OGDEN-GRAM #2 12-10-14

## Idaho Gem Show Basket Raffle Winners

Basket #1-Smithsonian Rock and Gem Dig - won by Liam, Kuna  
 Basket #2 - Gold Prospecting Day Trip - won by Jean MarieMcAvoy  
 Basket #3- State Quarters-won by Jackson Neuhoff  
 Basket #4- Fossil collection-won by Tammy Clapp  
 Basket #5- Birdhouse books and birdhouse-won by Brent Stewart  
 Basket #6- Crystal Jewelry set-won by Maria Price  
 Basket #7-Geocaching Package-won by Celeste Brooks, of Ricks Rocks  
 Basket #8-Brazilian Agate Obelisk-won by Debbie Knudsen  
 Basket #9-necklace/earring set-won by Jackson Neuhoff  
 Basket #10-necklace/earring set-won by Jackson Neuhoff  
 Basket #11-Healing Therapies by L. Barlow-won by Teresa Ruelas  
 Basket #12-Healing Therapies by L. Barlow-won by Jennie VanCamper  
 Basket #13-Healing Therapies by L. Barlow-won by Norma Bailey

THANK YOU ALL FOR BUYING RAFFLE TICKETS  
 AND HELPING US RAISE MONEY FOR OUR  
 WORKSHOP/BUILDING FUND!!!

Special Thanks to Earth Light Minerals and Crystals for donating the Brazilian Agate Obelisk, Idaho Gold & Silver for donating gem bracelets for therapy baskets, and Linda Barlow for donating your Healing Therapies, WhistleStop Garden & Nursery, Kuna for the birdhouse, P. Neuhoff for the fossil collection, Idaho Gold Prospectors for the Gold Outing Trip!  
 Our thanks to Kuna Lumber & Hardware for donating the sand for our Treasure Dig!

Special Thank you  
 to Jim Clinton and Phil Worley, Jackson and Phil Neuhoff  
 The New Treasure Dig at the Gem Show  
 Thank you to Jim, Phil, Jackson and Phil for making the Treasure Dig feature so fun and successful! You guys really made it fun and ever changing by sneaking by and planting new treasures in box throughout the show. Unbelievably cool stuff you added! Everyone had a treasure to take home!  
 I appreciated your enthusiasm and support.  
 Warm thanks to all who participated in Basket Raffle !  
 Over 200 tickets were sold, 42 to Brent Stewart and 48 to the Neuhoffs! Jackson helped by running booth most of weekend!  
 Both features made a great contribution to our workshop fund!  
 You guys are a good example of teamwork and support that keeps our club growing in good directions!  
 Next year will be even better!

fluorescent cosmic rock post :<http://geology.com/articles/fluorescent-minerals/#.VPiDTg-TYE.email>

## NORTHWEST FEDERATION SHOWS

**Owyhee Gem & Mineral Society** Sat Mar 7, 2015 - Mon Mar 9, 2015  
**Where:** O'Conner Field House 2200 Blaine Caldwell, Idaho  
**Panorama Gem and Mineral Club** Sat Mar 7, 2015 - Mon Mar 9, 2015  
**Where:** Colville Fairgrounds Ag Building, 317 West Astor, Colville, WA  
**Tualatin Valley Rock and Gem Club** Fri Mar 13, 2015 - Mon Mar 16, 2015  
**Where:** Hillsboro Fair Plex 873 NE 34th Avenue Hillsboro OR  
**Magic Valley Gem Club** Sat Mar 14, 2015 - Mon Mar 16, 2015  
**Where:** Twin Falls County Fairgrounds Merchant Building #1 215 Fair Avenue Filer ID  
**NW Montana Rock Chucks** Sat Mar 14, 2015 - Mon Mar 16, 2015  
**Where:** Flathead County Fairgrounds, 265 North Meridian Road, Kalispell, MT59901  
**Rock and Arrowhead Club Annual Show** Sat Mar 14, 2015 - Sun Mar 15, 2015  
**Where:** Klamath Co. Fairgrounds 3531 South 6th Street Klamath Falls, OR 97603  
**Hellgate Mineral Society** Sat Mar 21, 2015 - Mon Mar 23, 2015  
**Where:** Hilton Garden Inn Missoula, 3720 North Reserve Street, Missoula, MT59808  
**Rock Rollers Club of Spokane WA** Fri Mar 27, 2015 - Mon Mar 30, 2015  
**Where:** Spokane County Fair & Expo Center N.604 Havana at Broadway Spokane WA  
**Mt. Baker Rock and Gem Club** Sat Mar 28, 2015 - Mon Mar 30, 2015  
**Where:** Bloedel Donovan Community Center 2214 Electric Avenue Bellingham WA  
**Sweet Home Rock and Mineral Society** Sat Mar 28, 2015 - Mon Mar 30, 2015  
**Where:** Sweet Home High School Gym 1641 Long Street Sweet Home OR

The club would like to send out a special thank you to all the members and non-members that helped out with the show last month. Even though we had some slots left empty on the sign up sheets everyone came together and made the show a great success! Even though we would love to list everyone's name there is only limited space. You know who you are and the club hopes you know how much your appreciated!



**SUNSHINE LADY REPORT:**

Please let me know if you are aware of any of our members having surgery, an illness, or just in need of cheer. We all can use some good cheer! We try and keep in touch with all our members, and I apologize if we have overlooked any member who has lost a loved one. Please let us know if we can help in any way. Contact Deana Ashton at 208-794-5628 or any Idaho Gem Club Board Member/officer.

**IF YOU WOULD LIKE TO ATTEND ANY GEM CLUB FUNCTIONS BUT ARE UNABLE TO DRIVE, CALL ME! WE WILL DO OUR BEST TO GET YOU THERE!**

Deana- 208-794-5628

**Save Stamps For Cancer Research**

Cut at least 1/4 inch margin around the stamps. You can turn them into Chuck McCreath at our next meeting. **THANK YOU!**

The purpose of the Idaho Gem Club is to promote mutual, educational and scientific interests and benefits of its members in mineralogy, geology, gemology, the art of lapidary and kindred arts and sciences.

**Dues:**

- .....\$22.00 per person
- .....\$25.00 per couple
- .....\$28.00 per family

**Subscription:**

- .....\$10.00 per year

**General Meeting:**

- .....3rd. Tuesday of each
- .....Month at 7:30 p.m.

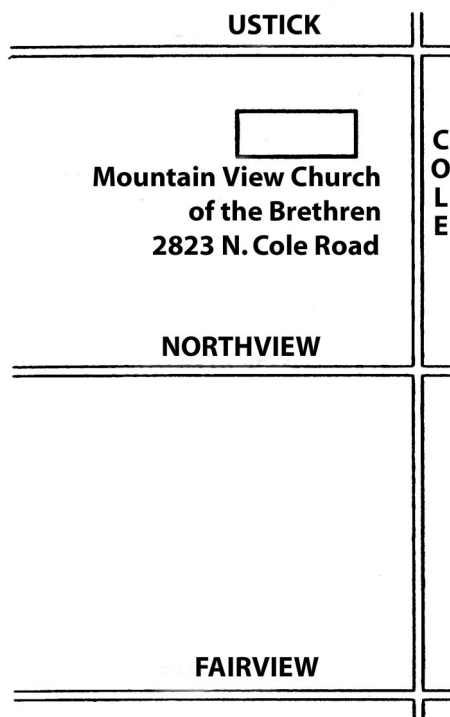


Rocky Rattlers

Juniors need to bring their folders to the meeting this month

THE GRINDINGS

is the monthly newsletter of the Idaho Gem Club, Inc., associated with the Northwest Federation of Mineralogical Societies. Permission to copy is freely granted when proper credit is given to both the publication and the author. Articles without bylines are written by the Editor or President.



The Whangdoodle Bird  
(Often seen on field trips)



## Bench Tips

Get all 101 of Brad's bench tips in "Bench Tips for Jewelry Making" on Amazon [www.amazon.com/dp/0988285800/](http://www.amazon.com/dp/0988285800/)

### WINDING JUMP RINGS

Whenever you need a few jump rings the same size, it's easy to grab a round rod and wind as many as you need. But when you need a lot of them, some form of winder saves a lot of time. A variable speed screw gun makes quick work of winding the coils. Screw guns are quite inexpensive at discount stores and are remarkably handy for odd jobs in the shop and around the house.

To wind a coil, just bend a right angle on the end of the wire about a half inch long and insert this into the screw gun chuck. Then wind slowly, keeping a tight coil. I like to rest the end of the mandrel on the edge of the table or bench pin. Finally, one note of caution. If you are winding an entire length of wire, be careful as you get near the end of the wire. If the end passes under your thumb, it can cause a nasty scratch or cut.



### TOUCHING UP A BEZEL

Pumice wheels are good for touching up a bezel after you've set the stone. The hardness is about 6 on the Moh's scale, less hard than quartz, so it shouldn't scratch any of your agates or jaspers. However, I'd avoid or be real careful of using pumice near the softer stones like turquoise, amber, howelite, etc.

If you're unsure about the hardness of your wheels, test them on a piece of glass. Glass is about 5 1/2 on the Moh's scale, softer than quartz. So if the wheel doesn't harm glass, it's safe for use on the quartzes and harder stones.

My preference is the one inch diameter ones such as those shown at [riogrande.com/Product/AdvantEdge-Pumice-Wheels-Medium/332722?pos=2](http://riogrande.com/Product/AdvantEdge-Pumice-Wheels-Medium/332722?pos=2)

**Workshop Report**  
**No Workshop month**

## Idaho Gem Club Field Trips 2015

APRIL 25: Plume Agate @ Graveyard Point, Idaho

May 23: Fire Opal & Jasper @ Whangdoodle-Queenstone, Idaho

June 20: Petrified Wood @ Bruneau, Idaho

July 24-26: Obsidian @ Glass Butte, Oregon

August 22-23: Agate @ Carry, Idaho

September 19: Jasper @ Haystack Butte, Oregon

**SOMETIME THIS YEAR:** Agate Nodules @ Beacon Hill, Idaho

Field Trip Contacts:

Aaron Wanner: [aaronwanner@gmail.com](mailto:aaronwanner@gmail.com) or 208-794-9474

Brent Steward: [rocksbybrent@gmail.com](mailto:rocksbybrent@gmail.com) or 208-863-9336

## Welcome New Members

1. Chris Hebert & Daisy Garner, Boise
2. Cherrill Hyatt, Boise
3. G. Rigby Whitends, Boise
4. Suzanne Lewis, Boise
5. Marce Whyllie & family, Eagle
6. Mark Stevens & Randi Gladwell, Nyssa
7. Kathy & Len Corless, Boise
8. Randy & Jodie Harrison, Boise
9. Heather & Mark Fisher, Meridian
10. Steve & Judy Markel, Boise
11. Lisa Misner, Boise

### REFRESHMENT COMMITTEE GUIDELINES

1. Have tables covered with paper obtained from Statesman and ready by 6:00 p.m.
2. Bring door prizes
3. Order ice cream and arrange for pickup.
4. Serve ice cream

**When picnic is finished, clear all paper from tables and deposit all litter and debris in trash containers**

**Potluck Dinner**

**Ice cream and sodas provided**

**Bring your own plates and silverware**

HAPPY



BIRTHDAY

## April

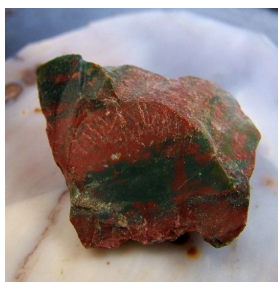
4/2 John Benedict  
 4/3 Marcy Belcoe  
 4.8 Sherry Hederer  
 4/10 Roger Johnson  
 4/13 Edwin Moser  
 4/13 Rick Olmstead  
 4/14 Linda Barlow  
 4/15 Jack Gambassi  
 4/17 Ann Basley  
 4/17 Jeanmarie McAlvoy  
 4/19 Rick Corbett  
 4/22 Willa Renken  
 4/27 Terry Belcoe  
 4/28 Jim Yandle

## April Birthstones

Faceted — Diamond  
 Cabochon — Rock  
 Crystal

## MARCH

3/5 Gene Alvey  
 3/5 Kathy Corless  
 3/6 Helen Dillion  
 3/7 Judy Blodgett  
 3/7 James Dillion  
 3/13 Cyndy Schmidt  
 3/13 Barbara Wanner  
 3/13 G. Rigby Whitends  
 3/18 Chuck Fawcett  
 3/18 Carl Woodland  
 3/19 Jean Gonzolas  
 3/22 Andrew Housh  
 3/23 Mike "Red" Lovett  
 3/23 Philip Worley  
 3/28 Jacque Yandle  
 3/28 Gene Stewart  
 March Birthstones  
 Faceted — Aquamarine  
 Cabochon — Bloodstone



## Dates To Remember

## GENERAL MEETING

3rd. Tuesday of every month

## BOARD MEETING:

1st. Tuesday of every month

2 September 2014

Church of the Brethren

2823 N. Cole Road, Boise, Idaho

Meeting Starts at 7:30 p.m.

**AQUAMARINE:** Protects travelers. Good for the brain & intellect. Helps study, communication, & courage. Builds tolerance & responsibility. Makes things happen. Brings you in contact with your inner & higher self. Good for centering & meditation. Gently washes away blocks in chakras. Useful for closure on all levels. Clears pollutants (when used in visualization).

In ancient times, it was believed to counteract the forces of darkness & procure favor from the spirits of light. It was carried by sailors as a talisman against drowning.

**BLOODSTONE:** Brings courage, vitality, & creativity. Good for balance & getting rid of toxins. Good for emotional centering & calming. Helps stress & aggression. Good for controlling & releasing bad temper.

It is believed to have mystical & magical properties, controlling the weather & conferring the ability to banish evil & negativity & to direct spiritual energies.

In ancient times, it was said to have been an "audible oracle" giving off sounds as a means of guidance.

Place in a bowl of water beside the bed to ensure peaceful sleep.

Two links for additional newsletters we receive as members of the rock club.

NFMS— Newsletter available at:

<http://www.amfed.org/nfms/newsletters.asp>

AFMS— Newsletter available at:

<http://amfed.org/news/default.htm>