


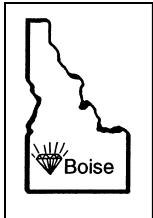
# Grindings

*Idaho Gem Club, Inc.*

P.O. Box 8443  Boise, Idaho 83707-2443

**VOL 74 NO 2**

**February 2014**



## **BOARD OF DIRECTORS**

**Phil Neuhoff**  
President  
939-4508

**Willa Renken**  
1st Vice President  
362-3941

**2nd Vice President**  
**Deana Ashton**  
794-5628

**Brent Stewart**  
863-9336

**Ed Moser**  
340-8060

**Melodee Worley**  
890-6834

**Phillip Worley**  
891-3990

**Barb Carey**  
906-5968

**Dana Robinson**  
343-0487



## **SECRETARY**

**Melodee Worley**  
322-5985

**TREASURER**  
**Barbara Wanner**  
794-7968

**NFMS DIRECTOR**  
**Charles McCreath**  
344-5085

**EDITOR**  
**Tony Griffin**  
467-9286

highdesert2003@q.com

**CLUB WEB SITE**  
www.idahogemclub.com

## President's Message

It was a great pleasure seeing the wonderful turnout at our banquet in January. I would like to thank Jim Da Silva and the other committed members of our club who organized this great event. It was a fun evening where we honored three new life members (Kim Williams, Sandy Blodgett, and Ron Coolbaugh), feted our long-serving historian Patsy Bethel, recognized the Project of the Year winner (Aaron Wanner), and installed this year's slate of directors and officers. As always, hats off to Gene Stewart for doing such a fine job emceeing the event.

As you are all aware, our annual Gem Show is this month on the 22<sup>nd</sup> and 23<sup>rd</sup>. The next few weeks leading up to the show will be busy and I encourage everyone to help in as many aspects as possible. The grab bag stuffing party is the weekend before (February 15 at 9 AM) at the church. Please bring any tumbled stones, bags, and goodies you might have to contribute. The week of the show will be a particularly busy time. We will be loading trailers at Lock-A-Way Storage on Thursday the 20<sup>th</sup> at 1 PM. The more hands the better so please come if you are available. Remember to bring work gloves; the tables have a nasty habit of giving splinters. On Friday the 21<sup>st</sup> at 8 AM we will meet at Expo Idaho to set up for the show. After the show closes at 5 PM on the 23<sup>rd</sup>, we will need help taking down. I hope everyone will be able to spend as much time as possible at the show. We still need help with many of the stations at the show. Signup sheets will be at the meeting on the 18<sup>th</sup> for those who have not had a chance to sign up. For those of you with children, who need volunteer hours for school, remember that the show is a great opportunity to fulfill those requirements. Speaking of the show, I hope that each and every member of the club will reach out to friends, co-workers, family and others and invite them to visit the show. The show is a wonderful educational opportunity for young and old alike. I anticipate another superb group of display case submissions this year (hint: please sign up for one or more; details can be found elsewhere in the Grindings) that provide a great opportunity for learning about the Earth. Our dedicated group of volunteer demonstrators provides a great opportunity for the public to learn about the lapidary and jewelry arts. I learn something new every year and I am sure you will too.

Elsewhere in the grindings you will find a brief survey aimed at assessing how well the club's programs meet member interests. I hope that everyone will take the time to fill it out. My own philosophy is that the club is here to provide opportunities that the members want to further enjoy our hobby. Your responses will help determine how we can do that. We have some very dedicated club members who are working hard to enrich our experience. Making programs like the show, workshop, field trips, juniors, meeting programs and other activities of the club successful require assistance from everyone, and I hope everyone will pitch in for the benefit of all.

In closing, I would like to thank Brent Stewart for the fine job he has done leading the club the last few years. His able leadership has left the club in great shape. I know he is committed to continuing his service to the club through his role as show chairman and as part of our field trip committee. I look forward to serving the club and continuing where Brent left off.

*Phil Neuhoff*  
*President*

**MINUTES OF THE IDAHO GEM CLUB  
GENERAL MEETING  
January 21, 2014**

75th Annual Banquet of the Idaho Gem Club  
January 21, 2014

Mr. Gene Stewart called order at 7pm.

He introduced the Head Table: Charles and Shirley McCreath, Brent and Gia Stewart, Eugene and Alice Stewart, Phil and Christy Neuhoﬀ, and Phil and Melodee Worley.

The Blessing was given by Chris Blickfeldt. Dinner began to be served.

Our table favors were provided by Dan and Marge Conley. The number 5 was drawn for the lucky winners. Gene also drew a ticket for a door prize, Mettie Clay, 1 of our Lifetime members.

Anniversary Congratulations to Charles and Shirley McCreath 59 years and Roy and Patsy Bethel 68 years. A special mention of Shirley McCreath, who very seldom misses a board meeting. "Good to know someone is keeping an eye on us".

We had several first-time members attending this evening.

After dinner finished. Gene introduced past Presidents of the club.

1971- Patsy Bethel

1976- Gene Stewart

1997- Charles McCreath

1998-99- Chris Blickfeldt

2000-03- Willa Renken

2004- Ron Ridenour

2005- Marge Conley

2006-08- Cathy Parsons

2009- Tony Griffin (Tony resigned in July, the term was completed by Marge Conley.)

2010- Jason Madsen

2011-13- Brent Stewart

There was a moment of silence for the passing of members: Dixie Douglas, Betty Hare, and Clarence Trebilcock.

Project of the Year: Aaron Wanner was voted the winner, at our December 17th, general meeting.

Special mention: Thanks to Tony for another great year working on the "Grindings".

Special mention: to Rick Corbet for his handling of special awards, through the Role program.

At this time Gene Stewart handed over the meeting to Brent. No committee chairs needed the floor.

Willa Renken was asked to come forward. She spoke of Patsy Bethel, our Historian. Patsy's printer stopped working, on behalf of the Idaho Gem Club, we presented her with a new printer. Patsy will be sorely missed, but her replacement, Marge Conley, will be taking over. So let's all help her any way we can.

Willa at this time, on behalf of the club, "Thank" Brent

Stewart for his years of service as President. She presented him with a Gift Certificate.

Previous Lifetime members were recognized:

Roy and Patsy Bethel

Chris and Peggy Blickfeldt

Charles and Shirley McCreath

Charlie and Helen Smith

Marion Phillips

Betty Trebilcock

Mettie Clay

Al and Hilda Larson

Gene and Alice Stewart

Marge Conley

Lynne Davis

Mike and Sue Witschen

New Lifetime Members were recognized:

Kim Williams, Sandy and Judy Blodgett, and an honorary mention to Ron Coolbaugh. Certificates were given out. Anyone not present contact the Board. They'll also be given new membership cards.

Officers were installed:

President Phil Neuhoﬀ

1st Vice President Willa Renken

2nd Vice President Deana Ashton

Secretary Melodee Worley

Treasurer Barbara Wanner

Federation Director Charles McCreath

Librarian Melodee Worley

Historian Marge Conley

Board members installed:

Brent Stewart

Barb Carey

Willa Renken

Phil Neuhoﬀ

Deana Ashton

Ed Moser

Dana Robinson

Phil Worley

Melodee Worley

Thanks to the Banquet committee: Jim DaSilva, Charles and Shirley McCreath, and Dan and Marge Conley.

Mention of our Idaho Gem Club Show on February 22-23.

President Phil Neuhoﬀ was presented with the club Opal and the Jade Gavel to close the meeting. Adjourned at 9:30pm.

*Respectfully submitted,  
Melodee Worley - Secretary*

**MINUTES OF THE IDAHO GEM CLUB  
Board Meeting  
February 4, 2014**

2nd Vice President, Deana Ashton called the meeting to order at 7:30pm.

Present this evening were Dana Robinson, Melodee Worley, Phil Worley, Barb Wanner, Ed Moser, Charles McCreath, and Deana Ashton.

Excused for this meeting were Barb Carey, Phil Neuhoft, Brent Stewart, and Willa Renken.

Guests present were Shirley McCreath, Doug Renken, and Jason Madsen.

A motion to accept the minutes as printed in the "Grindings" was by Phil Worley and seconded by Ed Moser.

Secretary report- I've sent my secretary notes to the Capital Law Group as required. From January 2013 to January 2014.

I've had printed "Lifetime membership" cards. I've received information of an upcoming show. The Yakima Rock & Mineral Club. 53rd Parade of Gems. April 12 & 13. I've got a flyer, cards for directions, and display space applications.

Treasurers report- Barb spoke of balances and disbursements. She's received membership moneys, and a few bills for payment.

Federation report- Charles wants to encourage anyone planning on attending the Hermiston event, motel/hotel reservations are filling fast. Charles pointed out some differences in the NFMS and AFMS newsletters, and their functions.

Our upcoming general meeting, the program will be given by Brent Stewart. "How to set up a Display Case".

Juniors report- Ed wants to remind juniors "TO BRING YOUR FOLDERS". Juniors are also asked to bring in a specimen that may have the ability to be florescent. He wants to encourage juniors to create a display case for the upcoming Idaho Gem Club Show.

Did you know? That the NFMS has a Junior Achievement Award, for age 12 and under? The last winner was Tenaya Madsen, in 2010. If anyone needs further information let an officer or board member know, we'll help with information that's required. There is also an All American Club Award Program.

License plate report- Deana said plate sales are up all over the state of Idaho. She's working with a local Journalist, that will be writing articles concerning what our license plate moneys go for. She's working with the DMV to create information, that will be available to view at the license branches, to inform people what part of their fees support. The Facebook page is available and asks anyone on Facebook to share our page with their friends and families.

Doug mentioned advertising for the Idaho Gem Club Show will be running on several local channels. Gene Stewart will place an ad in the Statesman. Parking tags will be available for members admission to the Expo grounds.

**WE ARE STILL IN NEED OF VOLUNTEERS FOR ALL LOCATIONS AT OUR IDAHO GEM CLUB SHOW. THIS IS OUR CLUB, FOR THIS SHOW TO BE A SUCCESS EVERYONE, THAT CAN NEEDS TO STEP UP!!!!**

Old business there was none.

New business- Charles mentioned that a hearing on June 14, 2014, will be held to discuss the Sage Grouse Proposal. Folks if this goes through, it will mean closing of numerous BLM areas, where we rockhound. Call your local representatives and voice your concerns to this proposal.

He's also letting the club know that Mr. Jim DaSilva will be stepping down from the Banquet Chair. The other committee members will continue the work. The Board would appreciate any feedback about our next Banquet (such as location, food to be offered, ect) let us know.

When out in the field collecting, be **VERY AWARE!!** of collection regulations on BLM lands. Pay close attention to pounds allowed. BLM officers have been seen and their planes heard by several members. **SO READ UP BEFORE HEADING OUT!**

We had 3 new member applications. A motion to accept these members was by Ed Moser and seconded by Deana Ashton.

The meeting was adjourned at 9pm.

*Respectfully submitted,  
Melodee Worley - Secretary*

**University of Idaho Professor Unearths the  
Surprising Geology Deep Beneath the  
Galápagos Islands**

**Tuesday, January 21**

MOSCOW, Idaho – University of Idaho geologist Dennis Geist is digging deep into the mysteries of one of Earth's most unusual island chains, the Galápagos. He and a team of researchers from across the nation have published a paper that challenges some of the conventional explanations of how the islands' geology has formed.

Geist describes the rock layer deep below the Galápagos as a sponge. Traditional views held it was a "dry" sponge, just hot rocks. But Geist and his colleagues' data indicate the sponge is actually "wet," filled with hot magma.

"What my colleagues are seeing with the seismic waves is that the rocks are actually starting to melt, and they're starting to melt much, much deeper than anyone ever imagined before, and in locations that no one suspected," Geist said.

Their research, reported in the February issue of the journal *Nature Geosciences* and released online Jan. 19, is key to a fundamental scientific understanding of how the Galápagos – and other islands – formed.

"Ocean islands have always been enigmatic," Geist said. "Why out in the middle of the ocean basins do you get these big volcanoes? The Galápagos, Hawaii, Tahiti, Iceland, all the world's great ocean islands – they're mysterious."

Geist, who has worked in the Galápagos for more than 30 years, partnered with a University of Oregon team led by Douglas R. Toomey and his student Darwin Villagomez, who gathered seismic data from the Galápagos. Toomey is a pioneer in using seismic tomography to explore the Earth's interior. Much like a CAT scan sends x-rays through tissue to create images of the inside of a human body, their technique uses seismic waves that pass through rock to map what's beneath the ground.

The team's data reveal that seismic waves pass through the rocks beneath the Galápagos particularly slowly and in a chimney-like structure that they interpret as a mantle plume. The team identified the deep, magma-bearing rocks as the cause.

Mantle plumes, such as the Galápagos, Yellowstone and Hawaii, generally are believed to bend in the direction of tectonic plate migration – they are smeared by the moving plate. In the Galápagos, however, the volcanic plume has decoupled from the plates involved and moves both "upstream" and perpendicular to plate motion.

"Here's an archipelago of volcanic islands that are broadly active over a large region, and the plume is almost decoupled from the plate motion itself," Toomey said. "It is going opposite than expected, and we don't know why."

But, he theorized, the answer may be in the still unknown movement of the gooey asthenosphere, a layer in the upper part of the earth's mantle on which the Earth's plates ride. In their conclusion, the paper's five co-authors theorize that the plume material is carried to the mid-ocean ridge by a deep return flow centered in the asthenosphere rather than flowing along the base of the lithosphere – the earth's crust and the layer of mantle just beneath it – as in modeling projections.

In addition to Geist and Toomey, the paper's co-authors include former University of Oregon doctoral student Darwin R. Villagomez, now with ID Analytics in San Diego, Calif.; Emilie E.E. Hooft of the UO Department of Geological Sciences; and Sean C. Solomon of the Lamont-Doherty Earth Observatory at Columbia University.

Display cases for our Annual Show  
are available—only four slots are left.  
Please call Tony Griffin at 467-9286  
or email at  
[highdesert2003@q.com](mailto:highdesert2003@q.com)

## Bench Tips

### MODIFYING PLIERS

Sometimes a few changes to your tools can significantly improve productivity and quality at the same time. Stock tools can be customized and improved using standard jewelry skills. Here's an example:

Making jump rings and weaving them into chain-mail designs involves a lot of opening and closing of the rings. I typically use two square jaw pliers to do this, one for each hand. But sometimes the rings would slip out of the pliers, getting scratched, and requiring extra cleanup time.

I solved the problem by forming a groove at the end of the jaw that would grasp the ring gently without scratching it. Use a triangular file or cutoff disk to cut the



or cutoff disk to cut the grooves about 1.5 mm back from the tip. Then to make the grooves round so they grasp the wire without distorting it, close the jaws and run a drill through the opening formed by the two

rough grooves. Start with a small drill and follow up with a drill just slightly smaller than the wire size you want to grip. In my case that was 14 gauge wire, so I chose a #53 drill. Finally, polish the grooves with a rubberized disk.

More pictures and details, if needed, are available in the bench tips book.



### MANAGING PRODUCTION

Many readers of these BenchTips sell their jewelry at shows, in galleries or online. They are sole proprietors and constantly under pressure to design new pieces and make

enough product to keep up with demand. So their options are few when a large order comes in. They can burn the midnight oil themselves, or they can be smart and get some temporary help. But you need good help, and you often need it fast.

Jewelry assemblers are skilled, trustworthy and reliable craftsmen who make it their business to help others handle overloads and meet deadlines. Flexible arrangements are possible, working by the job, by the hour or by the piece. Each has a different mix of skills, from fabrication to enameling, casting, stone setting, lapidary and others.

Assemblers are known to the trade, so you may have to ask around to find some references. But some assemblers advertise on the Net. For instance, a good friend of mine, Janice Metz <JenFT4@aol.com>, has been working with designers and fabricators in the West Los Angeles area since 1997. She specializes in silversmithing, wire-wrapping, beading and stringing.

=====

Please use the following attribution with each publication:

Get all of Brad's bench tips in "Bench Tips for Jewelry Making" on Amazon

*Workshop Report*

*No Workshop until*

*April or possibly May*



HAPPY



BIRTHDAY

**FEBRUARY**

2/1 Charles Osgood  
 2/1 Maria Snyder  
 2/3 Nancy Johnson  
 2/3 Winnie Snowball  
 2/4 Andrew Davies  
 2/10/39 The Idaho Gem Club  
 2/10 Kim Williams  
 2/10 Hailey Madsen  
 2/11 Rick Corbett  
 2/11 John Skene  
 2/11 Jim Storey  
 2/12 Bryan Ensign  
 2/13 Kensie Luercher  
 2/13 Arlene Purchase  
 2/13 Terry Potter  
 2/14 Betty Metzger  
 2/16 Kylee Madsen  
 2/16 Shawn Blades  
 2/18 Justin Seaman  
 2/20 Jackson Neuhoff  
 2/22 Martha Nelson  
 2/22 Aaron Wanner  
 2/23 Jim Clinton  
 2/24 James Ensign  
 2/24 Ken Woodbridge  
 2/25 Deanna Moser  
 2/26 Joseph Miles  
 2/26 Rodney Sharp  
 2/26 Erin Seaman

*February Birthstones*  
 Faceted — Amethyst  
 Cabochon — Onyx

**MARCH**

3/2 Daniel Johnson  
 3/5 Gene Alvey  
 3/6 Jean Dingley  
 3/6 Jason Madsen  
 3/6 William Seaman  
 3/7 Judy Blodgett  
 3/7 Ronald Dingley  
 3/13 Julie Folks  
 3/13 Cyndy Schmidt  
 3/13 Barbara Wanner  
 3/15 Hannah Chase  
 3/15 Dave Webster  
 3/16 Kyle Thornock  
 3/17 Aaron Chase  
 3/18 Vicki Bickford  
 3/18 Ivy Gomm  
 3/18 Christie Hale  
 3/19 Eve Gimmel  
 3/19 Jeane Gonzales  
 3/19 Tanra Snodgrass  
 3/20 Evea Jackson  
 3/22 Andrew Housh  
 3/23 Mike Lovette  
 3/25 David Ferguson  
 3/28 Edward Blondin  
 3/28 Larry Friend  
 3/28 Gene Stewart  
 3/28 Jacque Yandle  
 3/29 Roger Coates  
 3/30 Diana Harshman  
 3/30 Heather Madsen

*March Birthstones*  
 Faceted - Aquamarine  
 Cabochon - Bloodstone

**Dates To Remember****GENERAL MEETING**

3rd. Tuesday of every month

February 18, 2014

Church of the Brethren

2823 N. Cole Road, Boise, Idaho

Meeting Starts at 7:30 p.m.

**BOARD MEETING:**

1st. Tuesday of every month

March 4, 2014

Church of the Brethren

2823 N. Cole Road, Boise, Idaho

Meeting Starts at 7:30 p.m.

February 2014

Chair: Barbara Carey,  
 Deana Ashton,  
 Michael Dimmick

**REFRESHMENT COMMITTEE GUIDELINES**

Need approximately 15 dozen cookies.

Wrapped door prizes are also needed.

Arrive early enough to set up the chairs. The chairperson brings the coffee urn, coffee, punch, cream, sugar, cups and napkins.

Afterward, put meeting tables & chairs away, clean kitchen and sweep the room. Gather and take all the trash with you. Don't forget it is the responsibility of the chair for the coming month to pick up the coffeepot, take it home and bring it the next meeting

**PLEASE VOLUNTEER FOR REFRESHMENTS FOR THE 2014 MEETINGS!!**

Sign up sheet will be at February meeting. It is fun to have multiple members participate and share their favorite cookie recipes! Please sign up!

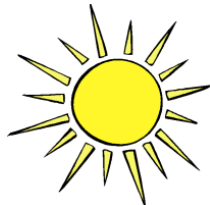
**THE GRINDINGS**

is the monthly newsletter of the Idaho Gem Club, Inc., associated with the Northwest Federation of Mineralogical Societies. Permission to copy is freely granted when proper credit is given to both the publication and the author. Articles without bylines are written by the Editor or President.

CHECK OUT THE CLUB WEBSITE! [www.idahogemclub.com](http://www.idahogemclub.com)

**SUNSHINE LADY REPORT:**

Please let me know if you are aware of any of our members having surgery, an illness, or just in need of cheer. We all can use some good cheer! We try and keep in touch with all our members, and I apologize if we have overlooked any member who has lost a loved one. Please let us know if we can help in any way. Contact Deana Ashton at 208-794-5628 or any Idaho Gem Club Board Member/officer.



**IF YOU WOULD LIKE TO ATTEND ANY GEM CLUB FUNCTIONS BUT ARE UNABLE TO DRIVE, CALL ME! WE WILL DO OUR BEST TO GET YOU THERE!**

Deana- 208-794-5628

**SUNSHINE LADY!**

Please keep Mr. and Mrs. Frank Markum in your thoughts and prayers. Frank is a longtime demonstrator and participant in our annual Gem Show and won't be able to attend this year...we wish a speedy recovery to both of them.

**Idaho Gem Club  
General Meeting Program Schedule**

**February - SHOWCASING YOUR GEMS by Brent Stewart**

**March - GOLD PROSPECTING AND PANNING by Barbara and Bill Carey**

**April - CAVING! by Hester Mallonee 2013 IGC Scholarship Winner**

**May- ROCKHOUNDING 101 - Making the most of your field trip experience - tools/ techniques by Field trip Committee.**

**YESTER YEAR****January 1973**

President John Burrow welcomed 113 members and guests at the January Banquet. John Beckwith gave the invocation, after that dinner was served.

Ralph and Wilma Hern were recognized for their long service of the refreshment committee. Preparations were being made for the Gem Show.

Lynne Knight introduced the new officers and Al Larson is the President.

Ralph Tuttle was presented with a trophy for his long time as Federation Director.

This month's trip will be to Shoo Fly Creek for fossils. A wall display for our Idaho Congressmen in Washington was discussed, no decision was made.

A report to make April Gem and Mineral Month was ready to be signed by the Governor.

An Advertisement for the old club trailer will but put in the Advertiser. The best place to buy a typewriter was at the K-Mart, they also could do any repairs on it. It was reported that last month's field trip was a success. April's field trip to do assessment on the Whangdoodle would fall on Easter Sunday, so it would be postponed a week. By a show of hands there would be 2 field trips the next two months, one regular and one overnigher.

Members were requested to bring their Betty Crocker coupons and their stamps to the next meeting so they can be taken to the Federation meeting.

**A note from Pat**

Thank you for the Printer. I was trying to decide if I wasn't a little too old to get one. I don't know if anyone at the Dinner heard my thanks, it was quite noisy and I was stuttering. I enjoyed my 30 some years as historian and was sorry I could not keep up with everything now that I can't make the field trips and meetings. Pat Bethel

*In Loving Memory  
of Days Gone By  
Patsy Bethel-Historian*

## Earth Science & Lapidary Plate News:

Plate sales increased to 414 as of Dec. 31st 2013.

The Idaho Geologic map delivery to K-6 Idaho schools generated big sales increase !

Please, mention our license plate concept to the next teacher you chat with. Most teachers are unaware of the money we can provide to use in their science classrooms for earth sciences.

### VOLUNTEER REQUEST:

**I NEED PEOPLE TO DELIVER FLYERS TO  
CAR DEALERSHIPS, SCHOOLS IN YOUR AREA!!**

If you pass dealers driving daily, could you help us out by dropping flyers off to dealership managers to give new car owners at time of purchase? Same goes for schools..can you drop flyers at your school principals office to deliver to students and teachers? If we can get a flyer in every students backpack, we have just saved hundreds in postage and reached our target audience. Please, it only takes a few minutes. I will get the flyers to you at any club function or deliver to you.

We will be needing some help during our Gem Show also to pass out flyers for license plates.

With Gratitude and Thanks to you,

Deana Ashton

[208-794-5628](tel:208-794-5628)

[gemdigger2014@outlook.com](mailto:gemdigger2014@outlook.com)

**Two links for additional newsletters we  
receive as members of the rock club.**

NFMS—Newsletter available at:  
<http://www.amfed.org/nfms/newsletters.asp>

AFMS—Newsletter available at:  
<http://amfed.org/news/default.htm>

## Federation & Other Club News

### More Dates to Remember

OGMS—60th Annual Rock Show—O'Conner Field House  
2200 Blaine-Caldwell,Id; Hours: Sat, March 1<sup>st</sup> 10am - 6pm,  
Sun, March 2<sup>nd</sup> 10am - 5pm Admission: \$3.00—Kids 11 and  
under Free (with Adult).

MVGC—Annual Rock Show—Twin Falls County Fair-  
grounds in Filer, ID; Dates—Saturday, March 8, 2014 from  
9:00 a.m. – 5:00 p.m. Sunday, March 9, 2014 from 9:00 a.m. –  
5:00 p.m. Admission Adult – \$2.00 Kids 12 – 18 – \$2.00  
Kids < 12 – free

Idaho Falls—Annual Rock Show—April 12th & 13th -  
more information to follow as I find out the particulars.

Multi—Club Field Trip planned for April 25,26,27 2014.  
Plan on collecting invertebrate fossils, jasper, and agate.

Mike Shaw from the Spokane club is our host and has in-  
vited anyone that would like to come along. We will camp  
at Succor Creek Campground and plan day trips from this  
base camp; possible trips will include Graveyard Point,  
Succor Creek, and Grassy Mountain (near Adrian, Or.)  
Field trips will be led by Tony Funk from Gooding, Idaho  
and Tony Griffin from Nampa, Idaho. High clearance ve-  
hicles are a must for these trips! Bring your own food and  
gear!

Inter-Regional Fieldtrip in Terry, MT. July 31, August 1-3,  
2014. Email [dtruefossils12@yahoo.com](mailto:dtruefossils12@yahoo.com)2014

## EARTH SCIENCE & LAPIDARY LICENSE PLATE NEWS



**VOLUNTEERS NEEDED TO DELIVER FLYERS  
TO CAR DEALERSHIPS!**

**PLEASE CONTACT DEANA AT 208-794-5628.**

**EMAIL: [gemdigger2014@outlook.com](mailto:gemdigger2014@outlook.com)**



*The Idaho Gem Club Presents a*  
**Gem, Mineral & Fossil Show**



**February 22 & 23, 2014**  
**Located at Expo Idaho**  
**5610 GLENWOOD**  
**Boise, Idaho**

**EXHIBITS** of fluorescent minerals, gems,  
fossils & one of a kind jewelry

Retail **DEALERS** of jewelry, gems and minerals



**EDUCATIONAL DISPLAYS** of gems, minerals and fossils

**LAPIDARY DEMONSTRATIONS** in the art of  
cabochon cutting, faceting, lampwork beads &  
the fabrication of silversmithing



**Hours**

**Saturday: 10:00 am - 6:00 pm**

**Sunday: 10:00 am - 5:00 pm**

**ADMISSION: \$3.00 Adults**  
**children 12 and under FREE**



## Welcome New Members

**John & Glenda Bonner  
Justin & Shane Bonner**  
10721 Sandhurst Dr. Boise, Idaho, 83709  
208-713-2762

**Craig Steele & Maria Ortega  
Alan Steele**  
4776 N. Anchor Way  
Boise, Idaho 83703  
208-433-9389

**Woodrow Wyerman & Jeane Gonzales**  
PO Box 166 Adrian, Oregon 97901  
208-327-9511  
541-372-3034

### ***Grab Bag Work Party***

**Hopefully your tumblers are still turning or you already have some tumbled stones ready to be put into bags. We will be filling the grab bags on February 15th at 9:00 a.m. at the church in the gymnasium. This is where the club meetings are held. So we need as many tumbled rocks as possible. The more people who show up to help with the stuffing the faster the process goes. There will also be postcards to put stamps on as well.**

## Save Stamps For Cancer Research

**Cut at least 1/4 inch margin around the stamps. You can turn them into Chuck McCreath at our next meeting. THANK YOU!**

## My Life As A Rock

By Dave Hughes

My life started off as a mass of molten magma deep within the earth. Then as I got a little older I started to rise up slowly toward the surface of the earth. As I went through a tunnel I picked up some minerals. Then I started to grow faster and faster, up up I went. When I reached the top I spewed out all over the ground. I could see my family, they were all around me. We all started to cool down and as the eons and eons went by we got harder and harder. As we laid there and cooled off I got more and more minerals from the ground water that flowed all around us and little tiny crystals started to grow inside of me.

I had nothing to do and no place to go, so I just laid there and watched the time go by as the Earth kept changing. The mountains grew tall and then they were washed away by the wind and the rain. Millions of years went by and then one day a strange creature, (called a Rock Hound) came by and picked me up and took me away from my home and family.

He took me inside his weird cave he called a shop, and threw me down with a bunch of other rocks that he had laying there in the corner.

A short time went by and then one day he picked me up and put me inside of a big box that he called a saw, into something he called a vice and squeezed me real tight, then when he closed the lid there was a loud noise and oil sprayed all over me and then it happened, I was cut into several pieces.

He then cleaned all my pieces and took one of them and marked an oval on me, then he cut me up again all around the oval on a smaller saw.

Then he took me to another machine and started to grind away at me. He went from wheel to wheel down the line and as he went, the grinding got easier and easier.

Then he put me on a wheel that had a smooth cloth that had a weird paste on it he called polish and polished me until I shone so bright you could see yourself.

He then put me in a piece of metal that he called a Finding. When he was all done he sat back and admired me. I had turned into a beautiful piece of jewelry.

Then he took me to another strange cave that had lots of lights and people in it, where he showed me to one of them.

This person took me and put me in a glass case under a bright light and set it out where all the people could walk by and look at me. They said nice things about me. I am so happy with my new life as a rock. 12/24/2013 VIA Magic Valley Gem News

	Yes	No	Maybe	Comments
--	-----	----	-------	----------

**MEETINGS**

Do you regularly attend club meetings?	<input type="checkbox"/>	<input type="checkbox"/>	<input type="checkbox"/>	
--	--------------------------	--------------------------	--------------------------	--

What would you change about our meetings to add interest and participation?

Are there any special programs or activities you would like to see at meetings?

**FIELD TRIPS**

Do you regularly attend club field trips?	<input type="checkbox"/>	<input type="checkbox"/>	<input type="checkbox"/>	
---	--------------------------	--------------------------	--------------------------	--

Would you like to see more field trips offered?	<input type="checkbox"/>	<input type="checkbox"/>	<input type="checkbox"/>	
---	--------------------------	--------------------------	--------------------------	--

Do you have suggestions for Field Trip locations?

**WORKSHOP**

Have you used the club workshop and equipment?	<input type="checkbox"/>	<input type="checkbox"/>	<input type="checkbox"/>	
--	--------------------------	--------------------------	--------------------------	--

Would you use the workshop more if it were available more often?	<input type="checkbox"/>	<input type="checkbox"/>	<input type="checkbox"/>	
--	--------------------------	--------------------------	--------------------------	--

Do you have any suggestions for the future of the workshop?

**JUNIORS**

Do you have children in the club?	<input type="checkbox"/>	<input type="checkbox"/>	<input type="checkbox"/>	
-----------------------------------	--------------------------	--------------------------	--------------------------	--

If so, do they participate in Rocky Rattlers?	<input type="checkbox"/>	<input type="checkbox"/>	<input type="checkbox"/>	
---	--------------------------	--------------------------	--------------------------	--

Do you have any comments or suggestions about the juniors program?

Please feel free to include any other comments, suggestions or ideas you have for improving our Idaho Gem Club on a separate page.

Thank you for sharing your thoughts. You may sign, or submit anonymously.

Please return this survey at the club meeting in February, mail to the club (Idaho Gem Club Survey Committee, PO Box 8443, Boise, ID 83707-2443) or by email to [pneuhoff@yahoo.com](mailto:pneuhoff@yahoo.com).

**The purpose of the Idaho Gem Club is to promote mutual, educational and scientific interests and benefits of its members in mineralogy, geology, gemology, the art of lapidary and kindred arts and sciences.**

**Dues:**

.....\$17.00 per person  
 .....\$20.00 per couple  
 .....\$23.00 per family

**Subscription:**

.....\$10.00 per year

**General Meeting:**

.....3rd. Tuesday of each  
 .....Month at 7:30 p.m.

USTICK	
Mountain View Church of the Brethren 2823 N. Cole Road	COLE
NORTHVIEW	
FAIRVIEW	



**The Whangdoodle Bird**  
 (Often seen on field trips)



**Idaho Gem Club, Inc.**

P.O. Box 8443  
 Boise, Idaho 83707-2443



**Rocky Rattlers**

Juniors need to bring their folders to  
 the meeting this month