


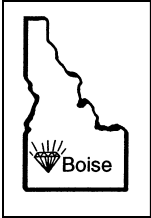
# Grindings

**Idaho Gem Club, Inc.**

P.O. Box 8443  Boise, Idaho 83707-2443

**VOL 73 NO 5**

**May 2013**



## **BOARD OF DIRECTORS**

**Brent Stewart**  
President  
863-9336

**Willa Renken**  
1st Vice President  
362-3941

**2nd Vice President**  
**Phil Neuhoﬀ**  
939-4508

**Ed Moser**  
340-8060

**Jim Clinton**  
283-8891

**Deana Ashton**  
794-5628

**Melodee Worley**  
890-6834

**Phillip Worley**  
891-3990

**Barb Carey**  
435-282-0061



**SECRETARY**  
**Melodee Worley**  
322-5985

**TREASURER**  
**Kathy Griffin**  
467-9286

**NFMS DIRECTOR**  
**Charles McCreath**  
344-5085

**EDITOR**  
**Tony Griffin**  
467-9286  
highdesert2003@q.com

**CLUB WEB SITE**  
www.idahogemclub.com

## President's Message

I hope everyone is excited for this rock-hunting season, we already have two field trips under our belts. The next trip will be out to Graveyard Point for famous plume agate. We have always gathered at the Ion truck stop, which is now under a new name...Gem Stop. I also wanted to mention that Gene Muller from the Gem Shop will be out mining on his Graveyard claim, so this will be a great opportunity to see some big time mining.

Our second workshop of the year will be held at Doug & Willa Renken's home on May 23rd. This is a great opportunity to learn and practice lapidary skills along with having a good time. Thanks again to Doug & Willa for allowing us to congregate at their home.

Phil Neuhoﬀ has revised our scholarship award so if you know of any qualified applicants please direct them to submit an application.

I would like to welcome Chris Wheeler as our new building fund chairman and a big thanks to Dick Corbett for all of his hard work.

I would also like to thank Don King for his generous rock donation to the club. It is always nice to receive good material.

For all of our club Mothers...I hope you had a wonderful Mothers Day!

*Brent Stewart*  
*President*



**MINUTES OF THE IDAHO GEM CLUB  
GENERAL MEETING  
April 16, 2013**

President Brent Stewart called our meeting to order at 7:30pm.

The Pledge of Allegiance was led by Jayden Wanner.

We had numerous Guests and New Members present for the evening.

Adult door prizes were drawn for 29 lucky winners.

Juniors door prizes were drawn for 14 lucky winners.

Building Fund had 2 lucky winners.

Minutes were accepted as printed in the "Grindings"; motion made by Duane Mayer and seconded by Aaron Wanner; the motion carried.

Secretary report--- some mail was received including a few bills and I spoke of an upcoming show, Colorado Mineral and Fossil Show in Denver, from April 19-21, 2013.

Treasurer's report--- Kathy spoke of checking balances and recent disbursements.

Federation report--- Charles reminded everyone of the upcoming NFMS in Butte, MT. The dates of August 9-11, 2013. He advised members that there are to be fieldtrips everyday and schedules are being planned. There will also be tours of Butte and it's surrounding areas. He mentioned anyone going to make sure you bring tick repellant, they will be bad in August.

Library report--- I've received a new Rock & Gem magazine and have also been doing a library inventory and have about half of the library catalogued, once I'm done I'll have a new list of everything.

Juniors report--- Janelle Wintersteen is on the look out for a glass Pyrex saucepan. She has an experiment to work on with the Juniors. The

Mayer's, this evening, have donated Fossilized Clamshells to the Juniors to be given out which they found on their recent Oregon Coast trip.

Workshop report--- Willa advised everyone we would be having our workshop on Thursday the 18th from 6:30-9pm. She'll be needing members to help with instruction and use of our saws and grinding machines. There will be a fire, anyone wanting to bring hotdogs, buns, snacks, and s'mores fixins is welcome to do so.

Owyhee Diamonds and where they can be found will be our program tonight; it will be given by Dr. Charles Osgood.  
Old Business--- none.

New Business--- Deana Ashton spoke about the "Sunshine" committee she handles, anyone in need of good wishes and/or cheer can contact her.

License Plates report--- Deana mentioned sales have been very slow. There are 5+ Rockhound-ing Clubs that she's going to be sending Pack-ets out to, to get the word out more.

Refreshments were served at about 8:15pm. I apologize for forgetting the key to the Library, but I was able to exchange the new Rock & Gem magazine with the previous month's issue.

Our meeting was adjourned at 9pm.

*Respectfully submitted,  
Melodee Worley - Secretary*

**Congratulations**



**Bill & Barbara Belknap**

**Wedding Anniversary this month**

**MINUTES OF THE IDAHO GEM CLUB  
Board Meeting  
May 7 2013**

First Vice-President Willa Renken called this meeting to order at 7:32pm.

President Brent Stewart was excused for the evening, as was Ed Moser.

Board Members present were Phil Neuhoff, Phil Worley, Jim Clinton, Barb Carey, Deana Ashton, Melodee Worley, and Willa Renken.

Officers present were Kathy Griffin, Charles McCreath, and Melodee Worley.

Guests present for the evening were Doug Renken and Marge Conley.

A motion to accept the minutes as printed in the "Grindings" was made by Phil Worley and seconded by Barb Carey; the motion carried.

Secretary's report—we have received three NFMS Directories, all are spoken for, but they will be available at the upcoming General Meeting. The club has received a "Thank You" card from Shirley McCreath for the plant and well wishes we sent her.

Treasurer's report--- Kathy spoke of balances after recent deposits and disbursements for bills presented.

Federation report--- Charles had no new information at this time, his newest NFMS newsletter hadn't arrived yet.

Phil Neuhoff is still finalizing our program for the General Meeting.

Junior's report--- Ed was excused for the evening but as always" BRING YOUR FOLDERS!!!!!"

License plates report--- Deana said the webpage designing is being finalized on Facebook. She'll have addi-

tional information to speak about at our General Meeting. We're exploring a "Mass Mailing" to members listed in the newest NFMS Directory.

Its "OFFICIAL" our new Treasurer is Barbara Wanner, she was appointed by President Brent Stewart. Barbara will be taking over the Treasurer's duties at this upcoming General Meeting.

Old business there was none at this time.

New business we need to purchase a new saw blade for our 30" saw. A motion to make the purchase was made by Phil Worley and seconded by Barb Carey; the motion carried.

On of our guests, Marge Conley stopped by to let the Idaho Gem Club know that the recent rock sale was quite a success. There were some items not sold but the owner wants to donate the remaining rock to our club. It's been suggested that we might create a "Thank You" plaque.

We've received five new member applications, a motion to accept was made by Phil Neuhoff and seconded by Phil Worley; the motion carried.

Our meeting was adjourned at 8:23pm.

*Respectfully submitted,  
Melodee Worley—Secretary*



## Welcome New Members

**Frank & Sherry Hederer**  
 2825 Dill Dr,  
 Boise, ID  
 83705-4128  
 344-8173

**Travis Leach & Juliet Ariosa**  
 3819 E. Alta Ridge Ct.  
 83716-7125  
 720-7743

**John Merritt**  
 1410 N. 16th St. Apt. C  
 Boise, ID  
 8372-2637  
 695-4371

**Aaron & Audra Weslowski**  
 1385 N. El Camino Ave  
 83634-2975  
 230-0608

**Max & Sanna White**  
**Dakota & Donna Ford**  
 4806 W, Mystic Cove Way  
 Garden City, ID.  
 83714-4785  
 949-9885

## License Plate Committee

The Earth Science and Lapidary Arts Special Interest Plate Advertising Campaign is underway ! We are glad to be using Social Eyes Media to create a webpage, and advertise our license plate and purpose through Facebook and statewide media markets. As we are developing information to be included in the website, we welcome any suggestions and ideas from you. Please contact Deana Ashton, Michael Dimmick or Phil Neuhoﬀ and share your thoughts! We will update you as we get more details!

License Plate Sales are improving, but we still have a long road to go! Please, if you know anyone buying a new vehicle RV, trailer, ask them to spend a little extra money when registering vehicle and order our Earth Science & Lapidary Plate. It is such a good cause, the extra money going straight to K-6 earth science studies, field trips, education.

**Help spread the word about our special interest in funding K-6 earth science education by contacting teachers, schools.**

We need to reach teachers and students as well as adults, to spread word of our plate. Schools should send a request to explaining their need/desire for funding projects, field trips, curriculum related to earth sciences. The Plate Committee will review and approve, then send the school the funds for that project. Schools in areas where we have the highest number of sales will receive the most funding.

**Our plate is one of the last unique designs available for use in Idaho!**

The State of Idaho is no longer accepting new license plate designs as of 2012. We have to sell the minimum of 1,000 plates per year, for two consecutive years to keep our program alive. A lot of Idahoans would rather be known as the Gem State versus Famous Potatoes. This can be accomplished with increased awareness of the plate.

**Volunteers needed for June 15, 16 at the Ye Olde Renaissance Faire in Eagle Island State Park.**

10,000 visitors attended this family event last year! We will have a booth this year to promote the license plate and generate interest in Earth Science & Lapidary Arts. Great opportunity to talk with folks about the family fun we have as a club, encourage sales of our plate. Our Scholarship program is one big bonus to becoming involved in our club. Field trips, workshop, special monthly programs show how active our Gem Club is! Sign up at our general meeting in May to spend a few hours helping us and enjoying the Renaissance Faire!

We would like to have a few members demonstrating wire wrapping and working with gems, displaying minerals and finished jewelry made from Idaho's precious resources. Please talk to Deana Ashton at [208-794-5628](tel:208-794-5628) if interested in being a demonstrator/volunteer.

**Thank you for supporting our special "Gem State" Plate!**

**For more information on upgrading your current vehicle registration to the Earth Science& Lapidary plate, and for new sales and renewals, contact your local DMV office.**

*Deana Ashton*

## Weird Geology

From time to time, unusual objects including fish, frogs, birds, seed and nuts, have been reported to fall in swarms from the sky. But on July 17th, 1806, mica fell from the sky at Pimlico, England. After a storm in the middle of the day, the streets of the town were found to be covered with mica. One two-inch-square sample from that fall was originally labeled "talc", but was later identified as being mica.

On October 9th 1939, coal fell from the sky on Springfield, Missouri, during a hailstorm. During the storm one part of the town was peppered with small chips of coal about one-sixteenth to one-eighth of an inch across. Hailstones with black interiors were reported. When these hail-stones melted, they left behind a small piece of coal.

Other unusual hailstones have been observed. In one fall reported in 1872, each hailstone had a small crystal of "sulphide of iron" (pyrite) at its center. In Switzerland, in 1872 there was a fall of "hailstones" that turned out to be mainly composed of imperfect cubic crystals of salt (halite). These unusual mineral falls may be bizarre and hard to believe but they have a reasonable explanation. Windstorms might sweep over piles of coal, crusts of salt in the desert, or a surface occurrence of mica or pyrite where the crystals are weathering out of rocks. The wind may pick up small mobile fragments and they winnow them according to size, shape, or density, thus, flakes of a single mineral might be separated in air from dirt, leaves, twigs or other detritus. A local downburst of wind might then deposit the mineral flakes concentrated in a relatively small area. If the sorted fragments were carried high enough they could be sucked up into a thunder-storm becoming nuclei for hailstones. Likewise, strong windstorms might carry fragments great distances. It is possible, for instance, that the halite "hair" stones that fell in Switzerland originated in the deserts of North Africa. Ref: Handbook of Unusual Natural Phenomena by William R. L. Corliss

Via—The Rock Licker , May 2013

**Joe's slab sale**  
**good variety of slabs**

**carrisite jasper is one type**

**variety of rock also available**

**fire agate**

**few large garnets**

**Oregon sunstones**

**date - middle to late June**

**exact date in June grindings**

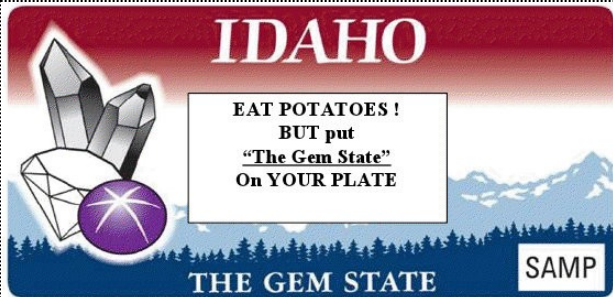
**Joe Nielson**

**869-6325**

**Two links for additional newsletters we receive as members of the rock club.**

NFMS—Newsletter available at:  
[http://www.amfed.org/nfms/documents/NorthwestNewsletter/NW01\\_0213.PDF](http://www.amfed.org/nfms/documents/NorthwestNewsletter/NW01_0213.PDF)

AFMS—<http://amfed.org/news/default.htm>



**IDAHO**

EAT POTATOES !  
BUT put  
"The Gem State"  
On YOUR PLATE

**THE GEM STATE** SAMP

Purchase the Earth Science/Lapidary Special Interest  
License plate for your Vehicle or RV  
At your local Idaho DMV or online !  
Current registration credited towards purchase.  
Proceeds benefit Idaho K-12 Earth Science Education.



HAPPY



BIRTHDAY

**MAY**

Keegan Chase  
 5/1 Peter Santarone  
 5/2 Drake Folks  
 5/5 Deb Butte  
 5/6 Richard Clark  
 5/7 Larry Arnold  
 5/8 Juliet Ariosia  
 5/10 Tyler Gomm  
 5/13 Pat Hobbs  
 5/14 Carl Woodland  
 5/15 Dick Corbett  
 5/16 Amy Halladay  
 5/16 Mike Witschen  
 5/16 Sue Woodbridge  
 5/18 Mary Ellen Biebel  
 5/19 Twila Gallaher  
 5/20 Camille Ridenour  
 5/21 Amy Watson  
 5/22 Janice Egner  
 5/22 Duane Mayer  
 5/24 Deanna Holloway  
 5/24 Mary Ridley  
 5/25 Mike Egner  
 5/26 Cheryl Coates  
 5/26 Michael Dimick  
 5/26 Chuck Fawcett  
 5/27 Joan Dethlefs  
 5/27 Kyle Eden  
 5/30 Gary Dailey  
 5/30 Jesse Lane  
*May Birthstones*  
 Faceted — Emerald  
 Cabochon —  
 Chrysoprase

**JUNE**

6/1 Nathan Nagy  
 6/3 Keith Chipman  
 6/4 June McConnell  
 6/5 Sherry Woodbury  
 6/6 Michiel Bugher  
 6/6 Angie Gomm  
 6/11 Gabriella  
 Schuldenfre  
 6/11 Robert L. Turner  
 6/12 Teri Hetherington  
 6/14 Darlena Rowland  
 6/15 Sarah Neuhoff  
 6/16 Chris Blickfeldt  
 6/17 Sandy Blodgett  
 6/17 Max White  
 6/18 Karla Glick  
 6/21 Laura Lindsay  
 6/23 Dennis Halladay  
 6/24 Bill Carey  
 6/24 Ethan Chase  
 6/24 Beth Rouse  
 6/25 Barbara Davenport  
 6/30 Jonathan Barnett

*June Birthstones*

Faceted — Alexandrite  
 Cabochon — Moonstone  
 Traditional — Pearl

**Dates To Remember****GENERAL MEETING**

3rd. Tuesday of every month  
 May 21, 2013

Church of the Brethren  
 2823 N. Cole Road, Boise, Idaho  
 Meeting Starts at 7:30 p.m.

**BOARD MEETING:**

1st. Tuesday of every month  
 June 4, 2013

Church of the Brethren  
 2823 N. Cole Road, Boise, Idaho  
 Meeting Starts at 7:30 p.m.

**May Refreshments**

Chairs: Charles and Shirley McCreath  
 344-5085  
 Christi Hogle 283-8891  
 Jim Da Silva 396-3199

**REFRESHMENT COMMITTEE GUIDELINES**

Need approximately 15 dozen cookies.  
 Wrapped door prizes are also needed.  
 Arrive early enough to set up the chairs. The chairperson brings the coffee urn, coffee, punch, cream, sugar, cups and napkins.  
 Afterward, put meeting tables & chairs away, clean kitchen and sweep the room.  
 Gather and take all the trash with you. Don't forget it is the responsibility of the chair for the coming month to pick up the coffeepot, take it home and bring it the next meeting.

**June Refreshments**

Chair: Deana Ashton 794-5628  
 Christi Hogle 283-8891  
 Becky Gibson 383-0040

**THE GRINDINGS**

is the monthly newsletter of the Idaho Gem Club, Inc., associated with the Northwest Federation of Mineralogical Societies. Permission to copy is freely granted when proper credit is given to both the publication and the author. Articles without bylines are written by the Editor or President.

CHECK OUT THE CLUB WEBSITE!

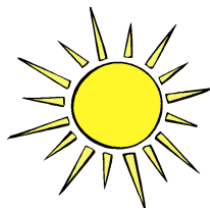
[www.idahogemclub.com](http://www.idahogemclub.com)



## Deana Ashton is our Sunshine Lady

Her job is to send some cheer to members who are ill, in need of prayers, or need some cheering up. Deana needs your help in accomplishing this, you can help by letting her know of anyone that is in need of a little sunshine. Deana will send a card or flowers depending on their situation or occasion.

Deana's phone number is 794-5628



## Bench Tips

## Reshaping Polishing Wheels

Silicone polishing wheels in the Dremel or Foredom are a great time saver, but after using them a bit they often need to be reshaped. This is particularly true with the knife-edge wheels.

The natural thought is to grab one of your files and hold it up against the rotating wheel to reshape it. But this gives you a problem. The grinding grit in the silicone wheel is much harder than steel, meaning that you end up grinding down the teeth of your file.

The best way to reshape your polishing wheels is to use a diamond file or a separating disk. If you don't have one and must use a steel file, I sacrifice the area of the file that is closest to the handle. That's an area which is not used in normal bench work.

## Removing Excess Solder from a Bezel

Sometimes when you solder a bezel to a base plate you end up with excess solder that needs to be removed before setting the stone. My choice of tool for this is called an "Inverse Cone" bur used in a rotary tool or flexshaft. It cuts on both the bottom and the side and is shaped so that there's less chance of cutting into the bezel wall than if you used the more common cylinder bur shape. I find the 2 mm size useful for almost any bezel.

## Plastic in the shop

We often use plastic in our studios, like for a single part die or for a template. So it's handy to have a small supply along with the rest of your sheet, wire, copper and bronze. But we seldom think to buy and stock any plastic.

The plastics store I go to has a scrap bin out back where they give away small pieces and scraps. I usually just go for the 3/8 and 1/2 inch thicknesses for use as forming dies, but there's always a variety of sizes and colors to choose from including thin sheets that are good for templates.

You can find a shop with Google or the Yellow Pages. Next time you go to your local shop, it's worth asking to see if they have a

scrap bin.

## Accurately seeing to sawing a curved line

To saw accurately you have to be able to see the line you are cutting, and it needs to be a precise line. If you mark it with a scribe, it can be precise, but hard to see the shiny mark against the shiny metal. If you mark it deeper with the scribe, it makes for a lot of sanding later to remove the scratches. So, instead you might turn to using a black Sharpie marking pen, so that it's easier to see (due to the contrast with the metal). But even with a fine point Sharpie, the mark has a millimeter or so of width and you may find your blade wandering around within the width of the line you've drawn, or even outside it. How can you mark a cut line you can really see that is also precise? To help, combine the two approaches.

Using a WIDE black marker, draw the APPROXIMATE location of your line on your metal. Then use a sharp scribe (or pair of dividers), LIGHTLY mark the EXACT location of your line through the dark sharpie line. You'll get a bright, precise line that stands out in high contrast from the black background. By scribing lightly, it's easy to sand out the scribed line if your cut wanders off of the exact line a bit. Voila! More precise cutting because you can SEE the precise line!

(Now just practice cutting exactly on that precise line!)

Denny Turner

More BenchTips by Brad Smith can be found at [facebook.com/BenchTips](https://www.facebook.com/BenchTips) or [groups.yahoo.com/group/BenchTips/](https://groups.yahoo.com/group/BenchTips/)



**Rocky Rattlers  
Juniors need to bring their folders  
to the meeting this month**

## Idaho Gem Club Field Trip

April's field trip to Wang Doodle was canceled, due to impassable roads. However the folks that showed for the field trip was given a treat when I got a hold of the Caldwell club and joined them for there field trip to there Pink Plume claim. The weather was awesome and everyone found plenty of very nice material. Thank You Larry and your club members for a wonderful day.

### May Field Trip

Our May field trip will be on Saturday the 25th at 7:00am, we will meet at the Gem Stop truck stop west of Marsing, ID, where hwy 55 meets Hwy 95 and leave around 7:30am for the clubs Graveyard Point claim. Bring shovels, rock hammers, picks, buckets and plenty of water and sun-screen. All vehicle's are fine for this trip. However high clearance is recommended. Hope to see the whole club attend.

*Happy Hounding*  
*Phillip Worley*  
*Field Trip Coordinator*

### May Program:

**Brent Stewart will present on  
 Star Garnets.**

## Federation & Other Club News More Dates to Remember

Owyhee Gem & Mineral Society  
 May 18th— Succor Creek Thunder eggs

Madras POW POW  
 June 26th—June 30th  
 Jefferson County Fairgrounds  
 Madras, Oregon  
[www.allrockhoundspowwowclubofamerica.com/#!/madras-flyer](http://www.allrockhoundspowwowclubofamerica.com/#!/madras-flyer)

Nyssa Thunderegg Days  
<http://www.nyssachamber.com/>  
 July 12th & 13th, 2013  
 Nyssa School Grounds,  
 Nyssa, Oregon

Northwest Rockhound Retreat Labor Day Week  
 September 3 - 9, 2012—OMSI camp at Hancock Field Station  
 about halfway between Antelope and Fossil, Oregon. This is a  
 weeklong event of learning and sharing.

<http://www.amfed.org/nfms/NwRockHoundRetreat.asp>

## Federation Show 2013 - Butte, MT - August 9-11, 2013

NFMS' 75<sup>th</sup> Anniversary Show

Presented by: Butte Mineral and Gem Club

Location: Butte Civic Center  
1340 Harrison Avenue  
Butte, MT 59701

Hours: Fri 9 – 5, Sat 10 – 5, Sun 10 – 5

Cost: Adults \$5, Seniors \$4, Students 10 – 17 \$3, Under 10 free  
 if accompanied by an adult.

26+ Dealers with 100+ exhibits

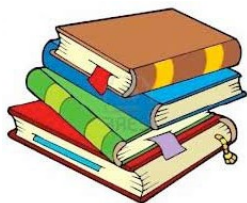
Field trips every day, Silent Auction, Speakers

<http://www.amfed.org/nfms/FederationShow.asp>  
 Show Chair:  
 Pete Knudsen  
 1301 West Gold Street.  
 Butte, MT 59701  
 406.723.8524

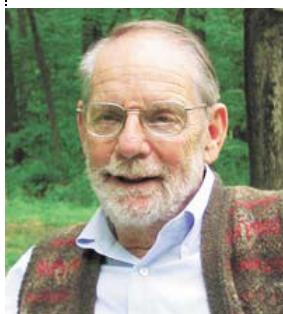


## Book Corner...

John McPhee, for half a century a staff writer for The New Yorker and of the long-form nonfiction piece, became fascinated by geology and geologists in the wake of the plate tectonics revolution that swept the field in the 1960s and 1970s.

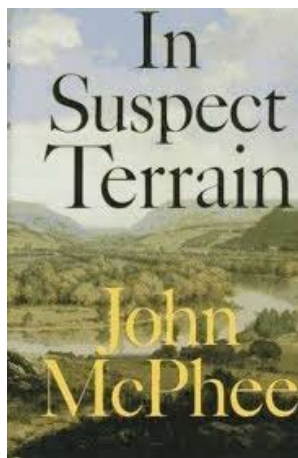


Over the course of twenty years, he crisscrossed the country in the company of geologists, learning all he could, and



from these travels came four books, starting with *Basin and Range* in 1980 through to 1993's *Assembling California*, with *In Suspect Terrain* (1982) and *Rising from the Plains* (1986) between them. These four were later compiled into one hefty volume, *Annals of the Former*

*World*, published in 2000. The central conceit McPhee uses is a view of the geology along the length of Interstate 80, spanning the continent. But this is no Roadside Geology book (as helpful as those are). Rather, each book tells an aspect of the geologic past of this continent, and of all continents, spanning eras and areas, topics and personalities, in prose that is at once erudite and accessible. Whether exploring the relatively "new" lands of the intermountain West, the tired old hills of Pennsylvania, the brash mountain upstarts of Wyoming or the crazy tectonic amalgam that is California, McPhee illuminates the scientists who have cracked the stories in the rock as much as he describes the then-current state of the science. A master of the helpful metaphor, with a sly wit that revels in wordplay, McPhee explains tricky geologic concepts in a manner that makes the reader want to keep the bedside lamp on just a little longer. Though surely the state of the science has advanced some since these were published, nevertheless each of McPhee's geology books (all of which are still in print) remain wonderful reading, and a great introduction to the topic for the general reader.



*Reviewed by Sam Osborne*

One of John McPhee's four books on U.S. geology. But don't stop here...he's covered many other topics!

Via Rocky Trails—April 2013

## YESTER YEAR

March 1971

The Club was busy getting ready for the annual show. Ralph Tuttle ask for \$300.00 for advertising. He also asked that everyone take a few posters advertising the show to display in business's around.

The trip to Graveyard point could not be made because of bad weather conditions, but one could be made to Succor Creek

96 cases were displayed in the show, 30 from other clubs. Plans were made for next years show which would be April 8<sup>th</sup> and 9<sup>th</sup>.

The field trips was to the Whangdoodle opal mine—two field trips were held in May, the first one to Hay Stack Butte for Jasper, and the second the following week, to Emerald creek for garnets.

The July and August picnic's would be held at fireplace #1 as it had more shade.

The door prize was won by Judy Corbitt, a guest of Ralph and Nyssa Tuttle. The donor forgot to bring it, so it is not known what she won, but it will be mailed to her.

Hal Harvey reported a balance of \$1379.46 as of July 1st.

The next field trip will be to Beacon Hill.

*In Loving Memory  
Patsy Bethel—Historian*

## Helpful Hints– from Suzanne Young

### The Hidden Dangers in our hobby.

**Acetone:** An industrial type of solvent containing harmful vapor.

**Hydrogen sulfide:** By-product of sulfur and water. A deadly poison.

**Manganese:** In dust or vapors, it can damage the nervous system.

**Silica Dust:** Quartz, agate, sand-stone, granite, chert, flint: All are of the silica rock family. The dust from this family contributes to silicosis of the lungs.

**Styrofoam:** When heated or burned, it releases toxic gases.

**Abalone:** Grind and polish only when wet. Beware that any odor detected is highly toxic.

**Malachite:** Work wet, as the dust created when working dry is toxic.

**Lead:** Known to enter the body from dust, fumes, and water. It can damage the brain and neuromuscular system.

While it is not healthy to fear every-thing, one should be aware of hidden dangers in apparently innocent looking material that we all use extensively in our hobby. If you are using a material that is new to you, read the labels and heed any warning. We want all lapidarists to remain a healthy lot and continue to live long, and active lives!

From: Gems Tumbler, May 2008 and many other publications.; The Rock Licker May 2013.

Happy  
Mother's Day



## Rockhound "CODE OF ETHICS"

I will respect both private and public property and will do no collecting on privately owned land without permission from the owner.

I will keep informed on all laws, regulations or rules governing collecting on public lands and will observe them.

I will, to the best of my ability, ascertain the boundary lines of property on which I plan to collect.

I will use no firearms or blasting material in collecting areas.

I will cause no willful damage to property of any kind such as fences, signs, buildings, etc.

I will leave all gates as found.

I will build fires only in designated or safe places and will be certain they are completely extinguished before leaving the area.

I will discard no burning material - matches, cigarettes, etc.

I will fill all excavation holes which may be dangerous to livestock.

I will not contaminate wells, creeks, or other water supplies.

I will cause no willful damage to collecting material and will take home only what I can reasonably use.

I will practice conservation and undertake to utilize fully and well the materials I have collected and will recycle my surplus for the pleasure and benefit of others.

I will support the rockhound project H.E.L.P (Help Eliminate Litter Please) and will leave all collecting areas devoid of litter, regardless of how found.

I will cooperate with field trip leaders and those in designated authority in all collecting areas.

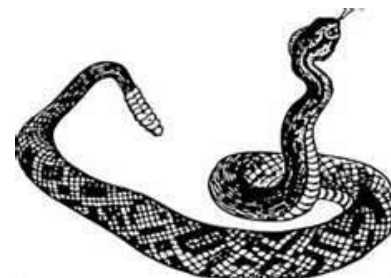
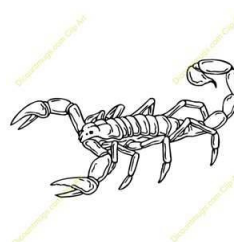
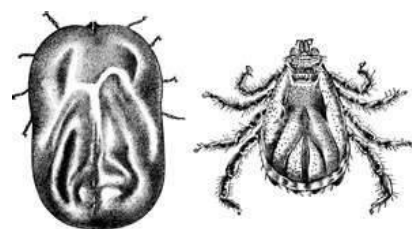
I will report to my club or Federation officer, Bureau of Land Management or other authorities, any deposit of petrified wood or other materials on public lands which should be protected for the enjoyment of future generations for public educational and scientific purposes.

I will appreciate and protect our heritage of natural resources.

I will observe the "Golden Rule", I will use Good Outdoor Manners and will at all times conduct myself in a manner which will add to the stature and Public Image of Rockhounds everywhere.

### Watch out for these critters when you are rockhounding!

female & male tick



Well, it is finally here, the new season of workshops. Are you ready to make a cab or two?

Remember these are for all members or guests. So be sure to bring that special person or child that you want to get interested in our hobby. Our next Workshop will be on Thursday, May 23rd, from 6:30pm to 9:30pm.

There will be a fire so if you want hotdogs and buns, please bring them, I will have the condiments. I have marshmallows and graham crackers for s'mores, but you would need to bring chocolate; so

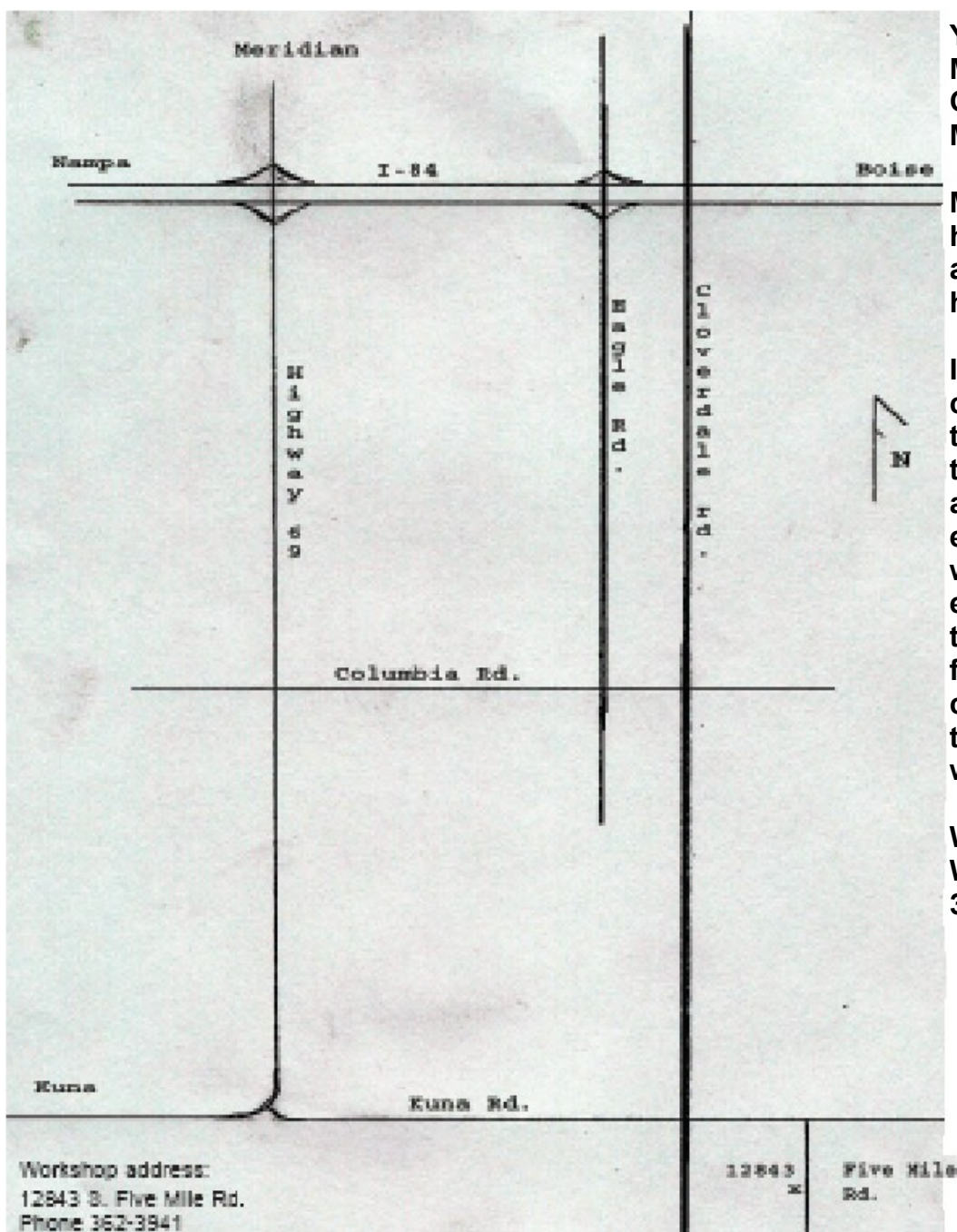
come one, come all to 12843 S Five Mile Rd.

You will need to get here off of Meridian and Kuna Rd. or Cloverdale and Kuna Rd. as Five Mile dead ends and starts again.

Marge Conley will be here to help you with the wire wrapping and there will be instructors to help with the cab making.

If you have a slab to make your cab out of feel free to bring it, there will be some material there to choose from if you don't have any. For those of you who have extra material, the workshop always needs donations so that everyone who comes has something nice to cut and chose from. Remember there is a charge for the wire wrapping but the workshop is free. I look forward to seeing you all.

Willa Renken  
Workshop Chairman  
362-3941





**The purpose of the Idaho Gem Club is to promote mutual, educational and scientific interests and benefits of its members in mineralogy, geology, gemology, the art of lapidary and kindred arts and sciences.**

**Dues:**

.....\$17.00 per person  
 .....\$20.00 per couple  
 .....\$23.00 per family

**Subscription:**

.....\$10.00 per year

**General Meeting:**

.....3rd. Tuesday of each  
 .....Month at 7:30 p.m.

USTICK	
<div data-bbox="805 235 928 285" data-label="Image"> </div> <div data-bbox="657 285 956 384" data-label="Text"> <p>Mountain View Church of the Brethren 2823 N. Cole Road</p> </div>	COLE
NORTHVIEW	
FAIRVIEW	



**The Whangdoodle Bird**  
 (Often seen on field trips)



**Idaho Gem Club, Inc.**

P.O. Box 8443  
 Boise, Idaho 83707-2443

