


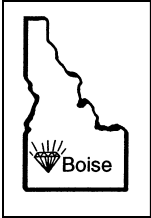
Grindings

Idaho Gem Club, Inc.

P.O. Box 8443  Boise, Idaho 83707-2443

VOL 73 NO 2

February 2013



BOARD OF DIRECTORS

Brent Stewart
President
863-9336

Willa Renken
1st Vice President
362-3941

2nd Vice President
Phil Neuhoff
939-4508
Ed Moser
340-8060
Jim Clinton
283-8891

Deana Ashton
794-5628

Melodee Worley
322-5985

Phillip Worley
322-5985

Barb Carey
435-282-0061



SECRETARY
Melodee Worley
322-5985

TREASURER
Kathy Griffin
467-9286

NFMS DIRECTOR
Charles McCreath
344-5085

EDITOR
Tony Griffin
467-9286
highdesert2003@q.com

CLUB WEB SITE
www.idahogemclub.com

President's Message

Thank you to the Banquet Committee for their work! The January Banquet was a wonderful evening with good food and enjoyable company. Thank you to Eugene Stewart for being the MC yet once again. Eugene does a nice job and has been the Banquet MC for many years.

Our annual Gem, Mineral, Jewelry and Fossil Show is just around the corner. February 23-24, 2013. Hope to see everyone at the Expo Idaho Fairgrounds, and keep our fingers crossed for a record attendance.

We need ALL available help to set up and take down the show. Thursday, February 21st at 1:00 we will meet at Lock-A-Way Storage on 5246 W. Chinden Blvd in Garden City to load up everything for the show. Friday, February 22 at 8:00 am we will meet at the Expo Idaho at 5610 Glenwood, Boise to set up. Take down will begin shortly after 5:00 pm Sunday, February 24.

I'm down in Tucson and woke up to snow this morning, thought I was back home. It didn't take long for the snow to melt off and back to sunny skies but still a chill in the air. Until now we have had weather in the 70's and I have been in shorts. Lots of wonderful things to enjoy here at the gem show, and they have had great attendance. I hope that we also have a large attendance at our show in Boise.

The program for the February meeting will be Gene Stewart doing a presentation on setting up display cases, balancing items so they do not look too crowded, proper use of lighting, and other helpful tips.

Brent Stewart
President

If anyone has anymore tumbled rock and you are coming to our next General Meeting, please bring them with you. You can give them to Phil or Melodee Worley.

**MINUTES OF THE IDAHO GEM CLUB
GENERAL MEETING
January 15, 2013**

**74th Annual Banquet
of the Idaho Gem Club
January 15, 2013**

Our Master of Ceremonies is Mr. Gene Stewart. He welcomed everyone for the evening. He then introduced members at the Head Table, Brent and Gia Stewart, Phil and Christy Neu-hoff, Charles and Shirley McCreath, Alice Stewart, and Phillip and Melodee Worley.

The Invocation was given by Chris Blickfeldt.

Dinner commenced to be served at 7pm. A special "Thank You" to Dan and Marge Conley, for the special table favors. Gene asked The Warner's son Aaron, Jr. to come up to draw the lucky number for winners. The lucky number was #8.

While awaiting dinners to be served, Gene asked for Deana Ashton to update us on the License Plate Sales. Deana stated sales are still occurring and will do so for the next year. She gave information of how the moneys are spent: to geology for grades k-12; and lapidary funding. We need to reach our goal of 1000 this coming year. Keep in mind these plates can also be gotten as souvenirs; 378 have been sold in 2012. Our social media advertising is still being worked on.

Gene Stewart drew for two door prizes and winners received his Stewart Gem Shop business cards to collect their prizes at his shop.

Special congratulations were given to Charles and Shirley McCreath on their 58th Anniversary and to Roy and Patsy Bethel for their 67th Anniversary.

Gene also wanted to mention that he's always seeing a name in the "Grindings" of Shirley McCreath attending our Board Meetings and keeping a close eye on the elected members.

We had seven first-timers at our Banquet this evening.

Ed Moser was commended for his wonderful work with our Rocky Rattler members.

Gene proceeded to Introduce Past Presidents 1971 Patsy Bethel, 1976 Gene Stewart, 1997 Charles McCreath, 1998-99 Chris Blickfeldt, 2000-03 Willa Renken, 2004 Ron Ridenour, 2005 Marge Conley, 2006-08 Cathy Parsons, 2009 Tony Griffin (resigned July 09 and finished by Marge Conley), 2010 Jason Madsen, and 2011-12 Brent Stewart.

We had a moment of silence for members who passed in 2012 and early 2013. John Stillinger, Tej Howell life member, and Clarence Trebi-cock.

Gene announced the "Project of the Year" the winners were Brent Stewart and Ben Harju for their Star Garnet/Idaho Opal wire wrapped pendant. There wasn't a Junior's submission this year.

Special mention of Tony Griffin for his editing of the "Grindings".

Our grab bag contest closed with three winners, Cathy Parsons with 3000 bags, Ilse Schreiner with 600, and Lois McDonald with 250. I would like to add a special mention to some other members who sewed for us, Barb Carey had 173, Jean Marie McAvoy had 122, and Julie Mayer had 28. Thank you for all your hard work and help. We're hoping to see our winners at the next General Meeting on the 19th, so prizes can be awarded.

At this time Gene Stewart turned the General Meeting over to President Brent Stewart. A motion to accept the minutes as printed in the "Grindings" was made by Willa Renken and seconded by Twila Gallaher; the motion carried.

Secretaries report-- nothing available at this time.

Treasurer's report-- Kathy spoke of balances and disbursements. Her reports can be seen upon request.

(continued on page 3)

Brent gave an additional "Thank You" to Tony and Kathy Griffin for all their work in the club.

Federation report-- Charles spoke of dates changing. I've done some additional research to confirm his information. The 75th Anniversary Show is August 9th, 10th, 11th at the Butte Civic Center.

Field trip report-- Phil is looking into some trips and weather permitting we might be rock-hounding as early as March, but he'll keep the members advised.

Library report-- nothing new at this time.

Junior's report-- Ed is wanting to remind the Rocky Rattlers "TO BRING YOUR FOLDERS!!!" He also wanted to thank members for the recent donations of specimens given to the Rock Rattlers.

Display cases for this years show, please contact Tony Griffin (467-9286).

Phil Neuhoff asked for new volunteers for his refreshment committees. He will send names and phone information to our editor for the next newsletters.

Old business-- none.

New business-- Our upcoming show. February 23-24, 2013. Our Grab Bag Stuffing will be held January 19th, from 9-11am, at the Church.

A very special "Thank You" to the Ron & Jean Dingley for the beautiful spheres for the sew-off prizes, and the Star Garnet pendant that was given by Brent for an additional sew-off prize.

Another special "Thank You" to Gena Stewart-Grissom for her behind the scenes help with Brent and Gene Stewart.

Gene presented Brent with a hammer as a special gift.

Lifetime members were recognized, Roy & Patsy Bethel, Chris & Peggy Blickfeldt, Charles & Shirley McCreath, Charlie & Helen Smith,

Marion Phillips, Betty Trebickock, Mattie Clay, Al & Hilda Larson, Gene & Alice Stewart, Marge Conley, Lynne Davis, and Mike & Sue Witschen.

The Installation of Officers occurred: President Brent Stewart, 1st Vice President Willa Renken, 2nd Vice President Phil Neuhoff, Secretary Melodee Worley, Treasurer Kathy Griffin, Federation Director Charles McCreath, Librarian Melodee Worley, and Historian Patsy Bethel.

The Installation of Boards members occurred: Board of Directors are Brent Stewart, Willa Renken, Phil Neuhoff, Ed Moser, Melodee Worley, Phil Worley, and Deana Ashton. Also sworn in but not present for the evening were Barb Carey and Jim Clinton.

Thanks to our Banquet Committee Jim DaSilva and Charles and Shirley McCreath, and Marge and Dan Conley.

Gene asked for all past presidents that were present this evening to come forward to have pictures taken.

Gene Stewart also presented Brent with the Presidents Opal and Jade Gavel.

Goodnight and let's go to Vegas!!

*Respectfully submitted,
Melodee Worley - Secretary*

Two links for additional newsletters we receive as members of the rock club.

NFMS—Newsletter available at:

http://www.amfed.org/nfms/documents/NorthwestNewsletter/NW01_0213.PDF

AFMS—<http://amfed.org/news/default.htm>

**MINUTES OF THE IDAHO GEM CLUB
Board Meeting
February 5, 2013**

The meeting was called to order by 1st Vice President Willa Renken at 7:30pm, due to President Brent Stewart being out of town. Board members present were Willa Renken, Ed Moser, Phil Worley, Melodee Worley, Barb Carey, Jim Clinton, and Deana Ashton. Phil Neuhooff was excused for the evening. Officers present were Melodee Worley and Charles McCreath. Kathy Griffin was excused for the evening.

Guests present were Shirley McCreath, Doug Renken, and Aaron and Barbara Wanner; motion to accept the minutes as printed in the "Grindings" was by Phil Worley and seconded by Ed Moser, the motion carried.

Secretary report-- just wanting refreshment committee to know I've got the club's coffeepot and supply box, I also have a few door prizes.

Treasurer's report-- it was given to Willa by Tony Griffin. Willa spoke of balances and disbursements. Barbara Wanner spoke to Brent about taking over the Treasurer's duties, and Willa has agreed to help with the transition.

Federation report-- Charles McCreath mentioned the NFMS 75th Anniversary Show; Butte, MT - August 9th, 10th, & 11th, 2013 Location: Butte Civic Center, 1340 Harrison Avenue, Butte, MT 59701

Charles is also willing to get members the newest directory for a fee of \$10, just let Charles know. The American Federation will have eight door prizes this year again. Contact Chris Blickfeldt (345-8774) for information and cost, be sure to pay with personal check.

Juniors report--"BRING YOUR FOLDERS" !!!! Ed is also looking for interested Rocky Rattlers to do display cases for this years show.

Contact Tony Griffin to reserve display cases for our Annual Show. Be aware you need to provide your own lock for your case, please bring a clasp or lock to secure the glass from

inadvertently falling open and breaking. See note on bottom of page 5 for more information.

Charles Smith is handling the postcards for patrons to fill out to be notified of next years Annual Show dates. After this years show we'll need a new "Blacklight Room" chairman.

Help for the show cases and tables that we store at Lockaway Storage will be needed on Thursday the 21st at 1pm; anyone with trucks and trailers your help will be needed if you can make it. Set up will be Friday the 22nd starting at 8 am till we're done; tear-down will happen on Sunday the 24th at 5pm till we're done.

We have numerous jobs and sign-up sheets for helpers at our show; those will be available at our next General meeting on February 19. Sign-ups for Greeters/Ticket Sales (both Sat & Sun), Host/Hostess table, the numerous kids' activities, our Silent Auction, and Dick Corbett is looking for volunteers to help him sell t-shirts and sweatshirts.

License plates report--nothing new.

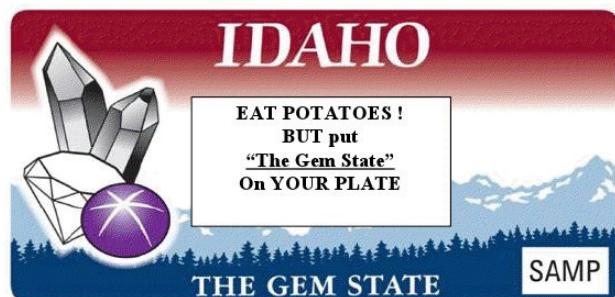
New business--none.

New member's applications-- one new application; motion to accept made by Ed Moser and seconded by Barb Carey; the motion carried.

Meeting was adjourned at 8:50pm.

*Respectfully submitted,
Melodee Worley - Secretary*

February Program:
will be a demonstration on how to
set up an effective display case in
preparation for the club show on
February 23rd and 24th.



Purchase the Earth Science/Lapidary Special Interest License plate for your Vehicle or RV At your local Idaho DMV or online ! Current registration credited towards purchase. Proceeds benefit Idaho K-12 Earth Science Education.

NOTICE: If you put in a show case please securely affix a padlock or carabineer. If you don't secure your case front and it falls and breaks you will be financially responsible for replacing it and the club Board will be sending you the bill. Thank you the board felt this might help to prevent the continued breakage of glass doors we are experiencing.

Thanks, the Idaho Gem Club Board of Directors

DO YOU REALIZE THAT OUR SHOW IS ONLY TWO WEEKS AWAY?

It's not too late to be making items for our show -

**Wheel of Fortune
Silent Auction
Grab Bags
Garnet Dig
Door Prizes**

**Idaho Gem Club Show
February 22nd & 23rd
2013**

**Expo Idaho (Western
Idaho Fairgrounds)
5610 Glenwood,
Boise, Idaho
Chinden & Glenwood**

HAPPY



BIRTHDAY

FEBRUARY

2/1 Charles Osgood
 2/1 Maria Snyder
 2/3 Winnie Snowball
 2/4 Andrew Davies
 2/10/39 The Idaho Gem Club
 2/10 Kim Williams
 2/10 Hailey Madsen
 2/11 Rick Corbett
 2/11 John Skene
 2/11 Jim Storey
 2/13 Kensie Luercher
 2/13 Terry Potter
 2/14 Betty Metzger
 2/16 Kylee Madsen
 2/16 Shawn Blades
 2/18 Justin Seaman
 2/20 Jackson Neuhoff
 2/22 Aaron Wanner
 2/23 Jim Clinton
 2/24 Ken Woodbridge
 2/25 Deanna Moser
 2/26 Joseph Miles
 2/26 Rodney Sharp
 2/26 Erin Seaman

February Birthstones
 Faceted — Amethyst
 Cabochon — Onyx

MARCH

3/5 Gene Alvey
 3/6 Jean Dingley
 3/6 Jason Madsen
 3/6 William Seaman
 3/7 Judy Blodgett
 3/7 Ronald Dingley
 3/13 Barbara Wanner
 3/15 Hannah Chase
 3/15 Dave Webster
 3/16 Kyle Thornock
 3/17 Aaron Chase
 3/18 Vicki Bickford
 3/18 Ivy Gomm
 3/19 Eve Gimmel
 3/19 Tanra Snodgrass
 3/20 Evea Jackson
 3/22 Andrew Housh
 3/28 Edward Blondin
 3/28 Larry Friend
 3/28 Gene Stewart
 3/28 Jacque Yandle
 3/29 Roger Coates
 3/30 Diana Harshman
 3/30 Heather Madsen

March Birthstones
 Faceted - Aquamarine
 Cabochon - Bloodstone

Dates To Remember**GENERAL MEETING**

3rd. Tuesday of every month

February 19, 2013

Church of the Brethren

2823 N. Cole Road, Boise, Idaho

Meeting Starts at 7:30 p.m.

BOARD MEETING:

1st. Tuesday of every month

March 5, 2012

Church of the Brethren

2823 N. Cole Road, Boise, Idaho

Meeting Starts at 7:30 p.m.

February Refreshments

Chair: Kathy Griffin
Dana Robinson 343-0487
Marge Conley 375-8935
Jean Dingley 377-2713

REFRESHMENT COMMITTEE GUIDELINES

Need approximately 15 dozen cookies.

Wrapped door prizes are also needed.

Arrive early enough to set up the chairs. The chairperson brings the coffee urn, coffee, punch, cream, sugar, cups and napkins.

Afterward, put meeting tables & chairs away, clean kitchen and sweep the room. Gather and take all the trash with you. Don't forget it is the responsibility of the chair for the coming month to pick up the coffeepot, take it home and bring it the next meeting.

March Refreshments

Chair: Deana Ashton 794-5628
Mike Dimick 938-2910
Brent Stewart 863-9336

THE GRINDINGS

is the monthly newsletter of the Idaho Gem Club, Inc., associated with the Northwest Federation of Mineralogical Societies. Permission to copy is freely granted when proper credit is given to both the publication and the author. Articles without bylines are written by the Editor or President.

CHECK OUT THE CLUB WEBSITE!

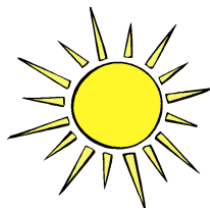
www.idahogemclub.com



Deana Ashton is our Sunshine Lady

Her job is to send some cheer to members who are ill, in need of prayers, or need some cheering up. Deana needs your help in accomplishing this, you can help by letting her know of anyone that is in need of a little sunshine. Deana will send a card or flowers depending on their situation or occasion.

Deana's phone number is 794-5628



Our condolences to John Brookman in the loss of his spouse Lorraine Brookman. Lorraine passed on during the Christmas season this past December. Our prayers and thoughts are with you John!

Yester Year
March 1970

The assessment work was done at the Whangdoodle. Thank you letters were written to all out of town individuals who exhibited at our show.

A measure to purchase a trailer from Clarence Bryant for \$35.00 to store display cases and other show equipment passed.

Our secretary Lillian Hood was in the Hospital recovering from a heart attack. Dudley

Stewart donated a six ray star garnet for the prize at the annual Gem Show, The next field trip will be to Beacon Hill.

Anyone interested in a 3 day trip to Red Canyon, in the Owyhees contact the BLM. It will be June 21, 22, and 23, there will be a charge of \$15.00 for the head of the family and less for the other family members. This includes 6 meals.

The Club added a new book to it's library, "The Art of Gem Cutting."

The July and August meetings will be held in the Municipal Park. The July meeting will be followed by a gem auction.

The July meeting did not have a regular business meeting.

A minute of silence was requested by 2nd VP Patsy Bethel, in honor of our President Clarence Bryant who passed away July 11, 1970.

There was no swap table..

In Loving Memory
Patsy Bethel - Historian



Bench Tips

BENCH SHEARS

When cutting sheet metal, it's quicker and easier to use a set of shop shears as compared with using a hand saw. The cut is not as precise, but many times you don't need that. Shears will easily cut up to 24 gauge sheet, and some will cut 22 or even 20 gauge.

Current prices for shears run from \$13 - \$22 in jewelry catalogs, and the Joyce Chen scissors recommended on some jewelry blogs run more than \$20. But we found a cheaper alternative at the 99 Cent Store—some gardening utility scissors that were only \$1.07

I buy a half dozen of them at a time for use in my jewelry classes. They're great for cutting bezels, trimming around a bezel cup, and cutting a piece off a larger sheet.

BEZEL CLOSER

A bezel closer is a steel punch that makes quick work out of pushing the metal down over a round stone and burnishing it. The working end is a concave cavity that fits over your bezel or prong setting and is pushed and twisted to capture the stone. Sets can be purchased but are expensive and contain many sizes you will probably never use. If all you need is one or two sizes, here's how you can make them yourself.

Find a good quality, round steel rod a little larger in diameter than your bezel cup or prong setting. Cut a 5 inch length. File both ends flat. Locate the center of one end, center punch a divot, and drill a small pilot hole about 5 mm deep. Remember to use a little oil as lubricant when cutting steel.

Select a ball bur a bit smaller than the steel rod but slightly larger than the bezel. Enlarge the pilot hole to a full hemispherical cavity. Test for proper fit with your bezel. Bezel should first contact the cavity about a third of the way in. When the size is correct, polish the cavity using Zam on a length of chopstick in your flexshaft. If the tool is not polished, it will leave scratches on your bezel or prongs.

When using the tool, the first step is to capture the stone correctly. I usually work by hand and push the punch straight down over the bezel or prongs. This causes the metal to start bending over the stone. Now inspect with a lens to be sure the stone is staying level. This is repeated until the stone is seated on its bearing and can't move anymore.

Next, you want to force the metal down onto the stone uniformly all the way around. While this can be done by hand, I often gently tap the punch with a hammer. Finally, I burnish the bezel by twisting the punch around.

Attribution requested with each publication:

More Bench Tips by Brad Smith are at [facebook.com/BenchTips/](https://www.facebook.com/BenchTips/) or see the book "Bench Tips for Jewelry Making" on Amazon

Start off the year at our annual Rock Show
Two more the two following weekends:

Owyhee Gem & Mineral Society

58th Annual Rock & Gem Show

Location: O'Conner Field House Canyon Co.
Fairgrounds 2200 Blaine Caldwell, Idaho

Dates: Saturday March 2nd, 2013 from 9am
- 6pm Sunday March 3rd, 2013 from 10am -
5pm

Magic Valley Gem Club

62nd Annual Rock & Gem Show

Location: Twin Falls County Fairgrounds in
Filer, ID

Dates: Saturday, March 9, 2013 from 9:00
a.m.-6:00p.m. Sunday, March 10, 2013 from
9:00 a.m. - 5:00 p.m.

Lot's of other good things going on throughout
Idaho and Oregon

Idaho Falls Mineral Society

Annual Rock Show

April 13th 10am — 6pm

April 14th 10am—5pm

Idaho Falls Recreation Center

530 Memorial Dr.

Idaho Falls, Idaho

Madras POW POW

June 26th—June 30th

Jefferson County Fairgrounds

Madras, Oregon

www.allrockhoundspowwowclubofamerica.com/
#!madras-flyer

Nyssa Thunderegg Days

<http://www.nyssachamber.com/>

2013 schedule not yet available

Nyssa School Grounds,

Nyssa, Oregon

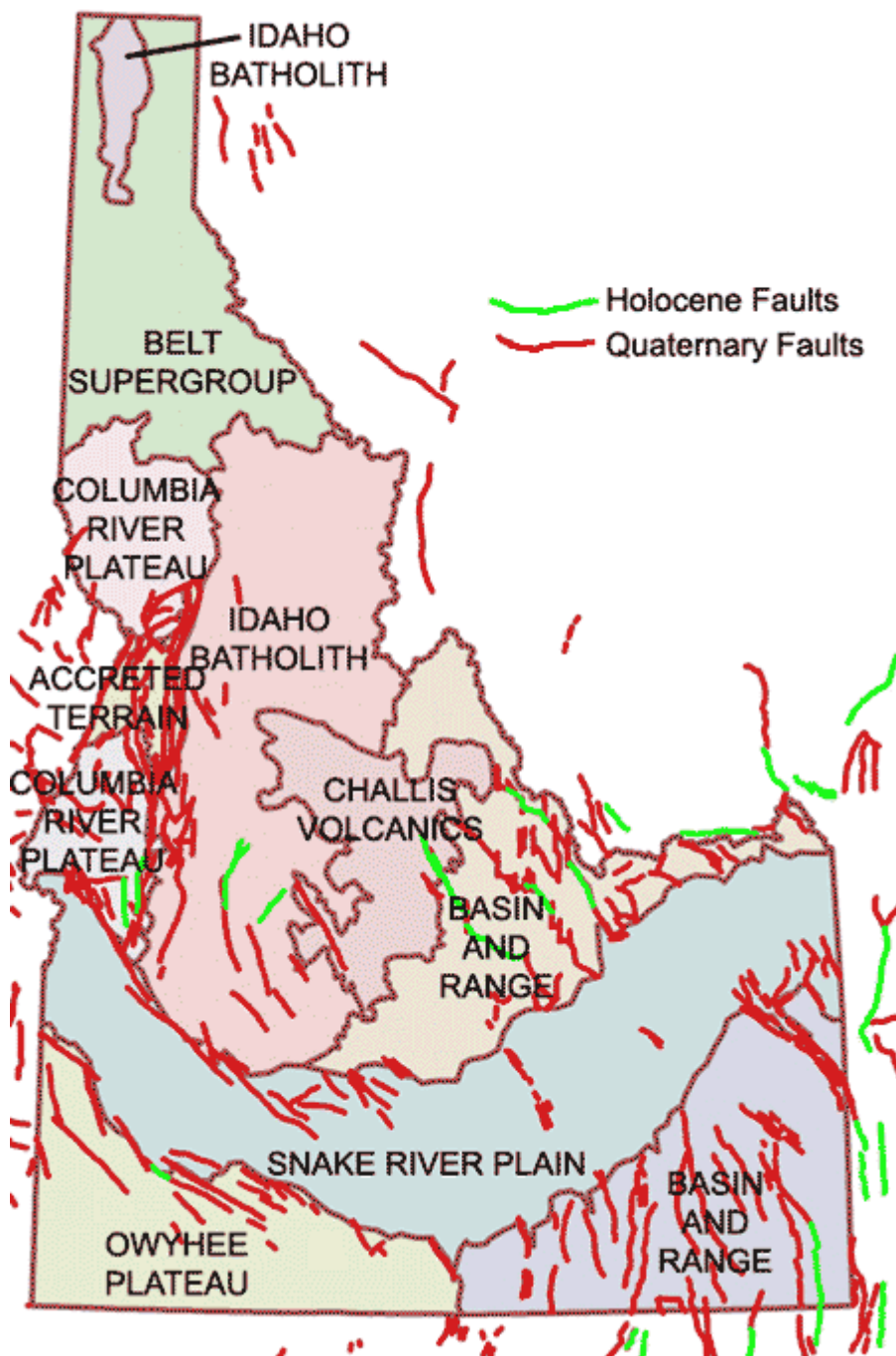
Digital Atlas of Idaho Geology: Active Faulting in Idaho Idaho's natural history online

<http://imnh.isu.edu/digitalatlas/teach/subfrm.htm>

Instructions: Use the information in the map to answer the following questions:

1. By looking at the map of Quaternary faults, identify the geologic province with the greatest number of faults that have been active over the past 2 million years. Faults represent potential pathways for groundwater to circulate deep into the earth's crust; faults that have been active in the recent past indicate a potential for earthquakes to originate by future movement on these faults.

2. The map of Holocene faults shows only those faults which have been active in the past 15,000 years (based on historical records and geologic characteristics such as scarps, broken ground, and stratigraphic offsets seen in trenches). Identify the geologic province that has the most neotectonically active faults.



Neotectonics is a subdiscipline of tectonics. It is the study of the motions and deformations of the Earth's crust (geological and geomorphological processes) which are current or recent in geologic time.^[1] The term may also refer to the motions/deformations in question themselves. The corresponding time frame is referred to as the neotectonic period. Accordingly, the preceding time is referred to as palaeotectonic period.

The Idaho Gem Club Presents a
Gem, Mineral & Fossil Show



February 23 & 24, 2013
Located at Expo Idaho
5610 GLENWOOD
Boise, Idaho

EXHIBITS of fluorescent minerals, gems,
fossils & one of a kind jewelry

Retail **DEALERS** of jewelry, gems and minerals

EDUCATIONAL DISPLAYS of gems, minerals and fossils

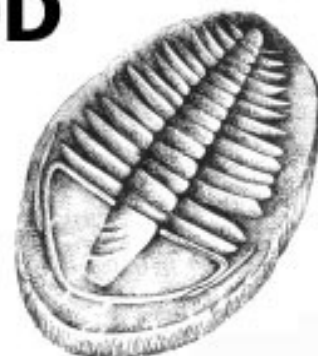
LAPIDARY DEMONSTRATIONS in the art of
cabochon cutting, faceting, lampwork beads &
the fabrication of silversmithing

Hours

Saturday: 10:00 am - 6:00 pm

Sunday: 10:00 am - 5:00 pm

ADMISSION: \$3.00 Adults
children 12 and under FREE



Display Case Application

Idaho Gem Club Annual Gem & Mineral Show

February 23 & 24 2013

Display Application

Name: _____ Phone: _____

Address: _____

Club Affiliation: _____

Type of material and/or type or kind of display: _____

Number of cases: _____

Borrow a case _____ Will provide own case _____

Size of your case: _____

Inside Dimensions of club cases are 46.5" wide by 22.5" deep by 22.5" high

(Please note: Loaned cases do not have liners -- you need to bring your own.)

Show dates: Saturday, 23 February and Sunday, 24 February, 2013

Set-up: 3:00 P.M. Friday, 22 February, 2013

A maximum of 150 watts of lighting will be provided per case. Security is provided around the clock. However, no responsibility will be assumed by the Idaho Gem Club, Inc.

Application deadline is: Saturday, 16 February 2013

Mail application directly to: Tony Griffin 208-467-9286 Or
4126 Apache Dr. highdesert2003@q.com
Nampa, ID 83686

The purpose of the Idaho Gem Club is to promote mutual, educational and scientific interests and benefits of its members in mineralogy, geology, gemology, the art of lapidary and kindred arts and sciences.

Dues:

.....\$17.00 per person
\$20.00 per couple
\$23.00 per family

Subscription:

.....\$10.00 per year

General Meeting:

.....3rd. Tuesday of each
Month at 7:30 p.m.

USTICK	C O L E
<div data-bbox="805 235 928 285" data-label="Image"> </div> <p>Mountain View Church of the Brethren 2823 N. Cole Road</p>	
NORTHVIEW	
FAIRVIEW	



The Whangdoodle Bird
 (Often seen on field trips)



Idaho Gem Club, Inc.

P.O. Box 8443
 Boise, Idaho 83707-2443

Happy Valentine's Day

[click here for full size image www.onlineatlantic.com](http://www.onlineatlantic.com)