


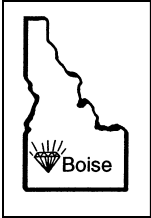
Grindings

Idaho Gem Club, Inc.

P.O. Box 8443  Boise, Idaho 83707-2443

VOL 73 NO 8

August 2013



BOARD OF DIRECTORS

Brent Stewart
President
863-9336

Willa Renken
1st Vice President
362-3941

2nd Vice President
Phil Neuhoff
939-4508

Ed Moser
340-8060

Jim Clinton
283-8891

Deana Ashton
794-5628

Melodee Worley
890-6834

Phillip Worley
891-3990

Barb Carey
906-5968



SECRETARY

Melodee Worley
322-5985

TREASURER
Barbara Wanner
794-9474

NFMS DIRECTOR
Charles McCreath
344-5085

EDITOR
Tony Griffin
467-9286

highdesert2003@q.com

CLUB WEB SITE
www.idahogemclub.com

President's Message

The hot long days of summer are here, along with all the fires and record-breaking heat. The garden is looking great and full of weeds...well, just pulled tons of them, just a never-ending task.

I would like to thank all of you who helped make our July picnic a great success. I would also like to thank those of you who generously donated rocks and other items for the auction. I am already looking forward to this month's picnic and auction. I would like to remind our new members that this is a great way to build your own collections. Food and company were fantastic, so remember to bring your favorite dish and table service. The Club will again provide the drinks and ice cream.

The August meeting will be just like the meeting in July same location, at the Old Timer's Shelter in Ann Morrison Park at 6:30 pm. The Old Timer's Shelter is off 9th Street and Royal Blvd. See you there and hope the weather cools off some, and the storms go elsewhere.

I enjoyed our last field trip to Dismal Swamp. Still found some great treasures despite the devastating fire from last year. Keep safety in mind at all times. Use a hammer or something other than your hand when turning over rocks. Snakes, scorpions, spiders, and other critters may be hiding under there to escape the heat... and just like people... they can be grumpy if their nap time is interrupted.

Our next club adventure will be to Hooker Creek for some petrified wood. I understand that you will find the wood plentiful. As always enjoy nature and stay safe and drink lots of water.

See you at the picnic,

Brent Stewart
President

**MINUTES OF THE IDAHO GEM CLUB
GENERAL MEETING
July 16, 2013**

President Brent Stewart called the meeting to order at 6:30pm.
The Blessing on the food was given by Mr. David Alley.
We enjoyed our potluck meal and fellowship with one another.
We had numerous guests present for the evening.
Junior door prizes were drawn for 11 winners.
Adult door prizes were drawn for 7 lucky winners.
Building fund had 3 lucky winners drawn.

Willa Renken made the motion to accept the minutes as printed in the "Grindings" it was seconded by Duane Mayer; the motion carried.

Secretaries report, I've received several bank statements, a few bills, and a newsletter from the Owyhee Club. For folks not able to make our field trip to Dismal Swamp. Larry Beattie, who is with the Owyhee Club, has contacted Phil about going to our Sunstone Claim in Oregon. Anyone interested in going with them, contact Larry Beattie at 208-466-6184, for additional details. Just another reminder of the Maplewood Rock & Gem Show happening on August 10-11, in Edmonds, WA. An email for contact is www.maplewoodrockclub.com. Some other events happening is their Annual Fall Show from Nov 9-10, and their Annual Winter Bazaar on Dec 7th.

Treasurers report, Barbara Wanner discussed balances and disbursements.

Federation report, Charles is currently collecting postage stamps to fund cancer research. The last time you can get them to him is at an upcoming board meeting, on August 6, starting at 7:30pm.
Juniors report, "BRING YOUR FOLDERS" to the September General Meeting. Its also going to be a study of "Sand Dollars". Each Junior will receive a sand dollar at that evening meeting.

Workshop report, Willa announced there will be a workshop on Thursday the 18th, time is 6:30pm-9:30pm. Marge Conley won't be present, but Dick Corbett will be there to help with wire

wrapping. Willa asked for volunteers to help new members with our machines. There will be a fire for anyone wanting to bring/make hot dogs and s'mores.

The auction was our program this evening.

Old Business/New Business there was none at this time.

Folks do remember that any money's taken in at our auctions help to offset our Annual Banquet, that occurs in January.

After a great thunderstorm and downpour, the meeting was adjourned at 8:45pm.

*Respectfully submitted,
Melodee Worley—Secretary*

**MINUTES OF THE IDAHO GEM CLUB
Board Meeting
August 6, 2013**

President Brent Stewart called the meeting to order at 7:30pm.

Board members present were Jim Clinton, Phil Worley, Melodee Worley, Barb Carey, Willa Renken, Phil Neuhooff, and Ed Moser. Deana Ashton was excused for the evening.

Officers present were Melodee Worley, Barbara Wanner, and Charles McCreath.

Recognized guest was Doug Renken.

A motion to accept the minutes as printed in the "Grindings" was made by Willa Renken and seconded by Barb Carey; the motion carried.

Secretaries report, I've received a letter from a company called UVTools letting us know of their recent improvements to an ultraviolet mineral kit they carry.

I've also received a letter from the "Friends of Mineralogy" about an upcoming symposium. Happening in Kelso, WA on October 11-13. Additional information can be gotten by contacting Bob Meyer at pyrite111@hotmail.com or Al Liebetrau at liebetrauam@msn.com.

I also received information from the Oregon Department of Energy in conjunction with the BLM about some proposed power lines and their path of construction. They are also working with federal,

(Board Meeting —continued on page 3)

(Board Meeting –continued from page 2)

state, and public lands. All 3 of these will be available to view by any member upon request.

Treasurers report, Barbara Wanner spoke of balances and disbursements. She also mentioned, she is starting to get deposits from vendors, for our Annual Show Rock & Gem Show which occurs in February of 2014. I passed along to her a bank statement, a bill from the florist, and a check for our license plate sales. Barbara stated she'd heard from Deana Ashton, that our website earthscienceplate.com is accessible. There are some things to fine tune, but it's getting there.

Pertaining to the license plates sales, Brent has been recently contacted by a state Senator about submitting a bill "to lower the number of plates we need to sell". Brent is going to look into assigning some people to a committee to work with the Senator.

We're thinking of providing elementary schools with colorful posters of rock specimens and maps that provide locations of where specimens can be found within the state of Idaho. Later we'll look into providing specimens kits, to teachers who request them.

We're going to be scheduling a date to address envelopes, for rock club members all around the state, to get the word out about purchasing our Earth Science plates. As soon as we get an electronic roster from the NFMS and confirm a date and time with the church we'll pass the information along. The date will be on a Saturday, just like we do for our Grab Bag stuffing.

Federation report, Charles spoke of his upcoming trip to Butte, MT. The Federation Show 2013 is from August 9-11. additional information can be viewed at www.amfed.org/nfms. The field trips that will be happening are Friday the 9th at 11am, hunting for Barite, on Saturday the 10th, they'll be going for leaf and insect Fossils, and on Sunday the 11th they'll be hunting for numerous specimens at Bald Mountain Skarn Deposit: some possible items to be found are diopside, grossular garnet, calcite (blue), vesuvianite, apatite (rare), and spinel (black/rare). It sounds like they've got something for everyone.

Juniors report, Ed wants the juniors "TO BRING THEIR FOLDERS" to the September meeting. Juniors will be studying and given "Sand Dollars"; Ed promises this study to be very exciting.

Workshop, Willa said there will be a work shop; she'll have additional information at this upcoming General Meeting, on the 20th of August, the work shop will be on the 22nd. From 6:30pm to 9:30pm.

Old Business, I (Melodee) brought to everyone's attention, a recent Owyhee Newsletter I'd read. The story that interested me was about Mary and Larry Ridley. We as a board having been knocking around the idea of getting our own trailers for storing our show materials. I was wondering why we couldn't invite Larry Ridley to join us a future board meeting and help answer questions about the trailers they use and useful information for us to make a future decision.

Barb Carey spoke again about the truck being offered to our club for free because we are a non-profit organization. The individual offering this is located in the Caldwell area. We will be keeping this option open, too.

Brent has talked with Jim DaSilva about continuing to be our committee chair for our Annual Banquet to be held in January 2014. Jim will have details about meal selection and tickets as we get closer to the banquet..

We had 1 new membership application. A motion to accept was made by Phil Worley and seconded by Barb Carey; the motion carried.

New Business, Ed was recently contacted by a previous member who is back in the area and was inquiring about the clubs Wang Doodle Claim. He was wanting to know about our mining practices, like using dynamite or heavy equipment; Ed advised him that our claim is strictly hand tools.

*Respectfully submitted,
Melodee Worley - Secretary*

Welcome New Members

Rose Alene and Orville McArthur,

3114 S. Glacier Bay Way

Meridian, ID 83642-7824.

208-827-6566

obm.rahrr@gmail.com.

Map To Picnic

The July and August meetings are both picnics. They will be held at the Old Timers Shelter at the East end of Ann Morrison Park. If you drive from 9th Street turn right on Royal Blvd. and shortly after entering the park turn into the parking lot on your right and you will see the shelter next to the River. If driving from the south turn left on Ann Morrison drive then turn right on Lusk St then left on Royal Blvd. and go to the parking lot. The picnic begins at 6:30 p.m. and is a potluck. Bring your favorite dish, plates, and silverware. The club will provide soft drinks and ice cream.



Bench Tips

FOREDOM MAINTENANCE

If you have a Foredom flexshaft, it makes sense to check it over every so often to be sure it's running properly. But how to do that? You've probably lost the little booklet that came with the unit. Well, being the good company it is, Foredom has put together an extensive set of videos on how to do it.

The series covers set-up, lubrication, replacing a sheath, motor maintenance, and handpiece maintenance. Few if any special tools are needed. You can watch the videos at ww.foredom.net/videolibrary.aspx and repair parts are available from most jewelry supply catalogs.

JUST A DROP

Hobby shops and model airplane stores carry small plastic dispenser bottles that are handy bench items for putting a drop of oil or glue just where you want it.

The small metal tubing lets you squeeze out very small drops and reach into tight places.

I use the small one on the left for oil when I'm sawing or drilling harder metals like steel. And I use the bottle on the right from a plastics store for the fast drying glues used to join pieces of acrylic.

SANDING BOARDS

The sanding boards for doing your nails are one of my favorite finishing tools. I use the ones with a thin foam core. They have enough resistance to sand just the high points off a flat surface and yet give a little when you're trying to smooth off a curved surface.

Plus they're inexpensive and come in a variety of grits. Some grits are so fine they give an almost finished surface. Pick up a few at a beauty supply company or at your local drug store.

Attribution requested with each publication:

More Bench Tips by Brad Smith are at

[facebook.com/BenchTips/](https://www.facebook.com/BenchTips/)

or see the book "Bench Tips for Jewelry Making" on Amazon

SHOP CARTS FOR SALE

Call for details

Ron Dingley

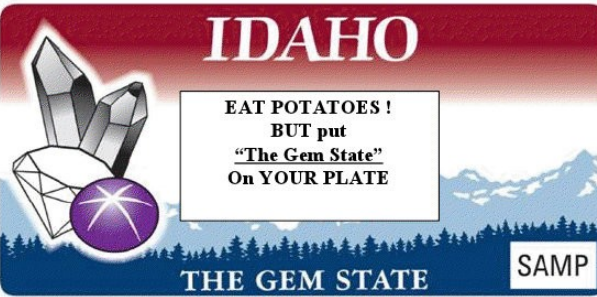
867-2912

EARTH SCIENCE AND LAPIDARY SPECIAL INTEREST PLATE:

Another new and exciting development and hope for saving our license plate from extinction, was joining forces with the Idaho Science Teachers Association President. We are composing a letter directly to teachers in Idaho, and he promises to get in their email boxes directly. He really values the concept and with over 4,000 science teachers statewide, we may just get lucky and sell the 1,000 plate minimum soon! I also plan on attending a Science Teacher Conference in Pocatello in the fall to speak and show the plate design and promote our program.

We are working on a promotional sticker for the back windows of cars sharing information about the plate. Hopefully we can make sure the text on sticker is large enough we don't end up with hazardous rear end crashes from motorists trying to read them! Pretty creative ideas...we have to try it all! Ask me for the business cards to pass out for anyone you know. We have plenty!

Thank you for supporting the Earth Science special interest plate!



IDAHO

EAT POTATOES !
BUT put
"The Gem State"
On YOUR PLATE

THE GEM STATE SAMP

Purchase the Earth Science/Lapidary Special Interest License plate for your Vehicle or RV
At your local Idaho DMV or online !
Current registration credited towards purchase.
Proceeds benefit Idaho K-12 Earth Science Education.

HAPPY



BIRTHDAY

AUGUST

8/1 David Alley
 8/1 Cody Jackson
 8/6 Michael Gartman
 8/6 Craig Kaumans
 8/7 Gene Thompson
 8/8 Charles Peterson
 8/10 Dan Conley
 8/10 Cindy Hicks
 8/11 Daniel Asp
 8/11 Corey Glick
 8/16 Carla Arnold
 8/16 David Snyder
 8/17 Chris Mangrum
 8/17 Gabriel Miles
 8/19 Salma Gomm
 8/22 Debbie Baldwin
 8/22 Betty Hare
 8/22 Pam Zimmer
 8/23 Chester Carpenter
 8/24 Frank Hederer
 8/24 Fred Hodges
 8/24 Walt Woodall
 8/26 Deana Ashton
 8/26 Nora Kreitzer
 8/27 Miers Johnson
 8/27 Christine Neuhoﬀ
 8/27 Linda Phillips
 8/28 Mettie Clay
 8/28 Leon K. Doar
 8/28 Misty Parker
 8/28 Carol Da Silva
 8/30 Erick Davies

August Birthstones
 Faceted – Peridot
 Cabochon — Jade or
 Sardonyx

SEPTEMBER

9/2 David Davies
 9/2 Bob Ruppert
 9/3 Donald Clark
 9/4 Roy Bethel
 9/5 Steve Hetherington
 9/7 Matthew Beatty
 9/7 Gavyn Coates
 9/7 Mike Doramus
 9/8 Dianna Piekma
 9/10 Rebecca Schuldenfre
 9/11 Sharon Surrarer
 9/12 Barb Carey
 9/12 Myrtle Trevithick
 9/12 Sue Witschen
 9/15 Ronald Mummey
 9/15 Celeste Jackson
 9/16 Dana Robinson
 9/16 Robin Solt
 9/16 Aaron Wanner Jr
 9/20 Annalies Clark
 9/20 Ray Harshman
 9/20 Clarence Trebilcock
 9/20 Randy Whipple
 9/21 Sanna White
 9/22 Carrie Kinnaird
 9/23 Terry L Dolton
 9/24 Melodee Worley
 9/25 John Davis
 9/27 Delorese Dewayne
 9/28 Annalies Clark
 9/30 Jessica Wilson

September Birthstones
 Faceted - Sapphire
 Cabochon - Lapis Lazuli

Dates To Remember**GENERAL MEETING**

3rd. Tuesday of every month
 August 20, 2013
 Old Timer's Shelter
 Ann Morrison Park
 Royal Blvd.
 Picnic starts at 6:30 p.m.

BOARD MEETING:

1st. Tuesday of every month
 September 3, 2013
 Church of the Brethren
 2823 N. Cole Road, Boise, Idaho
 Meeting Starts at 7:30 p.m.

August Refreshment Committee**August**

Chair: Aaron Wanner: 794-9474
 Brent Stewart 863-9336
 Phil Worley 890-6834

REFRESHMENT COMMITTEE GUIDELINES

1. Have tables covered with paper obtained from Statesman and ready by 6:00 p.m.
2. Bring door prizes
3. Order ice cream and arrange for pickup.
4. Serve ice cream

When picnic is finished, clear all paper from tables and deposit all litter and debris in trash containers

Potluck Dinner

Ice cream and sodas provided
 Bring your own plates and silverware
September Refreshment Committee

To be arranged!

THE GRINDINGS

is the monthly newsletter of the Idaho Gem Club, Inc., associated with the Northwest Federation of Mineralogical Societies. Permission to copy is freely granted when proper credit is given to both the publication and the author. Articles without bylines are written by the Editor or President.

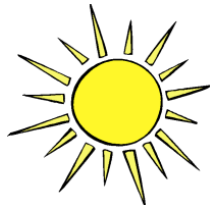
CHECK OUT THE CLUB WEBSITE!

www.idahogemclub.com



SUNSHINE LADY REPORT:

Please let me know if you are aware of any of our members having surgery, an illness, or just in need of cheer. We all can use some good cheer! We try and keep in touch with all our members, and I apologize if we have overlooked any member who has lost a loved one. Please let us know if we can help in any way. Contact Deana Ashton at 208-794-5628 or any Idaho Gem Club Board Member/officer.



As a Private duty Hospice Care provider, and I am more than willing to offer respite care to any families in need of a break caring for their loved one who is preparing to pass on. It would be my pleasure to help out a family caregiver while they go catch a movie, take some time alone, make arrangements, care or themselves, whatever they need. I encourage you to call Deana at 208-794-5628. I will gladly help if I can.

IF YOU WOULD LIKE TO ATTEND ANY GEM CLUB FUNCTIONS BUT ARE UNABLE TO DRIVE, CALL ME! WE WILL DO OUR BEST TO GET YOU THERE!

Deana- 208-794-5628

Special Project Stuffing Envelopes

Stuffing envelopes for our License Plate sales; this is to make other rock club members aware of the Earth Science License Plate and to hopefully increase their interest in purchasing these plates!

We have the church's fellowship hall on September 7 from 10 am till 2pm. This is the same location we have our monthly General Meeting when it is not at the park.

The address for this activity is the Church of the Brethren at 2823 N. Cole Road, Boise, Idaho

We hope to see lots of you there for a quick and needed activity!

YESTER YEAR

Dec. 1971

Clark Elwell has acquired 40 disc's for the school program and the committee is aiming for 100 which he thinks is possible.

The Program for the January dinner will be a talk by Al Teake, Secretary of the Idaho Mining Association. The Dinner will be \$2.50 at the Elks Lodge.

There will be no rock collecting or digging at Succor Creek between the North and South park road lines, and from rim to rim of the canyon. This also includes picking up of surface material.

The Board meeting in January the Treasure and all of the committee's gave their year end report.

The minutes of the previous Board were read and approved. Treasurer submitted a bill and gave his report. At this point the President adjourned the old Board and announced the new Board would take up the rest of the business. She thanked the outgoing members and welcomed the new board. She then called for nomination for the office of President. Glenn Burrows was nominated President and took over the gavel from Pat Bethel for the remainder of the meeting. 1st and 2nd Vice Presidents were nominated.

The club meeting was held at the Elks . The outgoing president brought the meeting to order. The invocation and dinner was served. George Fields took over as Master of Ceremonies. It was announced that the slide show was completed with the desired 100 discs.

The February field trip, weather permitting, would be to Shoo Fly Creek for fossils, an alternate trip would be to Succor Creek for leaf fossils. Ribbons were suggested for the show exhibitors. Article IV section 1 and 2 were revised.

*In Loving Memory
Patsy Bethel-Historian*

Idaho Gem Club Field Trip

The clubs trip to Dismal Swamp had a great turnout. We battled the clouds of dust for miles to uncover several Smokies. A good time!

This months field trip is on Saturday the 24th of August. We will met at the Gem Stop, west of Marsing, Idaho on Hwy 55 at 8:30am and leave around 9:00am for Hooker Creek for some petrified wood. Bring shovels, rock hammers, picks, sunscreen, water and a bucket for your specimens. We will be in Oregon, so you are aloud to bring home 25lbs plus one piece of petrified wood. So choose wisely. All vehicles are welcome, but high clearance is recommended, due to high grass. Snakes, ticks and scorpions are still out, so beware.

Happy Hounding
Phillip Worley
Field Trip Coordinator

August Program:

After the picnic, there will be an auction to support the cost of having the picnic. Please support the auction by bringing items that would be of interest to other club members (rough rock, finished pieces, used but working tools and equipment, books, etc). This is a great chance to obtain interesting material for your own collection...in the June auction many great deals were had on hard to find materials. Bid generously!

Federation & Other Club News More Dates to Remember

Owyhee Gem & Mineral Society
August 24th—Wagontown area—opalized wood and petrified wood.

September 3 - 9, 2012—OMSI camp at Hancock Field Station about halfway between Antelope and Fossil, Oregon. This is a week-long event of learning and sharing.

<http://www.amfed.org/nfms/NwRockHoundRetreat.asp>

Two links for additional newsletters we receive as members of the rock club.

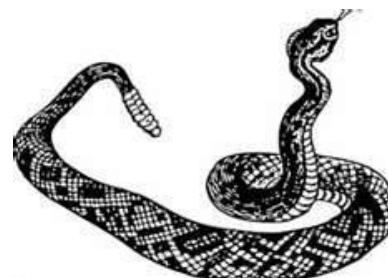
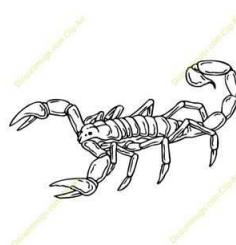
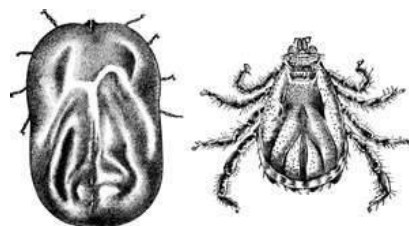
NFMS—Newsletter available at:

<http://www.amfed.org/nfms/newsletters.asp>

AFMS—<http://amfed.org/news/default.htm>

Watch out for these critters when you are rockhounding!

female & male tick



First Place to Look For Fraud, the No Action Alternative and Existing Condition:

These will be in the first two chapters. Easy to find these, use the word-search function in the PDF file of the EIS or EA. We have yet to see one with an honest No Action Alternative. When we challenge this with comments or appeals, the Forest Service throws back a blast of 'smoke and mirrors' about how they are allowed to choose what can be in the No Action Alternative. Once your appeal is rejected, the only way to fight this is to take them to court. We firmly believe they cannot manipulate NEPA regulations, but only a judge can decide that.

Deception in Action: The two largest forests in NM, the Santa Fe and the massive Gila (3.3 million acres) both used the same false No Action Alternative.

Their EIS's both say 'we chose to define the No Action Alternative as our best estimate of where people drive now.' Huh? This is like claiming a golf course has only 5 holes if only 5 holes are being played at 7 am on a Monday. The No Action Alternative and 'Existing Condition' are the sum total of roads and trails, NOT the agency's 'guess' about which ones get the most use.

Here's how this deception translates into legal points:

"First law-breaking: they made an illegal pre-NEPA decision to keep existing legal, SYSTEM roads out of the No Action Alternative. They are not allowed to make undisclosed decisions outside of the EIS/EA. If they chose only some roads and trails to be included, that obviously required some decision process for what to keep in and leave out.

"Second law-breaking: they do not present the true Existing Condition, as required.

"Third law-breaking: corrupt analysis. All the comparisons and conclusions in the EIS are false, because they are based on rigged numbers. (false analysis)

"Fourth law-breaking: hiding the true extent of closures from the public. (failure to disclose)

"Fifth law-breaking: Failure to analyze the true impact that the closures will have on the public and on the local economy (yes, those are required parts of the analysis. If they hide 30% of the closures, they have understated by 30% how much recreation is being lost.)

How bad was it? The Santa Fe excluded 23% of their OWN system roads, and the Gila excluded 27% of their own roads. I'm not talking about the so-called 'unauthorized' or user-created roads. I mean their OWN roads that are in their INFRA database and transportation atlases. And then they cut down from there in the alternatives.

Result: everywhere in their EIS's where the Santa Fe and Gila are comparing the alternatives, it's a lie. For example, they'll say an alternative leaves 60% of the roads open. But it is not really a 40% closure, it's more like a 65% closure that leaves only 35% open, because the NO Action Alternative is false, and rigged to be artificially low.

The even deeper deception: The Santa Fe claimed that 15% of the roads are not being used, and excluded 15% of all the system roads based on that. But in our digging in the project record, we found that the '15%' figure was based on one field survey of only 18 segments of ML-1 roads. (roads that are closed to the public, for administrative use only). In that field survey the roads engineer explicitly says that 15% is only a statistical calculation, and warns against using this figure across the forest. And what do they do? Exactly what the engineer said NOT to do. This ploy was used to eliminate over a thousand miles of roads. Which ones did they take out? Easy to see when you look at the maps. They closed roads near wilderness, roads near and in Inventoried roadless areas, roads that were the only route across large areas, and roads that were critical for connectivity. Not only did they close over 70% of the forest system roads, they closed them methodically

(Fraud — continued on page 10)

(Fraud—continued from page 9)

to butcher the network. Instead of loops, we have lots of unconnected dead ends off a few main routes. Do you think that was a coincidence? They have deliberately made travel in the forest difficult and inconvenient. They have also created large blocks of land with no motorized use allowed.

The Larger Plan: The massive road closures against motorized use in the Santa Fe National Forest are creating large areas where there is no motorized use. This is setting the stage for future expansions of wilderness designations and roadless areas. Travel Management closures are just Step 1 of an even bigger lock out. The Santa Fe NF started a 'reforestation' planning project last year. This object of this project is allegedly to improve forest health. It includes obliterating (destroying) roads. In other words, they are so anti-access that they immediately started pursuing road obliteration, before the Travel Management decision was even made! When we called "Foul" on them for this, they scrambled to backtrack and change the wording. But make no mistake, the long term plan is to remove roads from the land in order to inhibit and reduce where and how the public can access the forest lands. "How NEPA Works—The Very Short version" by Joanne Spivack—New Mexico Activist, reprinted from the ALAA Newsletter, Jan-Feb-Mar 2013; via

and <http://www.livescience.com/37977-underwater-cypress-forest-discovered.html>

Ancient Underwater Forest Much Older Than First Thought by Ben Raines, AL.com, March 17, 2013
<http://www.weather.com/news/ancient-underwater-forest-found-alabama-20130317>

Also, there is the underwater forest found beneath Lake Tahoe, California:

An underwater forest reveals the story of a historic mega-drought by Brendon Bosworth, High Country News.

<http://www.hcn.org/issues/44.22/underwater-forest-reveals-the-story-of-a-historic-megadrought>

Yours, Paul H.

Rockhound "CODE OF ETHICS"

I will respect both private and public property and will do no collecting on privately owned land without permission from the owner.

I will keep informed on all laws, regulations or rules governing collecting on public lands and will observe them.

I will, to the best of my ability, ascertain the boundary lines of property on which I plan to collect.

I will use no firearms or blasting material in collecting areas.

I will cause no willful damage to property of any kind such as fences, signs, buildings, etc.

I will leave all gates as found.

I will build fires only in designated or safe places and will be certain they are completely extinguished before leaving the area.

I will discard no burning material - matches, cigarettes, etc.

I will fill all excavation holes which may be dangerous to livestock.

I will not contaminate wells, creeks, or other water supplies.

I will cause no willful damage to collecting material and will take home only what I can reasonably use.

I will practice conservation and undertake to utilize fully and well the materials I have collected and will recycle my surplus for the pleasure and benefit of others.

I will support the rockhound project H.E.L.P (Help Eliminate Litter Please) and will leave all collecting areas devoid of litter, regardless of how found.

I will cooperate with field trip leaders and those in designated authority in all collecting areas.

I will report to my club or Federation officer, Bureau of Land Management or other authorities, any deposit of petrified wood or other materials on public lands which should be protected for the enjoyment of future generations for public educational and scientific purposes.

I will appreciate and protect our heritage of natural resources.

I will observe the "Golden Rule", I will use Good Outdoor Manners and will at all times conduct myself in a manner which will add to the stature and Public Image of Rockhounds everywhere.

Ancient Underwater Forest

Sent: Sun, Jul 14, 2013 8:24 pm

Subject: [PetrifiedWood] Ancient Underwater Forest Found Off Of Alabama Coast

Although the below fossil forest is not petrified, it is an example of how wood can become buried where might might, if the conditions are right, be silicified.

Ancient Underwater Forest: 50,000 Year-Old Swamp Discovered By Scuba Divers Off Alabama's Coast by Tia Ghose, LiveScience, July 9, 2013.

<http://www.huffingtonpost.com/2013/07/08/ancient-underwater-forest-discovered-alabama n 3562730.html>

Work shop Report for August— Are you ready to make a cab or two?

Remember these are for all members or guests. So be sure to bring that special person or child that you want to get interested in our hobby. Our next Workshop will be on Thursday, Aug 22nd, from 6:30pm to 9:30pm.

There will be a fire so if you want hotdogs and buns, please bring them, I will have the condiments. I have marshmallows and graham crackers for s'mores, but you would need to bring chocolate; so

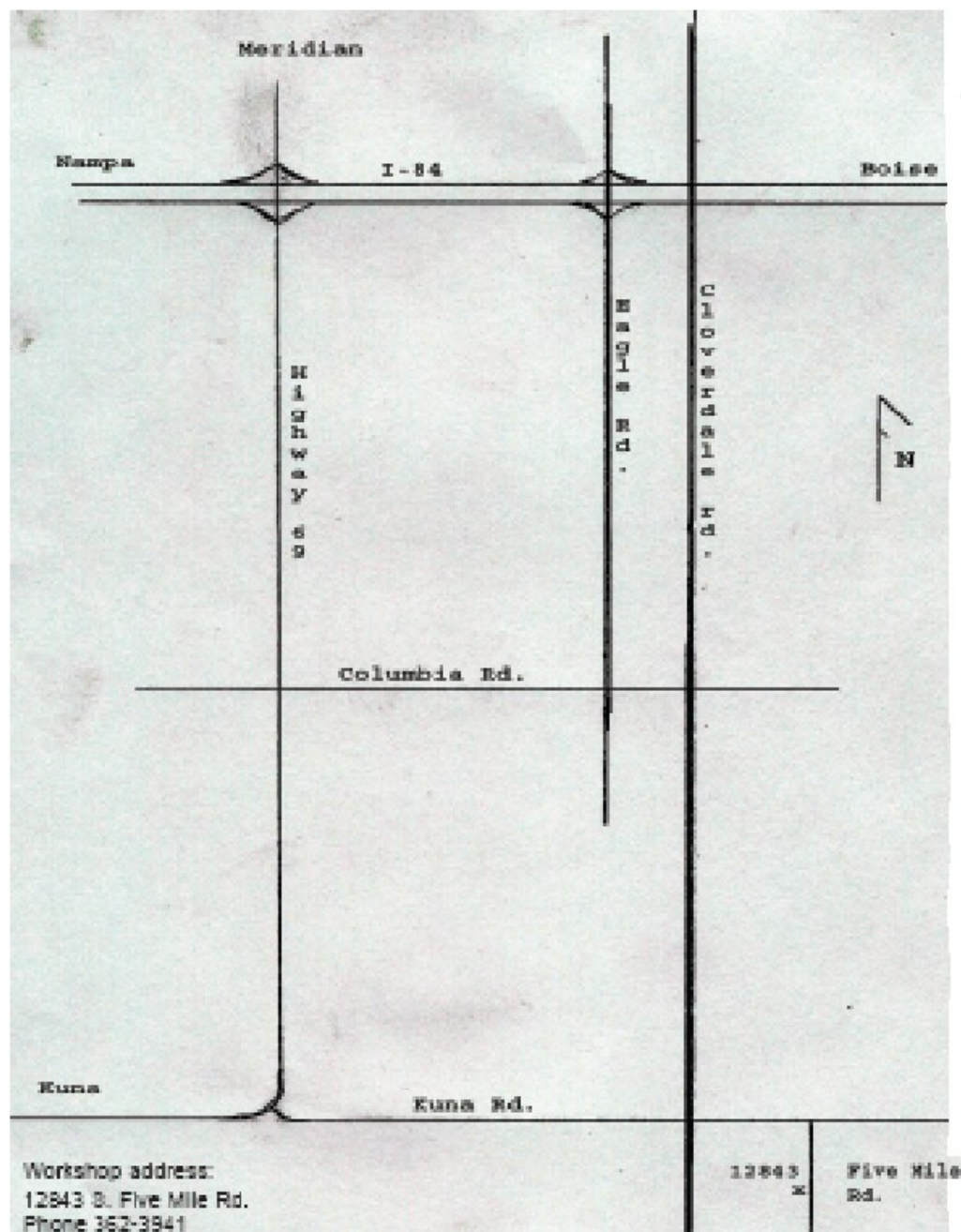
come one, come all to 12843 S Five Mile Rd.

You will need to get here off of Meridian and Kuna Rd. or Cloverdale and Kuna Rd. as Five Mile dead ends and starts again.

Dick Corbett will be here to help you with the wire wrapping and there will be instructors to help with the cab making.

If you have a slab to make your cab out of feel free to bring it, there will be some material there to choose from if you don't have any. For those of you who have extra material, the workshop always needs donations so that everyone who comes has something nice to cut and chose from. Remember there is a charge for the wire wrapping but the workshop is free. I look forward to seeing you all.

Willa Renken
Workshop Chairman
362-3941



The purpose of the Idaho Gem Club is to promote mutual, educational and scientific interests and benefits of its members in mineralogy, geology, gemology, the art of lapidary and kindred arts and sciences.

Dues:

.....\$17.00 per person
\$20.00 per couple
\$23.00 per family

Subscription:

.....\$10.00 per year

General Meeting:

.....3rd. Tuesday of each
Month at 7:30 p.m.

USTICK	C O L E
<div data-bbox="805 235 928 285" data-label="Image"> </div> <p>Mountain View Church of the Brethren 2823 N. Cole Road</p>	
NORTHVIEW	
FAIRVIEW	



The Whangdoodle Bird
 (Often seen on field trips)



Idaho Gem Club, Inc.

P.O. Box 8443
 Boise, Idaho 83707-2443