


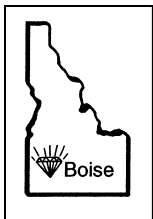
Grindings

Idaho Gem Club, Inc.

P.O. Box 8443  Boise, Idaho 83707-2443

VOL 72 NO 9

September 2012



BOARD OF DIRECTORS

Brent Stewart
President
863-9336

Willa Renken
1st Vice President
362-3941

2nd Vice President
Phil Neuhoﬀ
939-4508

Ed Moser
340-8060

Rick Corbett
383-9930

Deana Ashton
794-5628

Jim Clinton
283-8891

Phillip Worley
322-1812

Ben Nunez
853-6710



SECRETARY

Melodee Worley
322-1812

TREASURER
Kathy Griffin
467-9286

NFMS DIRECTOR
Charles McCreath
344-5085

EDITOR
Tony Griffin
467-9286
highdesert2003@q.com

CLUB WEB SITE
www.idahogemclub.com

President's Message

Fall is just around the corner and the Garnets in northern Idaho will just have to wait until next digging season. The workers up at the fee dig told me that they would be moving another mound of dirt over for the public so the pickings should be a lot better next summer. It is always nice to get up into the northern part of our state especially when the weather is so hot here in the valley.

Just a reminder that this months meeting will be at the usual spot on 2823 N. Cole Road at the Mountain View Church of the Brethren. The meeting time is 7:30 pm on September 18.

This month's field trip has been changed to Beacon Hill for agate nodules. You will find details inside this issue of the Grindings.

It is getting to be that time of year again to announce that Dues are due. One thing that members can do to help keep expenses of the club down is to have the Grinding sent to you electronically. Please give this some consideration and let Tony Griffin know if you would prefer the Grinding sent via email, instead of regular post. For the current year, dues will remain the same.

Gentle reminders to keep working on grab bags and tumbled rocks for the annual show in February. We sell out of them every year.

There will be some Board Member openings coming up for this next year, so for those of you interested, start getting your biographies ready.

Brent Stewart
President

**MINUTES OF THE IDAHO GEM CLUB
GENERAL MEETING
August 21, 2012**

President Brent Stewart called the meeting to order at 6:40pm.

Sandy Blodgett gave our blessing.

One guest present was Karen Butler, she has recently moved here from PA. and would like to join our Idaho Gem Club.

There were no new members present.

Adult door prizes were drawn for 14 lucky winners.

Kids door prizes were drawn for 5 winners.
Building Fund prizes for drawn for 2 winners.

The minutes were accepted as printed in the "Grindings" by Willa Renken and seconded by Cheryl Link.

Secretaries report- I received several pieces of mail: bank statements, returned mail, and a few bills for our treasurer.

Treasurers report- Kathy spoke of balances and disbursements. Anything concerning her report can be seen upon request.

Federation report- Charles spoke of the 2013 NFMS Annual Meeting in Butte, MT. He added: several great fieldtrips are scheduled for the Annual Meeting. All information will be available in the Northwest Newsletter.

Library report- I'll have 2 new Rock and Gem magazines available at our next general meeting on September 18th.

Workshop report- there will be no workshops for the months of August and September, Willa is hoping to resume workshops in October.

License plate report- Deana stated sales, renewals, and transfers are still occurring. She'll have more accurate numbers at the next general meeting.

No program was planned. An auction of numerous materials was held. The meeting adjourned shortly afterwards.

*Respectfully submitted,
Melodee Worley - Secretary*

**MINUTES OF THE IDAHO GEM CLUB
Board Meeting
September 4, 2012**

The meeting was called to order by President Brent Stewart at 7:33pm.

Board members present- Willa Renken, Phil Neuhoft, Ed Moser, Phil Worley, and Rick Corbett.
Jim Clinton, Deana Ashton were excused.

Officers present- Melodee Worley
Charles McCreath and Kathy Griffin were also excused.

Guest present was our Editor Tony Griffin, he also substituted for Kathy Griffin our treasurer.

Motion to accept the minutes as printed in the "Grindings" was by Willa Renken and seconded by Tony Griffin.

Secretaries report- there were several bills and other mail received. All was passed along to the Treasurer.

Treasurers report- Tony passed along a recent statement of balances and disbursements. Any of that information can be seen upon request.

Federation report- was given by Ed Moser who commented there are several new Officers in the NFMS. There was also news of an upcoming fieldtrip for thunderreggs. October 6&7 through the Springfield Thunderegg Rock Club, information is available in the newest NFMS, Northwest Newsletter.

Juniors report- Ed just wanted juniors to be sure to have their folders available for this next meeting on September 18.

There was no old business.

New business- Gene Alvey is wanting to advise the club, that the tumbler he has is needing a new liner and possibly gasket. He'll be advised to order what is needed and submit the bill to our Treasurer for reimbursement. We also discussed the possibility of future purchases of already tumbled rock for our future Grab Bags; Brent is going to look into pricing and quantities available.

The Garnet table has been finished by Jim Witt and he's submitted a bill of expenses for reimbursement.
(continued at top of next column)

Jim stated the Wheel of Fortune wheel is out of balance and in dire need of repairing. If anyone has the time to do so contact any Board member.

There were 4 new member applications. A motion to accept the new members was by Ed Moser and seconded by Phil Worley.

The meeting was adjourned at 8:35pm.

*Respectfully submitted,
Melodee Worley - Secretary*

Jewelry Tips

CLEANING SOLDER OUT OF A BEZEL

Sometimes when you solder a bezel to a base plate you end up with excess solder that needs to be removed before setting the stone. My choice of tool for this is called an "Inverse Cone" bur used in a rotary tool or flexshaft. It cuts on both the bottom and the side and is shaped so that there's less chance of cutting into the bezel wall than if you used the more common cylinder bur shape. The 2 mm size is useful for most any bezel.



FAUX SILVER

I'm fortunate to live in a big city that has frequent jewelry shows where I can buy supplies. But there are certain risks in buying at one of these events or from some of the online venues. Recently, a friend bought a package of 12 mm Sterling jump rings that became copper plated in the pickle. There was no sign of any steel contamination, so I tested them with a magnet to discover they were just plated steel.

I ran into a similar misrepresentation a couple years ago. I bought some "genuine" turquoise beads that I needed for 10mm cabs only to find they were a white magnetite that had been dyed.

Best solution is to carry a couple simple tools with you when you go to buy stones or findings. I usually carry a ten power loupe and a small vernier caliper to measure things. From now on, I'll also be carrying a small, strong magnet with me to test the findings.

(continued at top of next column)

Dealers are not necessarily the problem. Many have no idea their metals are plated. They were duped by their supplier. Regardless of who's to blame, I think it's worth reporting any problems you find to both the dealer and to the show promoter.

~~~~~

In addition, here's a story written up by a friend in my club. It was originally published in the Nugget, newsletter of the Culver City Rock & Mineral Club, Culver City, CA USA. The club shop is a small building with two doors that we usually keep open for ventilation. A friend of mine was working at the bench on a pendant/earrings set she had already sold to a client. Then as they say on the news programs "Something went terribly wrong". Here's her story. Enjoy !

### THE CROW

What a beautiful sunny day! To me this is the best incentive for creativity and so I pick up my silver and tools and go to the shop - I am going to realize my multi-stones pieces!

There, I find some more people cutting rocks and making cabs - it's always nice to share our work and ideas, and get a little distracted, including by that beautiful crow that just landed at our back door - he seems quite domesticated; he accepts food and doesn't fly away - OK, back to work!

And cut and assemble and solder and sand... ready for the drilling now... I pile all my pieces in front of me, the foredoom

ready to operate, the Optimiser on my eyes, and in few seconds I'll be ready to polish! Suddenly, here is the crow again - oh my, this time he enters the shop and lands right  
(continued on page 6)

**HAPPY****BIRTHDAY****SEPTEMBER**

9/2 David Davies  
 9/3 Donald Clark  
 9/4 Roy Bethel  
 9/5 Steve Hetherington  
 9/7 Matthew Beatty  
 9/7 Gavyn Coates  
 9/7 Mike Doramus  
 9/8 Dianna Pieksma  
 9/10 Rebecca  
 Schuldenfre  
 9/11 Sharon Surrarer  
 9/12 Barb Carey  
 9/12 Myrtle Trevithick  
 9/12 Sue Witschen  
 9/15 Ronald Mummey  
 9/15 Celeste Jackson  
 9/16 Dana Robinson  
 9/16 Robin Solt  
 9/16 Aaron Wanner Jr  
 9/20 Annalies Clark  
 9/20 Ray Harshman  
 9/20 Clarence Trebilcock  
 9/22 Carrie Kinnaird  
 9/23 Terry L Dolton  
 9/24 Melodee Worley  
 9/25 John Davis  
 9/27 Delorese Dewayne  
 9/28 Annalies Clark  
 9/30 Jessica Wilson

*September Birthstones*  
 Faceted - Sapphire  
 Cabochon - Lapis Lazuli

**OCTOBER**

10/4 Gina Gartman  
 10/5 Nicole Baron  
 10/6 Kevin Chase  
 10/8 Todd Jackson  
 10/9 Jo Thompson  
 10/9 Cindy Woolsey  
 10/14 Patricia Dailey  
 10/14 Rebekah Jackson  
 10/15 Dawn Schuldenfre  
 10/16 Ted Reynolds  
 10/21 Violet Gomm  
 10/22 Jim Dillion  
 10/22 Betty Trebilcock  
 10/22 Bryce Dethlefs  
 10/23 Colleen Lamansky  
 10/25 Karen Butler  
 10/26 Michael Baker  
 10/26 Lois McDonald  
 10/26 Christopher Griffin  
 10/26 Janelle  
 Wintersteen  
 10/28 Sue Clark  
 10/28 Allan Young  
 10/29 Sandy Johnson

*October Birthstones*  
 Faceted — Tourmaline  
 Cabochon — Opal

**Dates To Remember****GENERAL MEETING**

3rd. Tuesday of every month  
 September 18, 2012

Church of the Brethren  
 2823 N. Cole Road, Boise, Idaho  
 Meeting Starts at 7:30 p.m.

**BOARD MEETING:**

1st. Tuesday of every month  
 October 2, 2012

Church of the Brethren  
 2823 N. Cole Road, Boise, Idaho  
 Meeting Starts at 7:30 p.m.

**September Refreshment Committee**

**Chair: Pat Hobbs**  
**Barb Carey**  
**Christie Clinton**

**REFRESHMENT COMMITTEE GUIDELINES**

Need approximately 15 dozen cookies.

Wrapped door prizes are also needed.

Arrive early enough to set up the chairs. The chairperson brings the coffee urn, coffee, punch, cream, sugar, cups and napkins.

Afterward, put meeting tables & chairs away, clean kitchen and sweep the room. Gather and take all the trash with you. Don't forget it is the responsibility of the chair for the coming month to pick up the coffeepot, take it home and bring it the next meeting.

**October Refreshment Committee**

**To Be Arranged**

NFMS—Newsletter available at:

<http://www.amfed.org/nfms/nwnews/nw0812.pdf>

AFMS—Newsletter same as last months:

<http://amfed.org/news/default.htm>

**Save Stamps For Cancer Research**

Cut at least 1/4 inch margin around the stamps. You can turn them into Chuck McCreath at our next meeting. **THANK YOU!**

### Welcome New Members

Jennifer Bruner  
Nathan & Natalie  
602-8781  
2238 S. Tawny Woods Pl.  
Boise, Idaho 83706-4490

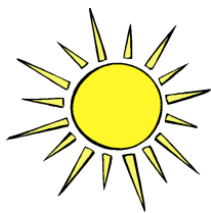
Ted Reynolds & Karen Butler  
973-997-6210  
615 S. Smeed Parkway  
Caldwell, Idaho 83605-8109

John Davis  
954-6335  
525 S. Cassandra Ave.  
Kuna, Idaho 83634-2369

Scott & Dawn Schuldenfre  
Rebecca & Gabriella  
922-6701  
385 E. Bridgewater Ct.  
Boise, Idaho 83706-6423

### September Program:

The program for September will be a discussion  
by Phil Neuhoﬀ on obsidian varieties.



Sunshine Lady or Gent

The Idaho Gem Club is in need of a  
Sunshine person!

This important position includes, but not limited to sending some cheer to club members that are ill, in the hospital, have had a death in the family, or are just need some "cheering up".

Sending cheer means sending a card or flowers whenever appropriate, letting the Club Board of Directors and editor know when someone is in need of Sunshine or has received Sunshine.

It is everyone's responsibility to help out the Sunshine Person make this position function properly. Without each of us helping we won't know who is in need of Sunshine. Please see a club officer to volunteer!

Many Thanks to Arlene Bailey for the wonderful job she has done over the years as our Sunshine Lady!

### YESTER YEAR

Sept. 1965

The field trip was to be a surprise and not announced until everyone showed up. Not very many people came to the starting point, but the ones that did went to Beacon Hill and they found good material. The next field trip would be to Hog Creek, depending the weather. It would be for iris agate and crystals.

The club was having financial problems and decided to raise dues instead of having a show.

At this time they can't get a bulldozer for the Whangdoodle claim.

The club had donated \$600.00 for the Rhodenbaugh collection at BJC. They checked on it and found the college expected to have the display up the first of the year.

It was moved and passed that the IGC have a show sometime after the first of the year. The dues were also raised from \$2.00 to \$3.00. Junior members would still pay \$1.00.

Because of the weather the November field trip was to Jennie Higby's Queenstone claim. Some found nice blue opal nodules.

Decision on where to have the monthly meeting were put off until after the holidays.

*In Loving Memory  
Patsy Bethel-Historian*

Two links for additional newsletters we  
receive as members of the rock club.

[http://www.amfed.org/afms\\_news.htm](http://www.amfed.org/afms_news.htm)

<http://www.amfed.org/nfms/>



(The Crow—continued from page 3)

on my bench and he just looks at me! Well, I can't resist. I start playing with him using my file and he picks up the end once, twice, and then he stops and looks at me... suddenly my blood freezes with fear: I know what he's going to do!

He takes a quick look at the pile of silver pieces, looks at me again and in a fraction of second, he grabs half of the pieces of jewelry and flies out! I cannot believe what just happened - I run after him and he is right next door on a telephone post - I am still in shock and try to telepathically convince the bird to drop my pieces down - then I get back to reality and I swear at him, and he starts having fun with me! He gently puts the jewelry down, screams at me three times, grabs the jewelry and moves up one step, and he does it again and again, until he flies away.

So, I was laughed at by a crow and left with three different sets of jewelry totally messed up - but you know what? Besides having amused everybody, I completed the jewelry, I went to my client, told the crow story, and sold all the pieces!

Look for fun in everything!

=====

Acknowledgement to be included with each publication:

More BenchTips by Brad Smith can be found at

facebook.com/BenchTips

or

groups.yahoo.com/group/

BenchTips/

## 2012 Idaho Gem Club Scholarship Forms Now Available!

The 2012 scholarship application form and instructions are now posted on the club website

(<http://www.idahogemclub.com>).

**Deadline for applications is September 30, 2012.** Please encourage any local earth science majors you know to apply!

## Rockhound "CODE OF ETHICS"

I will respect both private and public property and will do no collecting on privately owned land without permission from the owner.

I will keep informed on all laws, regulations or rules governing collecting on public lands and will observe them.

I will, to the best of my ability, ascertain the boundary lines of property on which I plan to collect.

I will use no firearms or blasting material in collecting areas.

I will cause no willful damage to property of any kind such as fences, signs, buildings, etc.

I will leave all gates as found.

I will build fires only in designated or safe places and will be certain they are completely extinguished before leaving the area.

I will discard no burning material - matches, cigarettes, etc.

I will fill all excavation holes which may be dangerous to livestock.

I will not contaminate wells, creeks, or other water supplies.

I will cause no willful damage to collecting material and will take home only what I can reasonably use.

I will practice conservation and undertake to utilize fully and well the materials I have collected and will recycle my surplus for the pleasure and benefit of others.

I will support the rockhound project H.E.L.P (Help Eliminate Litter Please) and will leave all collecting areas devoid of litter, regardless of how found.

I will cooperate with field trip leaders and those in designated authority in all collecting areas.

I will report to my club or Federation officer, Bureau of Land Management or other authorities, any deposit of petrified wood or other materials on public lands which should be protected for the enjoyment of future generations for public educational and scientific purposes.

I will appreciate and protect our heritage of natural resources.

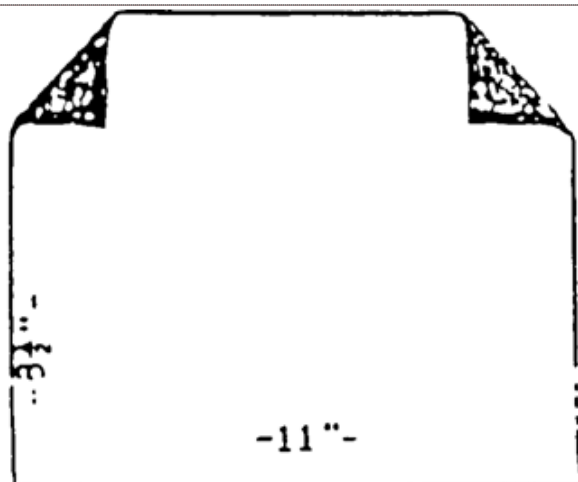
I will observe the "Golden Rule", I will use Good Outdoor Manners and will at all times conduct myself in a manner which will add to the stature and Public Image of Rockhounds everywhere.

## Easy Grab Bags for Grab Bag Contest

The easiest method of cutting out grab bags is to cut fabric into 8 1/2" strips. Press down 1/2" on the top edge of each strip. Fold strip in half and cut on fold (you'll have two 22 1/2 inch pieces. Cut each of those halves into two pieces (fold & cut on fold). Following the pattern, fold up the outer edges of the top hem and make the dog ears, and then place your draw-string under the hem (but over the "ears"). (I place a few pins in the edge of the hem to make sure it stays put before I sew. And, I sew each seam factory-style/chain stitching—not cutting between each bag, etc. So, if I cut out the 4 strips from the yard of fabric, I'm going to stitch down the top hem on all the bags before I go to the next step, etc.

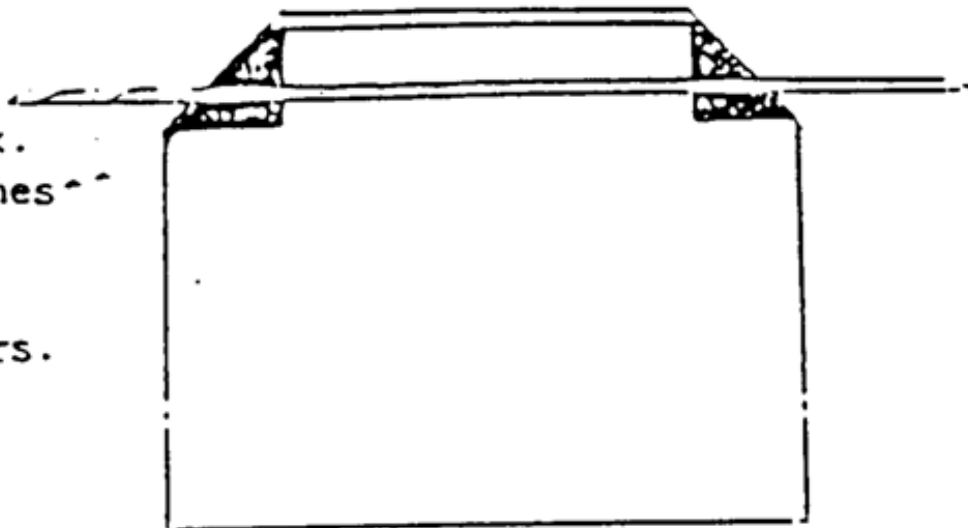
Time is saved by folding the two corners over diagonally, then folding The top down over the cord. Try it.

Fold over 1/2inch and crease. Lay cord in place.

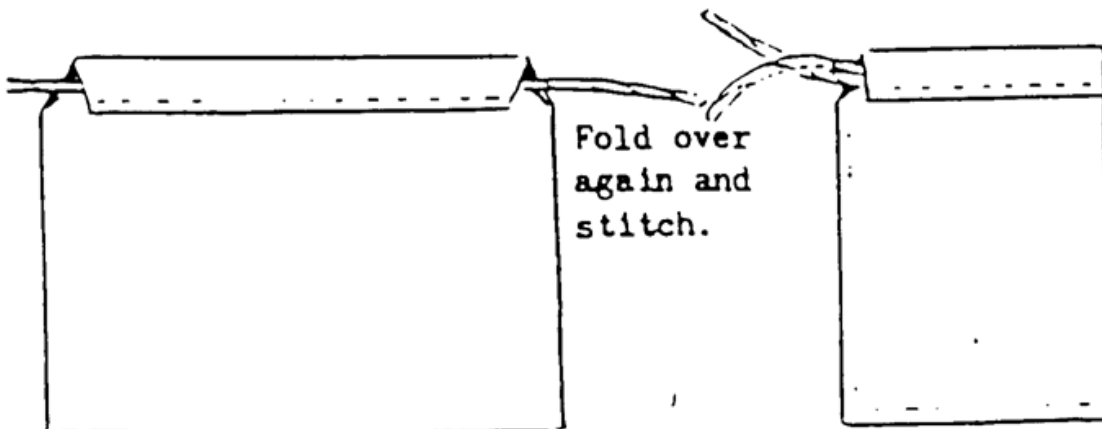


Approx.  
2 inches

Fold  
corners.  
over



Fold over  
again and  
stitch.



Fold in half. Stitch in  
across bottom and up  
side.

## Idaho Gem Club Field Trip Report

Hello fellow members and guest. Last months field trip to Succor Creek for thundereggs was very dry and hot, but lots of eggs were found by the 11 folks who participated.

Lots an Lots of fun.

This months field trip to Carey, Idaho has been canceled due to poor air quality, however, we will be taking a trip to our **Beacon Hill claim** instead.

I know how disappointed you all are, but we will go to Carey next season. Beacon Hill will be 22nd & 23rd September.

We will meet at the rest area off I84 just over the Oregon border at 8:00 am both days. Bring heavy digging tools, sun screen and a lunch for you or your group.

High clearance vehicles only, cars park at the bottom and bum a ride. Hope to see ya all there.

*Happy Hounding*

*Phillip Worley - Field Trip Coordinator*

## Federation & Other Club News More Dates to Remember

### Other Clubs Field Trips/Shows

Owyhee Gem & Mineral Society  
<http://www.owyheerocks.com/>

September 22—McDermitt, NV/OR  
For more information please attend meeting  
September 19th

Magic Valley Gem Club

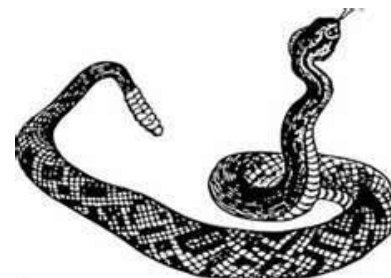
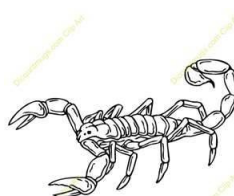
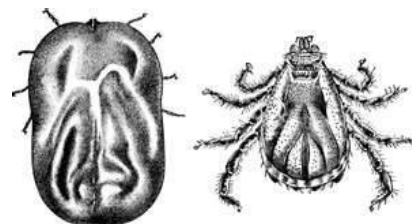
Sept 22-23 Carey  
Call DeVone Bates—837-4137

Oct. 5-6-7 Paradise Valley, McDermitt  
Call Tony Funk 539-5368 or  
Chris Sutton 543-5919

Eureka Rock & Gem Club Annual Show  
Oct 6—9 a.m. til 4 p.m.  
Senior Citizen Center—  
1000 N 3rd E; Mountain Home, ID  
Contact: Roger Beck 208-587-9374  
[westbeck@earthlink.net](mailto:westbeck@earthlink.net)

### Watch out for these critters when you are rockhounding!

Female & male tick



### THE GRINDINGS

is the monthly newsletter of the Idaho Gem Club, Inc., associated with the Northwest Federation of Mineralogical Societies. Permission to copy is freely granted when proper credit is given to both the publication and the author. Articles without bylines are written by the Editor or President.

CHECK OUT THE CLUB WEBSITE!

[www.idahogemclub.com](http://www.idahogemclub.com)





## No Workshop August or September!

### US Forest Service Meeting Highlights Malheur National Forests

I believe this information should go out to clubs, with interested clubs urged to review travel plans for Wallowa Whitman & Malheur National Forests where they have rockhounding activities. Then attend meetings and make our desire to keep roads and trails open for access to rockhounding sites. If we do not speak up and take part in meetings, rockhounds can easily be closed out of their favorite collecting sites. Many of the trails are for ATV use but a few rockhounds use their ATVs to reach favored sites.

Went to the Prairie City Ranger District, after the front desk asking what I was there for, I was told the district ranger was first out of the office, then in a meeting, then just maybe returning from a meeting, the story changed 3 times in less than 5 minutes.

Went to Malheur Supervisors office in John Day, asked for the Forest Supervisor, was asked what it was in regards to, was abruptly told she was in a meeting and directed to the Public Relations Staff person, Patti Hammett, very nice lady.

- 1) Malheur is in a "hold pattern" until later in the year.
- 2) Malheur plans on holding Public meetings sometime in January.
- 3) Malheur has no intention in closing any additional roads in their system.
- 4) I asked if the Malheur had a "preferred alternative" they currently were working on, and Patti assured me no, they wanted to talk to the public first.

5) During Malheur's public meetings they will discuss and work with the public on what roads they are currently using. If it is Identified through this process that the public is actively using a "closed road" under the current system, the Forest will move to rectify that situation by officially closing that road, even if it is currently being used as an "open road".

Patti was extremely nice to talk to, and willing to answer all my question. If you are in John Day or Prairie City, I highly recommend you stop in either office and ask what is going on with the Travel Management Plan (Closed forest plan).

Any question I'm more than happy to try to help with, get you pointed in the right direction, and get you hooked up with Forest Access For All or any of the other groups working on this issue.

**John George**  
Bates, Oregon

**Supervisors Office / Blue Mountain Ranger District**  
431 Patterson Bridge Rd  
Mailing: PO BOX 909  
John Day, OR 97845  
541-575-3000

**Emigrant Creek Ranger District**  
265 Highway 20 South  
Hines, OR 97738  
541-573-4300

**Prairie City Ranger District**  
327 SW Front St  
Mailing: PO BOX 337  
Prairie City, OR 97869  
541-820-3800

**Black Light Sale:** We will once again be selling multiband (SW, MW, LW) 4 watt ultraviolet lamps to support our scholarship fund. The cost of the package is \$95 and includes the light, batteries, case, magnetic extender pole, and a free sample of Terlingua-type calcite from Mexico that fluoresces different colors in each wavelength and also phosphoresces.

**The purpose of the Idaho Gem Club is to promote mutual, educational and scientific interests and benefits of its members in mineralogy, geology, gemology, the art of lapidary and kindred arts and sciences.**

**Dues:**

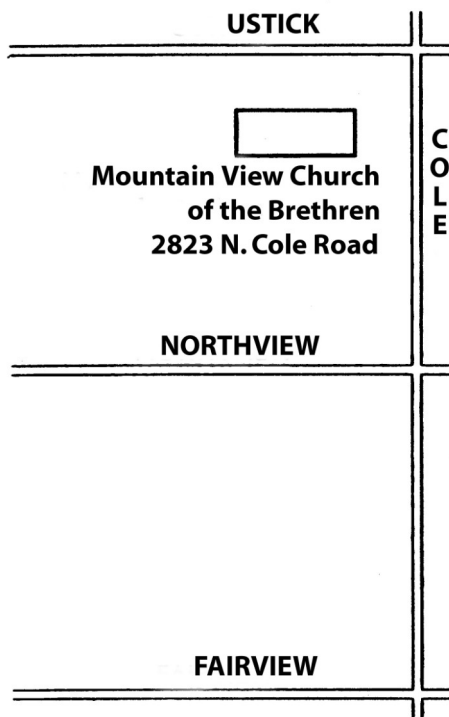
.....\$12.00 per person  
 .....\$15.00 per couple  
 .....\$17.50 per family

**Subscription:**

.....\$10.00 per year

**General Meeting:**

.....3rd. Tuesday of each  
 .....Month at 7:30 p.m.



**The Whangdoodle Bird**  
 (Often seen on field trips)



**Idaho Gem Club, Inc.**

P.O. Box 8443  
 Boise, Idaho 83707-2443