


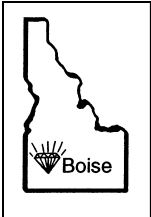
# Grindings

**Idaho Gem Club, Inc.**

P.O. Box 8443  Boise, Idaho 83707-2443

**VOL 72 NO 6**

**June 2012**



## **BOARD OF DIRECTORS**

**Brent Stewart**  
President  
863-9336

**Willa Renken**  
1st Vice President  
362-3941

**2nd Vice President**  
**Phil Neuhoff**  
939-4508

**Ed Moser**  
340-8060

**Rick Corbett**  
383-9930

**Deana Ashton**  
794-5628

**Jim Clinton**  
283-8891

**Phillip Worley**  
322-1812

**Ben Nunez**  
853-6710



## **SECRETARY**

**Melodee Worley**  
322-1812

**TREASURER**  
**Kathy Griffin**  
467-9286

**NFMS DIRECTOR**  
**Charles McCreath**  
344-5085

**EDITOR**  
**Tony Griffin**  
467-9286  
highdesert2003@q.com

**CLUB WEB SITE**  
www.idahogemclub.com

## President's Message

Be aware that with all the wet weather we have had the grass is taller and when it dries it doesn't take much to spark a fire with a hot catalytic converter, cigarettes or campfires. You might also find other critters hiding in the tall grasses. Last year we came across several rattlesnakes, they will usually avoid you unless they feel threatened. Please respect nature and think things through so you do not cause harm to yourself, others, or the great outdoors.

I would like to thank members of the club for their participation on our field trips; sounds like everyone is having a lot of fun and have been able to make new friends. If anyone knows of any places we haven't visited recently or are new finds and are willing to share, please contact me! Start making your plans to attend the Star Garnet Dig trip on August 25th –26th. This trip will be a wonderful adventure so plan on making this trip a fun working vacation.

Remember to be working on grab bags for our next gem show...there will be two NICE prizes given to the persons who make the most.

For the next several months we will be holding auctions at our monthly meetings. This is a great way for new members to start their collections. Remember to start gathering and bring items for the auction. Last years auctions were great and the money generated helped off set the cost for our annual banquet. Our club's success is because of you!

*Brent Stewart*  
*President*



## MINUTES OF THE IDAHO GEM CLUB GENERAL MEETING

May 15, 2012

President Brent Stewart called the meeting to order at 7:34pm.

Brent Stewart asked Ben Nunez to come forward then presented Ben with a check for \$500.00 to use to further his education. Ben Nunez is our recipient of the Idaho Gem Club Scholarship for 2012. Brent then asked if Ben would lead us in the Pledge of Allegiance.

Juniors report: Ed Moser spoke of the upcoming field-trip on June 26 and that additional information was available in the recent "Grindings".

Junior door prizes: there were 6 winners drawn.  
Adult door prizes: there were 38 winners drawn.  
Building fund: there were 3 winners drawn.

A motion to accept minutes as printed in the "Grindings" by Ed Moser and seconded by Barb Carey.

Guests present were Heather Taylor and her son Matthew.

Secretary report: there was mail received and several bank statements for our treasurer.

Federation report: nothing to report

Fieldtrip report: the last outing was to Wang Doodle and our next outing is Graveyard Point. We'll be meeting at the ION station outside of Marsing, ID. At 8 am and traveling at 8:30am. There is also an additional trip planned for June 2&3, for the Beacon Hill claim. Interested parties are to meet Phil Worley at the Ontario, OR rest area at 8 am for travel both days at 8:30 am. Collecting will be for Beacon Hill geodes.

Library report: the new Rock & Gem magazine is here and will be available for check out; the library will be open during refreshments.

Workshop report: Willa stated there will be a workshop on May 17 from 6:30pm to 9:30pm. She said a fire would be available for roasting hotdogs. Supplies needed are hotdogs, buns, and 'smores fixins'. Rock cutting for members will be at a fee and information will be disclosed in the future.

Willa also is wanting to remind members about a grab bag sewing contest. Two prizes are going to be awarded at our yearly banquet in January. Our editor Tony Griffin will be including the grab bag pattern in future "Grindings". Also keep those tumblers going for rock for the grab bags, for our next show.

Treasurers report: Kathy spoke of balances and dis-

bursements. She has reports available to see upon request.

New Business: Bill & Barb Carey want to remind everyone of the Renaissance Faire happening and a sale of petrified wood at their home; proceeds will go to local adoption agencies.

There was inquiry by President Brent Stewart for the replacement of Jim Clinton for the Building fund chairman, Jim is having to step down due to his work schedule changing. Dick Corbett has graciously volunteered to take over for Jim. Dick will probably be soliciting for slabs or other materials for this auction in the near future, so be aware.

Rick Corbett invited everyone to share a piece of birthday cake for his dad, Dick. Club members and guests sang "Happy Birthday" and wished Dick well. Break was called at 8:26pm.

The Program after the break was presented by Ben Nunez. The subject "Trilobites" is one very close to Ben's heart; Ben had some awesome specimens for everyone to see.

The meeting was adjourned at 9pm.

*Respectfully submitted,  
Melodee Worley  
Secretary*

## MINUTES OF THE IDAHO GEM CLUB Board Meeting June 5, 2012

President Brent Stewart called the meeting to order at 7:34pm.

Board members present: Willa Renken, Phil Neuhoft, Jim Clinton, Ed Moser, Phil Worley, and Rick Corbett.

Officers present: Charles McCreath, Kathy Griffin, and Melodee Worley.

Motion to accepted minutes as printed in the "Grindings" by Willa Renken and seconded by Jim Clinton.

Secretary report: mail was received and a request for General and Board Meeting notes per Charter guidelines. I also received a new Rock & Gem magazine for the Library.

Treasurer's report: Kathy spoke of balances and disbursements.

(continued on page 3)

(Board Minutes continued from page 2)

Federation report: Charles McCreath is back from the Federations Annual Meeting. He has passed along copies of the NFMS 72nd Annual report, NFMS 2011-2012 rosters for the states of AK, ID, MT, OR, UT, WA, and a magazine called the "Range". He's also passed along some flyers for upcoming Rock Shows and/or Sales. Charles stated he passed along names of members who told him they hadn't gotten their NFMS Newsletters. He spoke of the next Annual Meeting in 2013, which will be August 16-18 in Butte, MT.

In Oregon there are some new Beach Agate collection news: (1) There may be a permit required for future collecting; (2) Allowing 1 gallon per person, per day; (3) Some areas are also being closed due to over collection of Agates; (4) check with the appropriate agencies before traveling to collection areas.

Charles and Ed want to remind members to save those stamps, these are sold and proceeds are donated for Cancer Research.

The program planned for our General Meeting on 19 June will be an auction; anyone wanting to donate specimens for the auctions please bring them that evening. Keep in mind July and August meeting will be at the Old Timers Shelter, in Ann Morrison Park at 6:30 pm. We will have a potluck supper and auction afterwards; it's suggested you bring a hot or cold dish to share and you must bring your own plates and utensils. Drinks and ice cream are provided by the club.

Workshop report: there will be another workshop on June 21st from 6:30pm to 9:30pm. Cleanup starts at 9pm and anyone using equipment is asked to stay and help with cleanup. Keep in mind this is the club equipment and that Doug and Willa have graciously allowed us to use part of their shop for our gatherings, so let's help whenever we are there.

Juniors report: The fieldtrip was cancelled due to weather; Ed will keep us informed about rescheduling in the future. A collection of specimens for the juniors was returned to Ed from the NFMS to have access to in the Library; this was a collection the Rock Rattlers had put together for a display at a federation show in recent years.

Wow! Forty items for the AFMS Endowment Fund drawing this year!!!! For a list of prizes and more information about the Endowment Fund go to: [www.amfed.org/endow2012.htm](http://www.amfed.org/endow2012.htm)

Ed still has four raffle tickets available for prizes to be drawn for at the end of July. Contact Ed for additional information.

Four new members' applications were approved, a motion to accept by Phil Neuhooff and seconded by Ed Moser. One application for membership was denied,  
(continued at top of next column)

a motion to accept this decision was made by Rick Corbett and seconded by Ed Moser.

The meeting was adjourned at 8:35pm.

*Respectfully submitted,  
Melodee Worley  
Secretary*

### The Great 2012 Grab Bag Sew Off

Well folks, it is once again necessary to ask for another stock pile of grab bags. Our last competition netted us about 8,000 bags which kept us in bags for about eight years. The 2012 competition will be no less exciting.

We are tempting you with some really fine prizes for those who can sew the most grab bags. The last winner sewed about 1500 bags to walk away with a sweet Willow Creek Sphere. This year's winners will reap just as nice a prize as the last, not to mention the fact that we have sweetened the pot by adding a runner up prize as well.

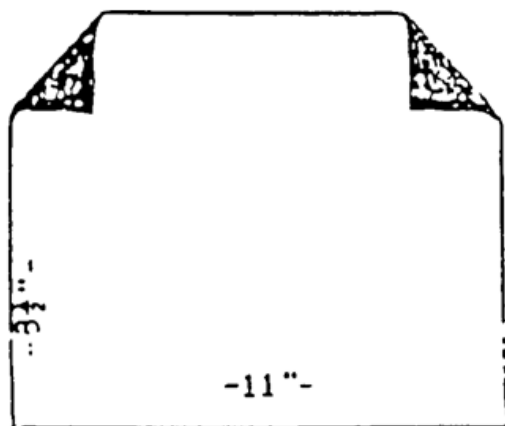
If you are willing to sew but don't have enough fabric just let me know and I will see that you get all you can cut out to put together. That being said if anyone has extra material please "donate" to a good cause. This is a great way to give back to the public especially the kids as there is no greater moment than to see their smiling faces as they go through their rocks at each show.

At the September General Meeting we will have on display the prizes you will be vying for. So break-out those sewing machines, scissors, & thread and let's make this an event to top them all. We as a Board appreciate everything our club members do to support our organization and we know this will be just as fantastic and fun as our entire fund raisers have been.

Thank you in advance for your continued support and may the best seamstress or seamster rise to the occasion!!!! (see page 4 for a grab bag pattern)  
Willa Renken

## Easy Grab Bags for Grab Bag Contest

The easiest method of cutting out grab bags is to cut fabric into 8 ½" strips. Press down ½" on the top edge of each strip. Fold strip in half and cut on fold (you'll have two 22 1/2 inch pieces. Cut each of those halves into two pieces (fold & cut on fold). Following the pattern, fold up the outer edges of the top hem and make the dog ears, and then place your drawstring under the hem (but over the "ears"). (I place a few pins in the edge of the hem to make sure it stays put before I sew. And, I sew each seam factory-style/chain stitching—not cutting between each bag, etc. So, if I cut out the 4 strips from the yard of fabric, I'm going to stitch down the top hem on all the bags before I go to the next step, etc.

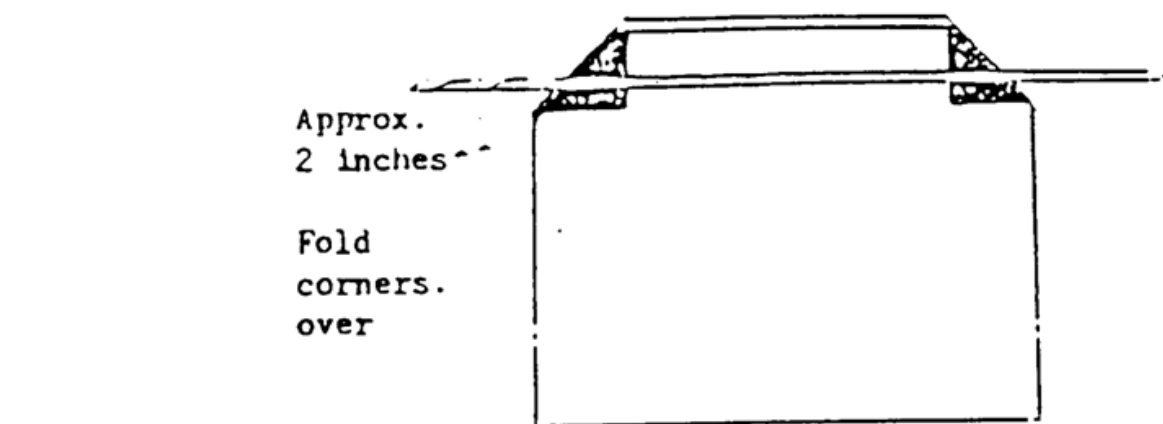


Time is saved by folding the two corners over diagonally, then folding The top down over the cord. Try it.

Fold over 1/2inch and crease. Lay cord in place.

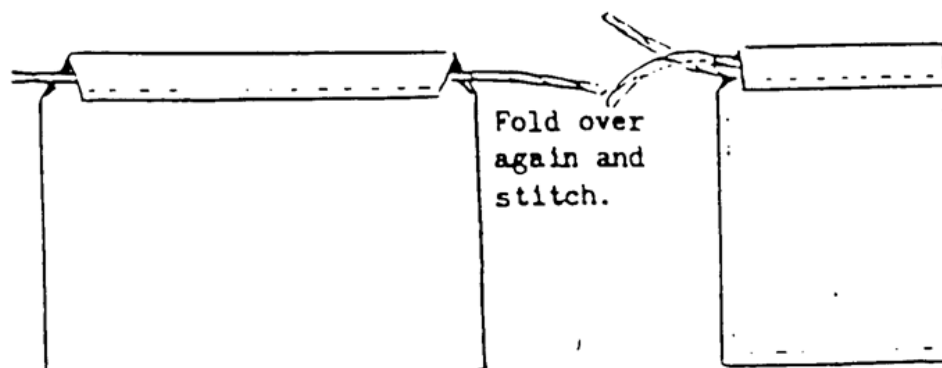
Approx.  
2 inches

Fold  
corners.  
over



Fold over  
again and  
stitch.

Fold in half. Stitch in across bottom and up side.



## Jewelry Tips

### DRAGON'S BREATH

Here be dragons. And then here be the steam machine of the Dragon's Breath. If you like small working steam engines, you'll be impressed by this one created by Hans Meevis from Saint Martin. It's made entirely from silver, gold and hand carved gemstones. Runs on steam or compressed air.

<http://ganoksin.com/blog/meevis/2012/04/08/dragons-breath/>





## Geologic Origins of Snakeskin Agates at Rome, Oregon

Philip S. Neuhoff, Ph.D.

The curious silica nodules known as snakeskin agates that are found near Rome, Oregon have long been a favorite of rockhounds. These translucent white agates with reticulated, opaque white surfaces are readily found in certain layers of sediment south of Rome. While lacking color patterns and other features typically appreciated by agate aficionados, they will take a good polish and make interesting additions to any collection. Their origins are perhaps even more interesting.



The snakeskin agates are found in a group of Miocene (5.3 - 23 million years old) sedimentary beds commonly known as the "Rome Beds". The Rome Beds consist of a 100 m thick series of alluvial (stream or river deposited) and lacustrine (lake bed) sediments ranging from coarse-grained conglomerates through fine-grained mudstones and volcanic tuffs. The sediments in these beds contain abundant volcanic-derived material that served as a main source for elements in the minerals found there. The beds are relatively flat-lying and rest on top of an erosional boundary that separates them from the underlying (older) Miocene sediments and volcanic rocks and are themselves overlain by younger volcanics and sediments.

The Rome beds have long been the focus of exploration for saleable mineral commodities. Significant dimension stone was quarried from these beds prior to 1960, but further utilization of this resource is unlikely due to the presence of erionite in the dimension stone (see note at end of article). The beds have been explored extensively for zeolites. These hydrous aluminosilicate minerals have a wide range of uses as desiccants, feed supplements, and water treatment substrates among others. To date

(continued from previous column)

only a small tonnage of ore bearing the zeolite mordenite has been mined, again largely due to the presence of erionite (also a zeolite). Other zeolites occurring in the deposit include chabazite, phillipsite, and clinoptilolite. The zeolites and other constituents (clays, quartz, feldspars, mica, calcite, fluorite) of the finer-grained Rome Beds are all microscopic and not of interest to mineral collectors.

The formation of zeolites and other secondary minerals in the Rome Beds resulted from interaction between the volcanic sediments and groundwaters. The minerals found in the Rome Beds (including the snakeskin agates, see below) are indicative of alteration of volcanic sediments in a very saline lake setting. Saline lakes (for instance the Great Salt Lake) form in closed basins in which surface waters feed into the lake but not out of the lake. Evaporation causes the dissolved mineral content of waters in the lake (and the groundwaters underneath the lake) to increase. When these very saline waters encounter volcanic sediments (which tend to react vigorously), sequences of minerals are formed reflecting changes from relatively fresh water near the margins of the lake to very saline waters at its center. This is seen at Rome where the margins of the lake are relatively unaltered, the center of the lake shows extensive formation of potassium feldspars, and in between form the zeolite beds that have been the focus of mineral exploration.

A common feature of saline lake systems with volcanic sediments is the precipitation of hydrous sodium silicate minerals. These minerals are generally not very stable and are usually only found in active saline lake systems (not fossil systems such as the Rome Beds). Among the most common of these is magadiite  $[\text{NaSi}_7\text{O}_{13}(\text{OH})_3 \cdot 4(\text{H}_2\text{O})]$ , named for the active saline Lake Magadi in Kenya where it was first found. Even within active lake systems, magadiite tends to break down, losing water and sodium and converting into relatively pure silica ( $\text{SiO}_2$ ). The resulting silica often retains to form of the pre-existing magadiite nodules, being

(Snakeskin—continued on page 9)

HAPPY



BIRTHDAY

**JUNE**

6/1 Nathan Nagy  
 6/3 Keith Chipman  
 6/4 June McConnell  
 6/5 Sherry Woodbury  
 6/6 Michiel Bugher  
 6/6 Angie Gomm  
 6/9 Ron Coolbaugh  
 6/11 Robert L. Turner  
 6/12 Teri Hetherington  
 6/14 Darlena Rowland  
 6/15 Sarah Neuhoﬀ  
 6/16 Chris Blickfeldt  
 6/17 Sandy Blodgett  
 6/18 Karla Glick  
 6/18 Ben Nunez  
 6/21 Laura Lindsay  
 6/24 Bill Carey  
 6/24 Ethan Chase  
 6/25 Barbara Davenport  
 6/30 Jonathan Barnett

*June Birthstones*

Faceted — Alexandrite  
 Cabochon — Moonstone  
 Traditional — Pearl

**JULY**

7/1 Mike Jones  
 7/1 Paula Lane  
 7/2 Wayne Snowball  
 7/5 Andrea Kinnaird  
 7/10 Renee Carpenter  
 7/10 Lonnie Hicks  
 7/12 Debra Burns  
 7/12 Loren Francis  
 7/13 Anna Gomm  
 7/15 Gordon Roberts  
 7/17 Jennifer Wilson  
 7/18 Kathy Griffin  
 7/20 Pat Bethel  
 7/20 Lynne Davis  
 7/22 Tom Rogers  
 7/24 Amy Hinkler  
 7/24 Keith Lenzner  
 7/24 Maxine Smith  
 7/25 David Douglas  
 7/26 Larry Ridley  
 7/28 Philena Thompson  
 7/29 Catherine Parsons  
 7/30 Debbie Housh

*July Birthstones*

Faceted — Ruby  
 Cabochon — Carnelian

Active rockhound Ron Coolbaugh is turning 95 on Saturday 9th. Shows what active rockhounding can do for us.  
 Happy Birthday Ron.

**June Program**

The program this month will be an auction. Please donate lapidary rough, specimens, equipment or finished pieces for the auction and come prepare to get those special pieces you need. We will also be having auctions the next two months at the picnics, so start gathering items to donate!

**Save Stamps For Cancer Research**

Cut at least 1/4 inch margin around the stamps. You can turn them into Chuck McCreath at our next meeting. **THANK YOU!**

**Dates To Remember****GENERAL MEETING**

3rd. Tuesday of every month  
 June 19, 2012

Church of the Brethren  
 2823 N. Cole Road, Boise, Idaho  
 Meeting Starts at 7:30 p.m.

**BOARD MEETING:**

1st. Tuesday of every month  
 July 3, 2012

Church of the Brethren  
 2823 N. Cole Road, Boise, Idaho  
 Meeting Starts at 7:30 p.m.

**June Refreshment Committee**

**Chair: Brent Stewart**  
**863-9336**  
**Kathy Griffin**  
**467-9286**  
**Rick Bidwell**  
**629-6291**

**REFRESHMENT COMMITTEE GUIDELINES**

Need approximately 15 dozen cookies. Wrapped door prizes are also needed. Arrive early enough to set up the chairs. The chairperson brings the coffee urn, coffee, punch, cream, sugar, cups and napkins. Afterward, put meeting tables & chairs away, clean kitchen and sweep the room. Gather and take all the trash with you. Don't forget it is the responsibility of the chair for the coming month to pick up the coffeepot, take it home and bring it the next meeting.

**July Refreshment Committee**

We need refreshment committee volunteers for July and August! Please email (pneuhoﬀ@yahoo.com) or call (352-514-0714) Phil Neuhoﬀ if you can help. For July and August, the refreshment committee is in charge of setting up and cleaning up for the picnics and supplying door prizes.

## ADVENTURES IN GEOLOGY (for kids)

*a Geo-Science Educational Program*

A 4-day, intensive, 5-hour per day  
program of geology exploration and  
learning for physically active boys and girls  
4<sup>th</sup> through 12<sup>th</sup> grades

Study area is the Old Penitentiary Historic Dis-  
trict hillside around Castle Rock

To be held at *The Idaho Museum of Mining and  
Geology*

2455 Old Penitentiary Road  
Boise, Idaho 83612

Grades 4 – 6

2 sessions: June 4-7

Aug 6-9

Grades 7 – 12

1 session: July 16-19

for registration and information,  
call Lois McDonald (208) 713-2061  
or contact at  
[Loismcdonald2008@live.com](mailto:Loismcdonald2008@live.com)



**Rocky Rattlers**  
Juniors need to bring their folders  
to the meeting this month

## YESTER YEAR

April 1968

Quincy Howell suggested workshop meetings on the identification of petrified wood. Twenty three showed interest in the project. The field trip will be to Grassy Mountain. A brochure about a commercial opal diggings at Spencer, Id. was received. Bill Blake of Burns, Oregon offered to take the club to his recent find of wood casts in the Stinking Water Mountains.

The fairgrounds offered to partition off the building and rent us any area that we want. If we need heat they will rent us units for \$40 a day.

The show at the Fairgrounds will be Mar. 29<sup>th</sup> and 30<sup>th</sup>. George Fields said we needed 80 display cases, that would be 30 more than we have at this time.

Bill Blake showed his recent find of limb casts, a field trip was to be organized.

The building at the fairground will cost \$100 a day. We could get in at noon Friday to set up at no cost. No admission would be charged, rock bags and a rock fishing booth was set to bring in money, also there would be rocks for sale. Only five Dealers were to be there. Clarence Byant reported that the deposits of wood casts near Burns were plentiful. A trip to Love Lake was reported on and it was not a good trip to take in the summer. The next field trip will be to the Greenhorn Mountains for wood.

*In Loving Memory*  
*Patsy Bethel - Historian*

Two links for additional newsletters we  
receive as members of the rock club.

[http://www.amfed.org/afms\\_news.htm](http://www.amfed.org/afms_news.htm)

<http://www.amfed.org/nfms/>

## Welcome New Members

**Larry & Carla Arnold**  
**2284 S. Ridge Point Way**  
**Boise, Idaho 83712-8519**  
**208-867-6727**

**Eric L. Bale**  
**3112 S. Heritage Ave.**  
**Boise, Idaho, 83709-3725**  
**208-794-1220**

**Gary & Patricia Dailey**  
**10771 W. Seneca Dr.**  
**Boise, Idaho 83709-3942**  
**208-862-1827**

**Terry L. Dotson**  
**920 Cove Arm Cir.**  
**Nampa, Idaho 83651-2288**  
**208-713-0988**

**Carey O'Neil**  
**408 E. 47th #5**  
**Garden City, Idaho 83714-4783**  
**208-440-3000**

### THE GRINDINGS

is the monthly newsletter of the Idaho Gem Club, Inc., associated with the Northwest Federation of Mineralogical Societies. Permission to copy is freely granted when proper credit is given to both the publication and the author. Articles without bylines are written by the Editor or President.

CHECK OUT THE CLUB WEBSITE!

[www.idahogemclub.com](http://www.idahogemclub.com)



## 2012 Idaho Gem Club Scholarship Forms Now Available!

The 2012 scholarship application form and instructions are now posted on the club website

(<http://www.idahogemclub.com>).

Deadline for applications is September 30, 2012. Please encourage any local earth science majors you know to apply!

## Rockhound "CODE OF ETHICS"

I will respect both private and public property and will do no collecting on privately owned land without permission from the owner.

I will keep informed on all laws, regulations or rules governing collecting on public lands and will observe them.

I will, to the best of my ability, ascertain the boundary lines of property on which I plan to collect.

I will use no firearms or blasting material in collecting areas.

I will cause no willful damage to property of any kind such as fences, signs, buildings, etc.

I will leave all gates as found.

I will build fires only in designated or safe places and will be certain they are completely extinguished before leaving the area.

I will discard no burning material - matches, cigarettes, etc.

I will fill all excavation holes which may be dangerous to livestock.

I will not contaminate wells, creeks, or other water supplies.

I will cause no willful damage to collecting material and will take home only what I can reasonably use.

I will practice conservation and undertake to utilize fully and well the materials I have collected and will recycle my surplus for the pleasure and benefit of others.

I will support the rockhound project H.E.L.P (Help Eliminate Litter Please) and will leave all collecting areas devoid of litter, regardless of how found.

I will cooperate with field trip leaders and those in designated authority in all collecting areas.

I will report to my club or Federation officer, Bureau of Land Management or other authorities, any deposit of petrified wood or other materials on public lands which should be protected for the enjoyment of future generations for public educational and scientific purposes.

I will appreciate and protect our heritage of natural resources.

I will observe the "Golden Rule", I will use Good Outdoor Manners and will at all times conduct myself in a manner which will add to the stature and Public Image of Rockhounds everywhere.





An invitation to card carrying Idaho Gem Club members.

As some of you know, Dorothy and I spend the summer and fall at our home in Colorado. That means I miss the club field trips in Idaho. But I still like to get out and collect preferably with company for safeties sake.

On that note:

If your travels should take you into the Four corners area of SW Colorado this summer and fall, I would be glad to guide you to some of the local collecting areas. There are many areas to collect. Rico, Telluride, La Plata Canyon, Cunningham Basin, and Silverton for a wide variety of Minerals. There are also fossil and petrified wood locales. Our property and the BLM land adjacent to it have a variety of marine fossils, calcite and aragonite crystals. We are directly across from Mesa Verde National Park in the lands of the ancestral Puebloan. There are some off the beaten path archeological sites that can be visited down Mc Elmo Canyon that we would be glad to share with you.

For questions and such:

My Email [ids918@aol.com](mailto:ids918@aol.com) My cell phone is a Boise number [208-861-3501](tel:208-861-3501)

The Colorado land line is [970-565-6787](tel:970-565-6787).

We will not be available from Mid-June to Mid-July. However we will check our Email on infrequent occasions during that time when access is available.

Thank you,

Jack (John D.) Stillinger



(Snakeskin—continued from page 5)

globular and having morphologies reflecting the desiccation and shrinking of the nodules such as interior cracks and a reticulated surface texture. These nodules are referred to in the geologic literature as "Magadi-type chert" as they tend to have a chert-like texture in Lake Magadi. Most Magadi-type chert I have seen is like this. The one exception are the snakeskin agates from Rome, which are clearly formed from desiccation of magadiite but are more agate-like in their texture. The presence of Magadi-type chert at Rome is further evidence of its past as a saline lake system.

### A Note About Erionite

Many of the beds at Rome contain the zeolite mineral erionite  $[(Na_2, K_2, Ca)_2 Al_4 Si_{14} O_{36} \cdot 15H_2O]$  at concentrations ranging from trace amounts to 100%. Erionite is a naturally-occurring fibrous zeolite mineral with no known uses. Numerous studies now point to erionite being a particularly carcinogenic mineral, being implicated in mesothelioma in a number of places (see article in October, 2011 Grindings). Health concerns associated with this mineral are similar to those posed by blue asbestos (perhaps I will write a future article on asbestos mineralogy...not all asbestos is carcinogenic). The beds containing the snakeskin agates are generally low in erionite, but unnecessary suspension of dust during collecting activities is not advised. Those concerned may consider bringing a dust mask to avoid breathing erionite particles that may be stirred up while collecting.

Upcoming Rock Sale

August 24th & 25th

New items that have come into my possession will be available, too. More info available later.

Joe Nielson  
8345 Stetson Dr.  
Boise, Idaho 83709  
208-869-6325

## Federation & Other Club News More Dates to Remember

### May Field Trip - Graveyard Point

The field trip to graveyard point was lots of fun and with many many buckets of Plume Agate, Red and Green Moss agate taken. I have a feeling that everyone had a great time, if not, blame Phil. The day started off cool, but warmed up nicely for a good dig. Great Job Everyone!! 20 Members, 6 Guest and 8 kids, very nice turnout.

### June 2nd 3rd—Beacon Hill

The clubs field trip to Beacon Hill was a great time for all, we had 25 members and 14 guest on day one and 18 members and 10 guest on day two...wow what fun I had, hope everyone else had just as much fun. I also took my fair share of geodes and nodules. Did You? I want to thank all who participated, for keeping our claim clean and safe for the next group of members. Well done.

**June 23 Rome (Snakeskin Agate)**  
8:00 am Meet @ ION gas station 5644 BUN-TROCK RD MARSING, ID 83639 West on Hwy 55 through Marsing to intersection @ Hwy 55 and Hwy 95.

8:30 am Travel to Rome, Oregon.

This trip requires a high clearance vehicle with good tires.

Bring the following tools: rock bags, rock hammer, shovel, small picks, hoe, rock scoop, spray bottle, and what ever else you usually bring .

*Happy Hounding*

*Phillip Worley - Field Trip Coordinator*

### Blacklight sale

Multiwave black light packages consisting of a Way Too Cool 4W multiwave (SW, MW, LW) lamp, magnetic extension pole, carrying case, and fluorescent mineral sample will be for sale again this month at the building fund table. Proceeds support our scholarship program!



### Other Clubs Field Trips

**June 16 Magic Valley Gem Club**  
Contact, Nv. & Rabbit Springs  
Meet: 9 am at General Store in Jackpot

**June 23 Owyhee Gem & Mineral Society**  
Succor Creek—Thunderegg

**June 13th—16th Tri-Federation to Vale area,**  
OR - Cancelled

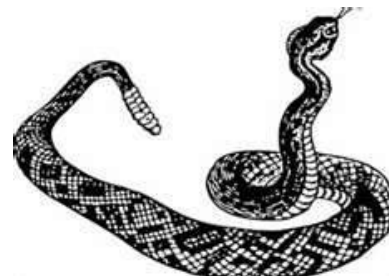
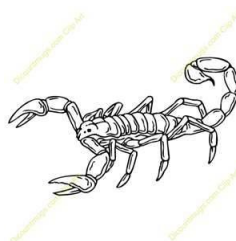
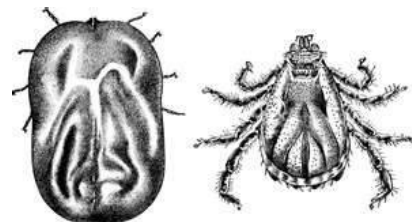
### NORTHWEST ROCKHOUND RETREAT

September 3rd thru 9th, 2012

<http://www.amfed.org/nfms/nwnews/May%202012.pdf>

### Watch out for these critters when you are rockhounding!

Female & male tick



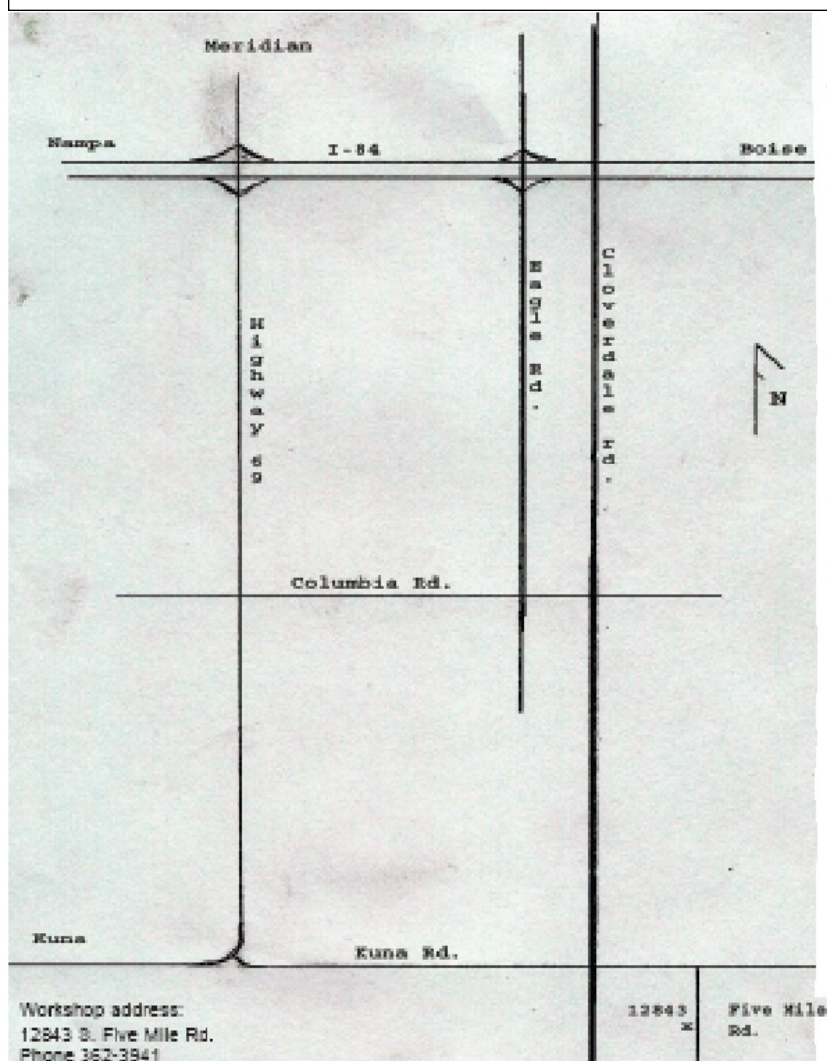
Are you ready to make a cab or two?

Remember these are for all members or guests. So be sure to bring that special person or child that you want to get interested in our hobby. We will begin on Thursday June 21st from 6:30pm to 9:30pm.

There will be a fire so if you want hotdogs and buns, please bring them, I will have the condiments. Supplies needed are hot-dogs, buns, and smores fixins; so come one come all to 12843 S Five Mile Rd.

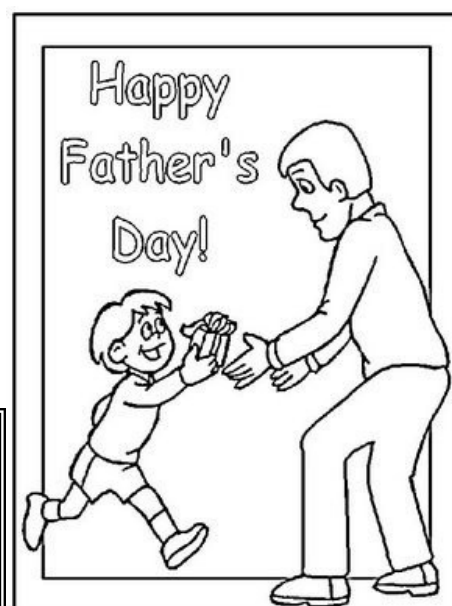
You will need to get here off of Meridian and Kuna Rd. or Cloverdale and Kuna Rd. as Five Mile dead ends and starts again.

Marge Conley will be here to help you with the wire wrapping and there will be instructors to help with the cab making.



If you have a slab to make your cab out of feel free to bring it, there will be some material there to choose from if you don't have any. For those of you who have extra material, the workshop always needs donations so that everyone who comes has something nice to cut and chose from. Remember there is a charge for the wire wrapping but the workshop is free. I look forward to seeing you all.

Willa Renken  
Workshop Chairman  
362-3941



### Tip for Cutting Thunder eggs

You can candle your thundereggs just as you can regular eggs. Punch a small hole in the bottom of a 2-pound can. Turn it upside down and place a light inside it. It is surprising how the light coming through the hole will show the dendrites and saves cutting time.

From *Rockhound Rambling* 7/10; via *Fred Greef, Washington Agate*; via *Rocky Review* 1997 *Rocky Trails*/5/12; *Golden Spike News*, 5/2012.



**The purpose of the Idaho Gem Club is to promote mutual, educational and scientific interests and benefits of its members in mineralogy, geology, gemology, the art of lapidary and kindred arts and sciences.**

**Dues:**

.....\$12.00 per person  
 .....\$15.00 per couple  
 .....\$17.50 per family

**Subscription:**

.....\$10.00 per year

**General Meeting:**

.....3rd. Tuesday of each  
 .....Month at 7:30 p.m.

USTICK	
<div data-bbox="805 235 928 285" data-label="Image"> </div> <p>Mountain View Church of the Brethren 2823 N. Cole Road</p>	COLE
NORTHVIEW	
FAIRVIEW	



**The Whangdoodle Bird**  
(Often seen on field trips)



**Idaho Gem Club, Inc.**

P.O. Box 8443  
 Boise, Idaho 83707-2443

*Happy  
Father's  
Day!*