

# Grindings

**Idaho Gem Club, Inc.**

P.O. Box 8443 ▼ Boise, Idaho 83707-2443

VOL 70 NO 2

February 2010



## BOARD OF DIRECTORS

**Jason Madsen**  
President  
378-4666

**Willa Renken**  
1st Vice President  
362-3941

**Brent Stewart**  
2nd Vice President  
331-1907

**RECORDING SECRETARY**  
Deana Ashton  
891-7273

**Phil Neuhoff**  
939-4508

**Ed Moser**  
340-8060

**Rick Corbett**  
383-9930

**Twila Gallaher**  
853-6703

**Dan Phillips**  
585-3019



**TREASURER**  
Kathy Griffin  
467-9286

**NFMS DIRECTOR**  
Charles McCreath  
344-5085

**EDITOR**  
Doug Renken  
362-3941  
WLR\_DKR@MSN.COM

**CLUB WEB SITE**  
www.idahogemclub.com

## President's Message

I want to take this opportunity to say thank you to resigning Officers, Board members, and Committee Chairs for their hard work and dedication. Also congratulations to the new Officers, Board members, and Committee Chairs.

Thank you to the Banquet Committee for their work! The January Banquet was a nice evening with good food and enjoyable company.

Our annual Gem, Mineral, Jewelry, & Fossil Show is scheduled for February 27th – 28th, 2010 at the Expo Idaho Fairgrounds. On February 25th we will need help at our storage facility (Lockaway Storage) to load trucks and trailers. If you have a truck or trailer we can use, please bring either or both. On February 26th starting at 8 am. we will start setting up for the Show at the fairgrounds. Tear down of the show will start at 5 pm. at the close of the Show on February 28th. Ed Moser will have a Kids Table this year, where there will be a variety of projects including the making of "rock critters" and "sea shell critters". He is looking for volunteers. Also there are many other tables that need volunteers so if you are able to help please sign up. There will be sign up sheets at the February meeting for set up, take down, and for helping at the various tables. This is a great opportunity to show off our club so please participate and spread the word.

There are still a few regular display cases and black light display cases up for grabs. This is a terrific way to show off your work and/or collections. Contact Twila Gallaher for applications.

Joe Nielson has done a fantastic job with getting the club a new t-shirt and sweat shirt design. If you are interested in them they can be purchased at the regular meetings and at the February Show.

Tony Griffin has a field trip schedule for 2010. There are a few months that are open to suggestions. If you have ideas or preferences for places to go please let Tony know.

The Gem License Plate is now available through the DOT. It is referred to as the "Earth Science and Lapidary Plate". The License Plate Committee has done a miraculous job getting the plate from its inception to completion. Some of the profits from the sale of the plate will fund education projects for kindergarten through 6th grade in earth science and lapidary studies. The plate honors our state's nickname "The Gem State" and features the Idaho star garnet, smokey quartz crystals, and a faceted gem.

*Jason Madsen*  
President

**MINUTES OF THE IDAHO GEM CLUB  
GENERAL MEETING ♦  
JANUARY 19, 2010**

Commencement of The Annual Banquet for the Idaho Gem Club at the Owyhee Plaza began at 6:00 pm. starting with cocktails and dinner at 7:00 pm. Members and guests were welcomed by host, Gene Stewart, along with introducing the head table. Present were Marge Conley, Dan Conley, Shirley and Chuck McCreath, Heather and Jason Madsen, and Alice Stewart.

Charles Osgood reported that the licensee plate is in production. There were over 100 people directly involved with over 300 people indirectly involved.

Gene Stewart introduced the Past Presidents. They were Patsy Bethel, Gene Stewart, Charles McCreath, Chris Blickfeldt, Willa Renken, Ron Ridenour, Marge Conley, Cathy Parsons, and Tony Griffin.

The Project of the Year award was presented to Jason Madsen for his cabochon embellished wood turned vase.

Brent Stewart presented the current president, Marge Conley, with a special gift.

The meeting was turned over to Marge Conley to conduct club business.

Treasure's report – Kathy Griffin reported on the balances and disbursements.

A motion was made by Ed Moser to accept the minutes as printed in the "Grindings". Ron Dingley seconded the motion and the motion was carried.

Secretary's report – No report.

Federation report – Chuck McCreath reported that the Federation report is in the "Grindings".

**Committee Reports**

Junior's report – Ed Moser recognized Shirley and Chuck McCreath for donating t-shirts for the youth.

**PAGE 2**

Show – Doug Renken recognized Mike Jones and Laura Lindsay for leading the Grab Bag Party. Help will be needed to load up for the show on February 25 at the storage unit and February 26 at Expo Idaho. There are opportunities to sign up to help with different events for the show. Twila Gallaher has applications for displays for the show.

Building Fund – Joe Nielson discussed t-shirt and sweat shirt sales at the show.

Gene Stewart lead a moment of silence for members who passed away in 2009. They were Elaine Weeks, Mabe Taylor, and Harold Robertson.

Marge Conley reflected on the past year and thanked everyone for their support.

Gene Stewart recognized Life Members; Roy and Patsy Bethel, Chris and Peggy Blickfeldt, Charles and Shirley McCreath, Charles and Helen Smith, Eugene and Alice Stewart, Marge Conley, Gary & Marion Phillips, Clarence and Betty Trebilcock, Mettie Clay, and Al and Hilda Larson. Also new Life Member Lynne Davis was recognized.

Gene Stewart presided over the installation on the new Officers and Board of Directors for 2009. They are President Jason Madsen, 1st Vice President Willa Renken, 2nd Vice President Brent Stewart, Secretary Deana Ashton, Treasurer Kathy Griffin, Federation Director Charles McCreath, Librarian Valorie Estabrook, and Historian Patsy Bethel. Board of Directors; Jason Madsen, Willa Renken, Brent Stewart, Deana Ashton, Phil Neuhoff, Twila Gallaher, Ed Moser, Rick Corbett, and Dan Phillips.

A special thanks was given to Jim Da Silva and the Banquet committee for their excellent work.

Gene Stewart passed on the President's Opal and Jade gavel to Jason Madsen, President for 2010. With words of acceptance Jason adjourned the meeting.

*Respectfully submitted,  
Jason Madsen  
Secretary*

**MINUTES OF THE IDAHO GEM CLUB  
BOARD MEETING ♦  
FEBRUARY 2, 2010**

Jason Madsen presided over an unofficial meeting as only four Boards Members were present. The meeting was called to order at 7:35 pm.

Board members and officers present were Kathy Griffin, Rick Corbett, Twila Gallaher, Chuck McCreath, Ed Moser, and Jason Madsen. Willa Renken and Brent Stewart were excused.

Guests present were Shirley McCreath, Mike Jones, Laura Lindsay, Charles Osgood, and Marge Conley.

Secretary's report – No report.

Treasurer's report – Kathy Griffin discussed balances and disbursements.

Federation report – Chuck McCreath reported that there will be a Federation convention April 17 to 19. There will be a retreat with workshops to the Blue Forest, Wyoming area Memorial Day weekend.

**Committee Reports**

Field Trip – Rick Corbett reported on the proposed field trip schedule for 2010. Tony Griffin is open to suggestions for field trips.

Juniors – Ed Moser reported that there will be a "Kids Table" at the show. He is looking for volunteers to help. The Kid's Quiz in the "Rock and Gem" issue is on page 42.

Show – Mike Jones and Laura Lindsay reported that the club has 700 to 800 grab bags for the show. They are asking for more polished rocks to stuff bags. Twila Gallaher reported that there are 50 plus display cases spoken for with 18 or so still up for grabs. There are ten black light display cases spoken for with ten still up for grabs. Marge Conley reminded chairs to let her know who their show helpers are so she can get name tags made up for them.

Building Fund - Chuck McCreath reported on behalf of Joe Nielson that there will be a t-shirt and sweat shirt display at the main entrance of the show.

License Plate – Charles Osgood reported on the License plate. There was some discussion on advertising and promoting the sales of the plate.

Picnic – Marge Conley reported that the picnic site is reserved for July and August at the Old Timers Shelter in Ann Morrison Park.

The meeting was adjourned at 8:45.

*Respectfully submitted,  
Jason Madsen  
Acting Secretary*

## Gem Show 2010

The Annual show is upon us again. For the new members in the club this is the main fund raiser for the club. This is a club show and does require full club support. All who contribute will be allowed into the show for free. If you are a club member and do not want to contribute you will be required to pay admission.

Setup will begin on Thursday February 25th at 1:00 p.m. at Lockaway Storage 5246 Chinden Blvd. At that time we will unload as much of the storage unit as possible depending on available empty trucks. The tables will be loaded into the u-haul truck. Then all other show equipment (electrical, lights, cases, case fronts, silent auction rock) will be loaded into empty trucks. The more we can load on Thursday the easier the setup will go on Friday. Then on Friday February 26th at 8:00 a.m. we will unload and setup all dealer tables and display cases. After these are setup the skirting will need to be placed around the tables. The black light tent will also need to be setup. The more help we have the easier it is during setup.

We have the ticket sales, silent auction, grab bags, wheel of fortune, garnet table, hospitality, and scholarship raffle as stations needing help. Shifts are in two hour increments so if possible please sign up for a couple of stations. There is a list of the committee chairs on page 11. Please contact them if you have not already signed up.

There is also 72 display cases that need to be filled contact Twila Gallaher 853-6703 to reserve your display case. The black light room also needs to be filled this year. There is room for 20 Black Light cases. This is one part of the show people look forward to seeing each year lets do our best to fill these cases. Cases can be setup until 8:00 p.m. on Friday night during setup. After that everyone is required to leave.

I need a list from the committee chairs of who is working so I can reserve parking passes for those people. We also need this list so Marge Conley can make name tags. This is a large job so all help in providing names would be greatly appreciated.

After the show closes at 5:00 p.m. on Sunday March 1st the tear down begins. Again we will need as many people helping as possible. All of the equipment that was taken out of the storage unit will need to go back at this time. The last few years we have been done by 8:30 p.m. after a long weekend most everyone is very tired, so all help at this time would be greatly appreciated.

I look forward to seeing everyone at the show.

*Doug Renken*  
Assistant Show Chairman

## Upcoming Shows

### **ANNUAL GEM, MINERAL, JEWELRY & FOSSIL SHOW 2010**

**February 27th 10am - 7pm**

**February 28th 10am - 5pm**

**Expo Idaho**

**Glenwood & Chinden**

### **Owyhee Gem & Mineral Society**

**March 2010**

**6th 10am - 6pm**

**7th 10am - 5pm**

**O'Conner Field House**

**2200 Blaine Caldwell, Idaho**

### **Magic Valley Gem Club Show**

**March 2010**

**13th 9am - 6pm**

**14th 9am - 5pm**

**Twin Falls County Fairgrounds (New Location!)**

**Admission \$2.00**

## ROCK'N FUNNIES



## Yesteryear December 1958

The Christmas Party started after the regular meeting. Leon Burt and his eight accordionists provided the music. Slides were shown of a recent trip to Germany and the Worlds Fair at Brussels. Cookies and candies were enjoyed along with coffee.

The board nominated Earl Alden as President for 1959.

The annual Banquet was held at the Carrie Gekelar Hall, Second Presbyterian Church. 98 members enjoyed Swiss steak. Five door prizes were awarded; a presentation on Amethyst was given by Judge Smith. The outgoing President was given an engraved rock hammer.

It was decided to get name tags for the members and also tags were mentioned for the visitors.

The club appointed a committee to look into a building they could buy for the use of members.

The March field trip was to the Whangdoodle claim and assessment work was done. April field trip was to be to the Amethyestine mine at Bruneau. A 3 day field trip to Emerald Creek was planned for the 4th of July.

For the program in April 18 of the ladies modeled the latest in fashion for the lady rock-hound. Mrs. Alden described the costumes in detail.

Bruneau canyon was scheduled for mid May and also a trip to the Morrisonite claim for Decoration Day weekend.

Location for the June field trip were discussed whether to go to Beacon Hill or to Love Lake, near Huntington. (Beacon Hill won out. I don't think they could find Love Lake)

*Patsy Bethel  
Historian*

# ***DUES ARE NOW PAST DUE.***

*Rates are as follows:*

***\$12.00 per person  
\$15.00 per couple  
\$17.50 per family***

***Dues are due by October 31 each year .  
Please pay at the next meeting or send  
them to***

***Kathy Griffin, Treasurer  
P.O. box 8443  
Boise, ID 83707-2443***

# HAPPY BIRTHDAY



## FEBRUARY

2/1 Maria Snyder  
 2/1 Charles Osgood  
 2/5 Skeeter Eversberg  
 2/5 John Montgomery  
 2/5 Joyce Hackwell  
 2/9 Dylan Habersetzer  
 2/10/39 The Idaho Gem Club  
 2/10 Kim Williams  
 2/10 Sharon Barnes  
 2/10 Hailey Madsen  
 2/11 Rick Corbett  
 2/11 Jim Storey  
 2/12 William E. Crider  
 2/13 Terry Potter  
 2/13 Deb Wirt  
 2/16 Kylee Madsen  
 2/16 Shawn Blades  
 2/17 Kevin Watson  
 2/18 Molly Cole  
 2/19 Patsy Beck  
 2/20 Jackson Neuhoff  
 2/20 Sara Cole  
 2/23 Jim Clinton  
 2/25 Deanna Moser  
 2/26 David Dieball  
 2/26 Rodney Sharp  
 2/28 Veva Jencks

**February Birthstones**  
**Faceted — Amethyst**  
**Cabochon — Onyx**

## MARCH

3/1 Tristen Griswold  
 3/2 Heide Finnegan  
 3/3 Pat Cantwell  
 3/5 Gene Alvey  
 3/5 Katy Griswold  
 3/5 Debbie Kennedy  
 3/6 Jean Dingley  
 3/6 Jason Madsen  
 3/7 Ronald Dingley  
 3/7 Judy Blodgett  
 3/10 Ron Harrison  
 3/18 Roger Nelson  
 3/18 Vicki Bickford  
 3/20 Robert Dewey  
 3/22 Joshua Jackson  
 3/23 Judy Lee  
 3/24 Victoria Kowalski  
 3/28 Larry Friend  
 3/30 Diana Harshman  
 3/30 Heather Madsen  
 3/31 John Meyer  
 3/31 Bonnie Sue Cooper

**March Birthstones**  
**Faceted - Aquamarine**  
**Cabochon - Bloodstone**

## DATES TO REMEMBER

**GENERAL MEETING:**  
**3rd. Tuesday of every month**  
 February 16, 2010  
 Church of the Brethren  
 2823 N. Cole Road, Boise, Idaho  
 Meeting Starts at 7:30 pm.

**BOARD MEETING:**  
**1st. Tuesday of every month**  
 March 2, 2010  
 Church of the Brethren  
 2823 N. Cole Road, Boise, Idaho  
 Meeting Starts at 7:30 pm.

## February Refreshment Committee

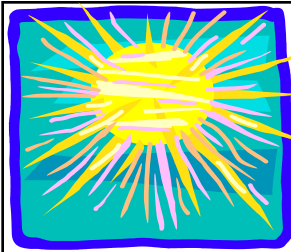
Chair: Becky Gibson 383-0040  
 Rick Corbett 383-9930  
 Ben Bowlden 713-6995  
 Sharon Allen 908-2875

### REFRESHMENT COMMITTEE GUIDELINES

Need approximately 15 dozen cookies. Wrapped door prizes are also needed. Arrive early enough to set up the chairs. The chairperson brings the coffee urn, coffee, punch, cream, sugar, cups and napkins. Afterward, put meeting tables & chairs away, clean kitchen and sweep the room. Gather and take all the trash with you. Don't forget it is the responsibility of the chair for the coming month to pick up the coffeepot, take it home and bring it the next meeting.

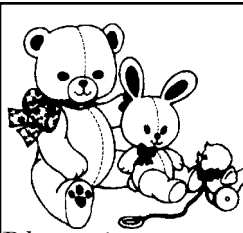
## March Refreshment Committee

Chair: Arlene Bailey 562-8030  
 Randy Lee 870-1005  
 Heather Madsen 378-4666  
 Valerie Estabrook 859-1233



## Sunshine Lady

Arlene Bailey is the club sunshine lady. Her job is to send some cheer to members who are ill or just need some cheering up. But she needs your help in doing this job. If you know of someone who has been recently ill let her know so she can send them a card. Her phone number is 562-8030. Thank you in advance for your help.



*Remember to collect and bring Teddy Bears to the meetings for our public service project. The bears and other stuffed animals are given to emergency personnel to give to the children at the scene of emergencies.*

*Please give your animals to Debbie Knudsen or Skeeter Eversburg. **THANK YOU!***

## Juniors Report

The Jr Rattlers will meet with the General membership meeting and will go to the classroom after the door prize drawing.

The Youth that have not received some of the material that has been donated in 2009 will receive it on the meeting night.

There will be a kids craft table at the Gem Show. Ed will need help working with the youth during the show. Give him a call if you can assist.

The Rock & Gem youth quiz is on Page 42 of the February issue.

*Ed Maser  
Cell 340-8060  
Juniors Chair*

## Proposed 2010 Field Trip list for the Idaho Gem Club

March 20th Queenstone/Whang Doodle IGC claims jasper & opal

April 24th open

May 22nd Haystack Butte Jasper - near Adrian, Or.

May 29 - 31 Tri Fed Field Trip - Blue Forest, Wyoming

June 19th open

July 24th Graveyard Point - IGC claim plume agate, moss agate

Aug 21st some place in the mountains? need some place cooler to go

Sept 25th Carey moss agate- Carey, Idaho

Oct 23rd open

Nov 20th open - will probably be moist so something close.

Beacon Hill when roads dry out - Doug will let us know when we can get in there.

Sunstone claim when it is not so hot or cold Hooker Creek for petrified wood and Mahogany Mtns for jasper

Need ideas for other places to go!

I won't lead a group to Dismal Swamp!

*Tony Griffin  
Field Trip Chairman  
467-9286 home phone  
250-3857 cell phone.  
Email: [tonygriffin@heritagewifi.com](mailto:tonygriffin@heritagewifi.com)*

## REMEMBERING DAISY . . .

by Ron and Camille Ridgenour



This picture of Ron and Daisy after a successful, but exhausting trip into the field, shows how much Daisy enjoyed being with us and riding in her favorite spot. She would never sleep on the way home for fear of missing “something”. This trip she dug and dug and found a bone of something but it was very special so we brought it home. She would dig right next to us—it was so cute.

One trip we went over to Reynolds Creek and Camille had taken Daisy on her leash around the “mountain” and of course

got disoriented. And then a snow squall came. Camille was really scared because she lost sight of everyone. So she told Daisy to “go find Daddy.” Daisy weaved in and out of bushes and holes and led Camille to where the van was parked. She was just amazing.

Daisy joined the IGC the same year we did, 1999, and had many special friends. She always liked it when Pat and Marge Conley came by; and she loved to be out in the rocks hunting with Karol and George Cawthon. Whenever Sue and Richard Clark stopped by, they came loaded with treats. She liked Kevin and Amy and Jeremy Watson; and Robin Solt and Lynne Davis—and many others unnamed.

Daisy was born in Vale, Oregon at one of those awful puppy breeder places—Camille didn’t know that until she got there to get her. It was awful. She was only 4 weeks old—they said she was 8 but the vet said “oh, no.” And she had health problems, one being an insulin dependent severe diabetic the last 6 years. But it didn’t get in the way of her love for us or ours for her. She understood everything. Even when she went totally blind her last year, she would just walk touching us lightly and trusted us to keep her safe.

Daisy went into renal failure in November. We gave her B-12 infusions at home for almost two months, not wanting to let this precious gift go. Camille had a special relationship with her and told Daisy to let her know if she just couldn’t go on any longer.

On New Years Eve, we were getting ready to give her her infusion and Camille looked at Daisy and held her tightly, and she said Daisy had said “no more.” She never whimpered or cried, but she was just tired. Of course, it was the holiday and the vet was gone, but our granddaughter’s vet was going to be open on Saturday, January 2nd. We spent those few days staying close to Daisy—of course, she slept with us—and Saturday morning we made arrangements to take Daisy in. We held her together while the vet did her job in a very sensitive way and in just a few seconds we’re sure Daisy was with our granddaughter’s husband, Allen, who had died last year at a young age of 23. That gave us some comfort because Daisy never made a sound, and she loved Allen. The last look she gave us we could feel her gratitude for the wonderful life we had all shared.

We will miss her forever but will always feel her with us. We don’t know if many dog lovers get to experience that special relationship that comes along so seldom between man and best friend—but Daisy gave us her all and we are forever grateful for this part of our lives that we shared with her. It made rockhounding even more special because we shared it with Daisy.



## Fascinating Fact

Up to 100,000 tons of rock a year fall to earth from space. The largest meteorite in the world lies in the ground in Africa and weighs more than 60 tons.

The largest topaz crystal was found in Brazil in 1940. It weighs 596 pounds. It is on display in the American Museum of Natural History in New York.

### The Importance of Rocks and Minerals

Name	Type of Rock	Use
Basalt	Igneous	Used in road building materials
Calcite	Mineral	Used in cements and mortars and the production of lime
Granite	Igneous	Used for buildings, monuments, and tombstones
Marble	Metamorphic	Used in building, floors, tile in bathrooms
Obsidian	Igneous	Used in making arrowheads and knives
Pumice	Igneous	Used in scouring, scrubbing, and polishing materials
Quartz	Mineral	Used in making glass, electrical components, and optical lenses
Sandstone	Sedimentary	Used in the building industry for houses
Slate	Metamorphic	Used for roofs, chalkboards, and patio walks

## Orienting & Polishing Oregon Sunstone

by Merle Reinikka

Dichroism occurs in all colored Oregon sunstones to some extent.

**Reds:** To obtain the best color (and size, when possible), orienting to the most intense red shade is preferred.

**Greens:** Invariably dichroic, green on one axis and red or pinkish-orange on another. I recommend cutting the stone in a step cut, with steep ends—65 to 70 degrees—just as you would when cutting strongly dichroic tourmaline. The whole stone will be a pleasing green when viewed from the table; from the ends, the red is strongly evident. If cutting a standard round brilliant, put the red color zone in the culet. Otherwise the finished product will be as exciting as dead seaweed.

**Cleavage:** Oregon sunstones have two perfect cleavages. One is evident in the schiller that shows as aventurescence paralleling cleavage planes in some stones. This effect is caused by a concentration of copper platelets. Less evi-

dent—but of some importance when it comes to polishing—is the cleavage of the triclinic structure of the crystal itself. Cleavage planes do present problems in the final phase of polishing. One can avoid these situations by orienting 7 to 10 degrees off these known cleavage planes. But when all else fails, try reversing the direction of the polishing lap, or if available, use a wax lap at slow speed.

Cerium oxide, in all combinations of solution or lap make-up, is especially effective in polishing Oregon sunstones.

Linde A slurry is my alternative choice, on tin or Conan laps. Spectra (Linde A) or Ultra (cerium oxide) laps may also be useful, though always with the chance of rounded facet edges.

---excerpted from Facets, 12/04, via Rocky Trails 12/09

**FROM THE EDITOR**

The deadline for articles is the board meeting, if it needs to be typed. If the article is sent via e-mail the deadline is the Saturday after the board meeting.

**Phone: (208) 362-3941**  
**E-mail: WLR\_DKR@MSN.COM**  
**My mailing Address is:**  
**Doug Renken**  
**12843 S. Five Mile Rd.**  
**Kuna, ID 83634**

***Electronic Grindings***

Thanks to those who signed up for the electronic Grindings. Not only does this save the club money it helps save me time putting on labels and postage. Currently it costs around \$1.70 per issue or \$20.40 per year to print and mail each newsletter.

If you would like to receive the Grindings newsletter through e-mail let me know. Please send an e-mail to WLR\_DKR@msn.com and I will add you to our e-mail list. The Grindings will be sent in PDF format.

**SAVE STAMPS**

Just a note to remind people to save their postage stamps to donate to the Federation. The stamps are sold and the proceeds are donated to cancer research. Cut at least 1/4 inch margin around the stamps. You can turn them into Chuck McCreath at our next meeting. **THANK YOU!**

**"CODE OF ETHICS"**

I will respect both private and public property and will do no collecting on privately owned land without permission from the owner.

I will keep informed on all laws, regulations or rules governing collecting on public lands and will observe them.

I will, to the best of my ability, ascertain the boundary lines of property on which I plan to collect.

I will use no firearms or blasting material in collecting areas.

I will cause no willful damage to property of any kind such as fences, signs, buildings, etc.

I will leave all gates as found.

I will build fires only in designated or safe places and will be certain they are completely extinguished before leaving the area.

I will discard no burning material - matches, cigarettes, etc.

I will fill all excavation holes which may be dangerous to livestock.

I will not contaminate wells, creeks, or other water supplies.

I will cause no willful damage to collecting material and will take home only what I can reasonably use.

I will practice conservation and undertake to utilize fully and well the materials I have collected and will recycle my surplus for the pleasure and benefit of others.

I will support the rockhound project H.E.L.P (Help Eliminate Litter Please) and will leave all collecting areas devoid of litter, regardless of how found.

I will cooperate with field trip leaders and those in designated authority in all collecting areas.

I will report to my club or federation officer, Bureau of Land Management or other authorities, any deposit of petrified wood or other materials on public lands which should be protected for the enjoyment of future generations for public educational and scientific purposes.

I will appreciate and protect our heritage of natural resources.

I will observe the "Golden Rule", I will use Good Outdoor Manners and will at all times conduct myself in a manner which will add to the stature and Public Image of Rockhounds everywhere.

**THE GRINDINGS**

is the monthly newsletter of the Idaho Gem Club, Inc., associated with the Northwest Federation of Mineralogical Societies. Permission to copy is freely granted when proper credit is given to both the publication and the author. Articles without bylines are written by the Editor or President.

**CHECK OUT THE CLUB WEBSITE!**

[www.idahogemclub.com](http://www.idahogemclub.com)



## ***Display Case Application***

**Idaho Gem Club Annual Gem & Mineral Show**

**February 27 & 28 2010**

**Display Application**

Name: \_\_\_\_\_ Phone: \_\_\_\_\_

Address: \_\_\_\_\_

Club Affiliation: \_\_\_\_\_

Type of material and/or type or kind of display: \_\_\_\_\_

Number of cases: \_\_\_\_\_

Borrow a case \_\_\_\_\_ Will provide own case \_\_\_\_\_

Size of your case: \_\_\_\_\_

Inside Dimensions of club cases are 46.5" wide by 22.5" deep by 22.5" high

(Please note: Loaned cases do not have liners -- you need to bring your own.)

Show dates: Saturday, 27 February and Sunday, 28 February, 2010

Set-up: 3:00 P.M. Friday, 26 February, 2010

A maximum of 150 watts of lighting will be provided per case. Security is provided around the clock. However, no responsibility will be assumed by the Idaho Gem Club, Inc.

Application deadline is: Saturday, 20 February 2010

Mail application directly to: Twila Gallaher 208-853-6703 Or  
8143 W. Prince Dr. tkgboise@cableone.net  
Boise, ID 83714-2179

### ***2010 Show Chairs***

Show Chairman...Charlie Smith (208) 628-4002  
Asst. Show Chairman...Doug Renken 362-3941  
Show Setup Chairman...Kevin Watson 362-6413  
Ticket Sales Chairman... Robert and Debra Burns  
841-1081 or 841-1321  
Hospitality Chairman...Cathy Parsons 465-1646

Demonstration Chairman...Willa Renken 362-3941  
Black Light Room Chairman...Jim Witt 890-8035  
Wheel of Fortune ...Laura Lindsay 703-6133  
Grab Bag Chairman...Mike Jones 703-6133  
Garnet Table ...Mike & Sue Witschen 336-4556  
Silent Auction Chairman...Cheryl Link 375-5360  
Scholarship Chairman...Phil Neuhoff 939-4508  
Display Chairman....Twila Gallaher 853-6703  
Credentials Chairman...Marge Conley 375-8935

The purpose of the Idaho Gem Club is to promote mutual, educational and scientific interests and benefits of its members in mineralogy, geology, gemology, the art of lapidary and kindred arts and sciences.

**Dues:**

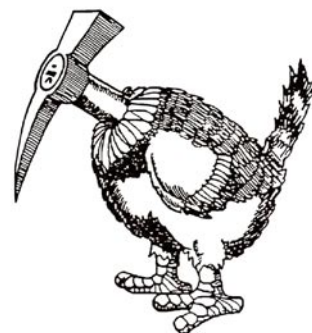
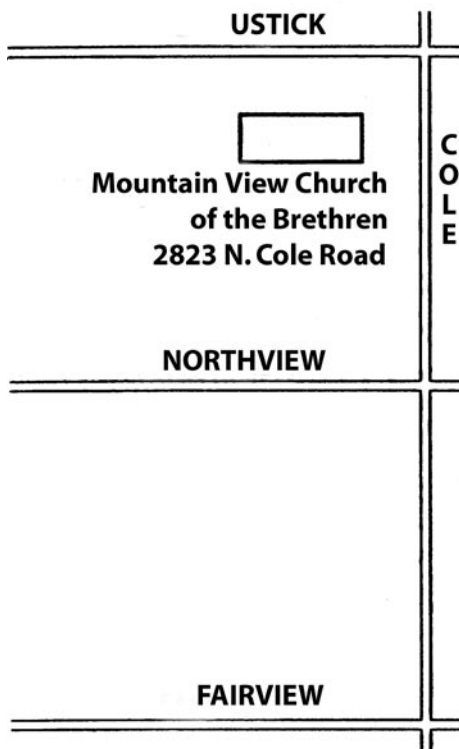
\$12.00 per person  
\$15.00 per couple  
\$17.50 per family

**Subscription:**

\$10.00 per year

**General Meeting:**

3rd. Tuesday of each  
Month at 7:30 p.m.



The Whangdoodle Bird  
(Often seen on field trips)



**Idaho Gem Club, Inc.**

P.O. Box 8443  
Boise, Idaho 83707-2443

Please note that if there is a red dot by your address label, the treasure's records indicate that your dues have not been paid. If this is incorrect contact Kathy Griffin. Otherwise this will be your last newsletter unless your dues are paid in full.